

Instrument Summary:

Instrument ID: iCAP Q
Serial Number: Undefined

Labbook Summary:

Path and filename: _Application Data\Workspace\LabBooks\wlw\20211012-1.imexp
Labbook created by: Administrator
Based on template:
Hardware configuration: iCAPQ1
Labbook type: eQuant
Qtegra version (last saved): 2.7.2425.154
Labbook started: 10/12/2021 2:49:54 PM
Labbook finished: 10/12/2021 4:47:52 PM

Method Summary:

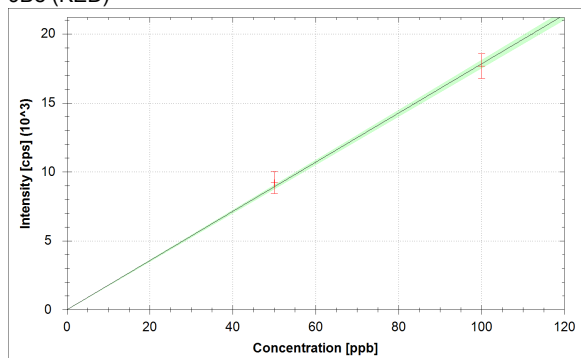
Isotope	Mode	Dwell time (s)	# of Channels	Spacing	Resolution	IS
6Li (KED)	KED	0.03	3	0.1	Normal	
9Be (KED)	KED	0.03	3	0.1	Normal	6Li (KED)
11B (KED)	KED	0.03	3	0.1	Normal	6Li (KED)
24Mg (KED)	KED	0.03	3	0.1	Normal	6Li (KED)
27Al (KED)	KED	0.03	3	0.1	Normal	45Sc (KED)
45Sc (KED)	KED	0.03	3	0.1	Normal	
51V (KED)	KED	0.03	3	0.1	Normal	45Sc (KED)
52Cr (KED)	KED	0.03	3	0.1	Normal	45Sc (KED)
55Mn (KED)	KED	0.03	3	0.1	Normal	45Sc (KED)
56Fe (KED)	KED	0.03	3	0.1	Normal	45Sc (KED)
58Ni (KED)	KED	0.03	3	0.1	Normal	45Sc (KED)
59Co (KED)	KED	0.03	3	0.1	Normal	45Sc (KED)
63Cu (KED)	KED	0.03	3	0.1	Normal	89Y (KED)
64Zn (KED)	KED	0.03	3	0.1	Normal	89Y (KED)
69Ga (KED)	KED	0.03	3	0.1	Normal	89Y (KED)
75As (KED)	KED	0.03	3	0.1	Normal	89Y (KED)
80Se (KED)	KED	0.03	3	0.1	Normal	89Y (KED)
85Rb (KED)	KED	0.03	3	0.1	Normal	89Y (KED)
88Sr (KED)	KED	0.03	3	0.1	Normal	89Y (KED)
89Y (KED)	KED	0.03	3	0.1	Normal	
107Ag (KED)	KED	0.03	3	0.1	Normal	115In (KED)
114Cd (KED)	KED	0.03	3	0.1	Normal	115In (KED)
115In (KED)	KED	0.03	3	0.1	Normal	
133Cs (KED)	KED	0.03	3	0.1	Normal	115In (KED)
138Ba (KED)	KED	0.03	3	0.1	Normal	159Tb (KED)
139La (KED)	KED	0.03	3	0.1	Normal	159Tb (KED)
140Ce (KED)	KED	0.03	3	0.1	Normal	159Tb (KED)
141Pr (KED)	KED	0.03	3	0.1	Normal	159Tb (KED)
142Nd (KED)	KED	0.03	3	0.1	Normal	159Tb (KED)
152Sm (KED)	KED	0.03	3	0.1	Normal	159Tb (KED)
153Eu (KED)	KED	0.03	3	0.1	Normal	159Tb (KED)
158Gd (KED)	KED	0.03	3	0.1	Normal	159Tb (KED)
159Tb (KED)	KED	0.03	3	0.1	Normal	
164Dy (KED)	KED	0.03	3	0.1	Normal	159Tb (KED)
166Er (KED)	KED	0.03	3	0.1	Normal	159Tb (KED)
169Tm (KED)	KED	0.03	3	0.1	Normal	159Tb (KED)
174Yb (KED)	KED	0.03	3	0.1	Normal	159Tb (KED)
175Lu (KED)	KED	0.03	3	0.1	Normal	159Tb (KED)
205Tl (KED)	KED	0.03	3	0.1	Normal	209Bi (KED)
208Pb (KED)	KED	0.03	3	0.1	Normal	209Bi (KED)
209Bi (KED)	KED	0.03	3	0.1	Normal	
232Th (KED)	KED	0.03	3	0.1	Normal	209Bi (KED)
238U (KED)	KED	0.03	3	0.1	Normal	209Bi (KED)

Isotope	Mode	Dwell time (s)	# of Channels	Spacing	Resolution
6Li (KED)	KED	0.03	3	0.1	Normal
45Sc (KED)	KED	0.03	3	0.1	Normal
89Y (KED)	KED	0.03	3	0.1	Normal
115In (KED)	KED	0.03	3	0.1	Normal
159Tb (KED)	KED	0.03	3	0.1	Normal
209Bi (KED)	KED	0.03	3	0.1	Normal

No. of sweeps	Time per sweep[s]	Time per main run[s]
10	3.87	38.7

Calibration Curves:

9Be (KED)



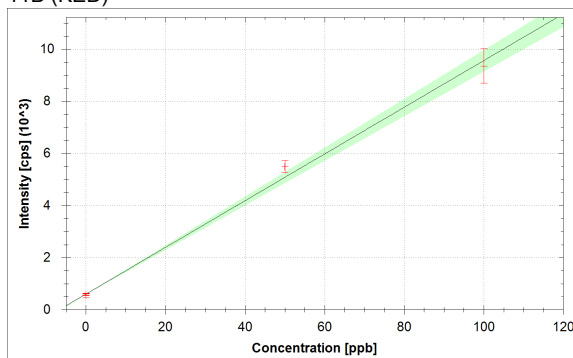
$$f(x) = 178.1816 \cdot x + 1.1057$$

$$R^2 = 0.9995$$

$$\text{BEC} = 0.006 \text{ ppb}$$

$$\text{LoD} = 0.0000 \text{ ppb}$$

11B (KED)



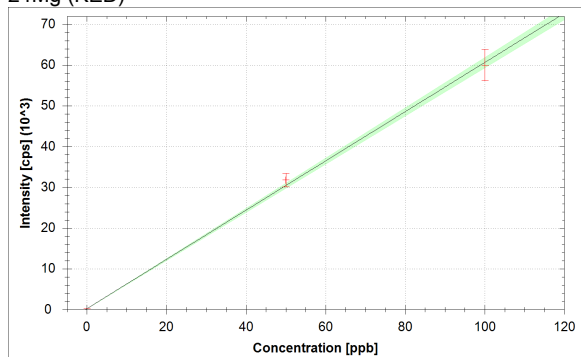
$$f(x) = 89.6828 \cdot x + 598.2650$$

$$R^2 = 0.9959$$

$$\text{BEC} = 6.671 \text{ ppb}$$

$$\text{LoD} = 2.6956 \text{ ppb}$$

24Mg (KED)



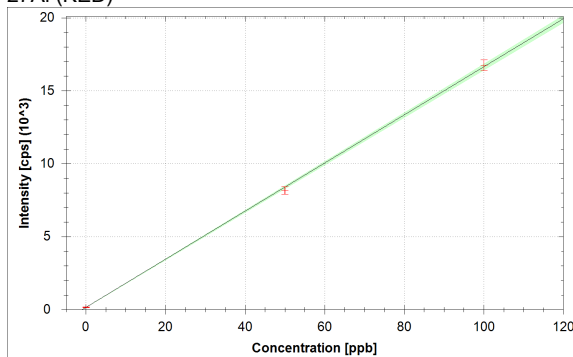
$$f(x) = 603.9193 \cdot x + 225.2158$$

$$R^2 = 0.9991$$

$$\text{BEC} = 0.373 \text{ ppb}$$

$$\text{LoD} = 0.1755 \text{ ppb}$$

27Al (KED)



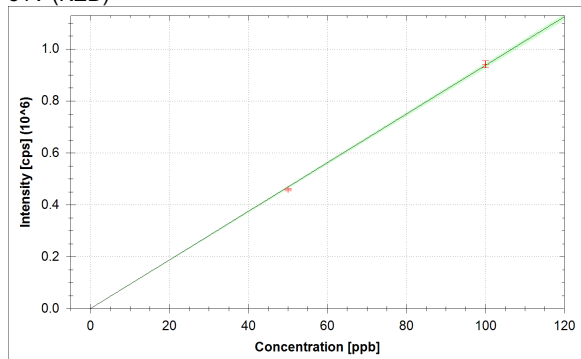
$$f(x) = 164.8650 \cdot x + 149.6967$$

$$R^2 = 0.9997$$

$$\text{BEC} = 0.908 \text{ ppb}$$

$$\text{LoD} = 0.2870 \text{ ppb}$$

51V (KED)



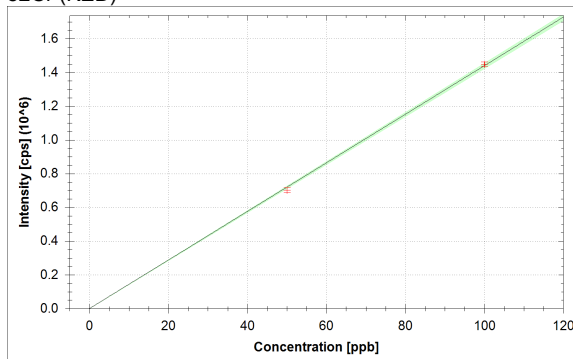
$$f(x) = 9365.5808 \cdot x + 33.0270$$

$$R^2 = 0.9998$$

$$\text{BEC} = 0.004 \text{ ppb}$$

$$\text{LoD} = 0.0016 \text{ ppb}$$

52Cr (KED)



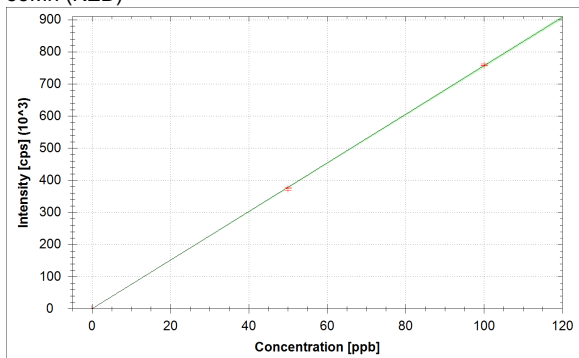
$$f(x) = 14397.2869 \cdot x + 141.3003$$

$$R^2 = 0.9997$$

$$\text{BEC} = 0.010 \text{ ppb}$$

$$\text{LoD} = 0.0005 \text{ ppb}$$

55Mn (KED)



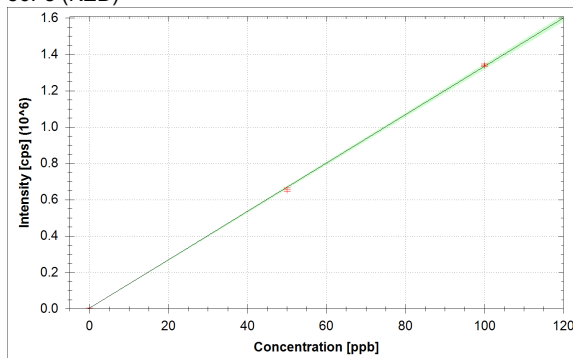
$$f(x) = 7561.7415 \cdot x + 96.3071$$

$$R^2 = 0.9999$$

$$\text{BEC} = 0.013 \text{ ppb}$$

$$\text{LoD} = 0.0076 \text{ ppb}$$

56Fe (KED)



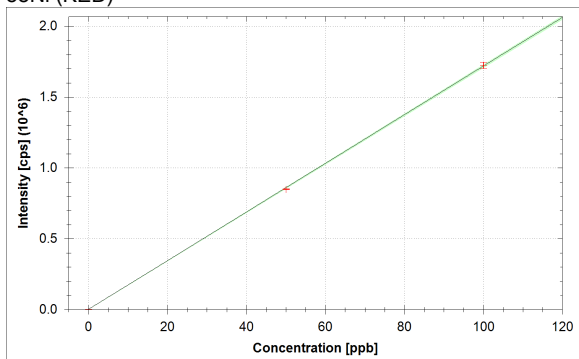
$$f(x) = 13303.4257 \cdot x + 3286.4174$$

$$R^2 = 0.9998$$

$$\text{BEC} = 0.247 \text{ ppb}$$

$$\text{LoD} = 0.0153 \text{ ppb}$$

58Ni (KED)



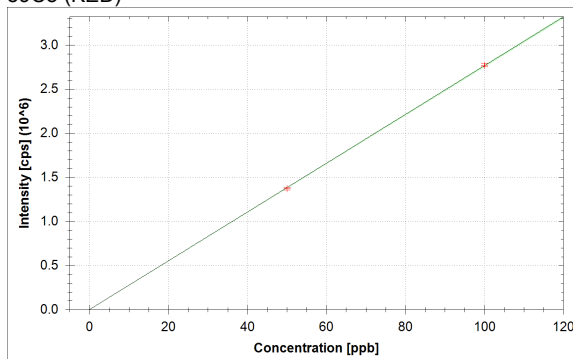
$$f(x) = 17176.2069 \cdot x + 1682.6768$$

$$R^2 = 0.9999$$

$$\text{BEC} = 0.098 \text{ ppb}$$

$$\text{LoD} = 0.0223 \text{ ppb}$$

59Co (KED)



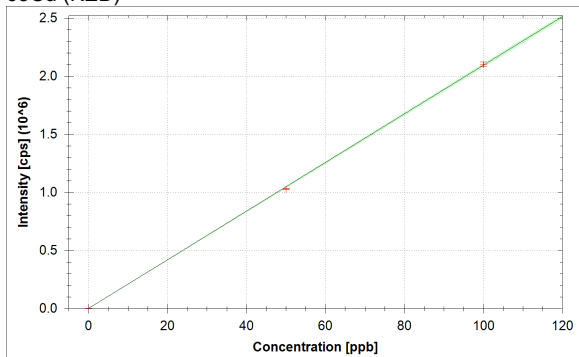
$$f(x) = 27650.6852 \cdot x + 128.1389$$

$$R^2 = 1.0000$$

$$\text{BEC} = 0.005 \text{ ppb}$$

$$\text{LoD} = 0.0017 \text{ ppb}$$

63Cu (KED)



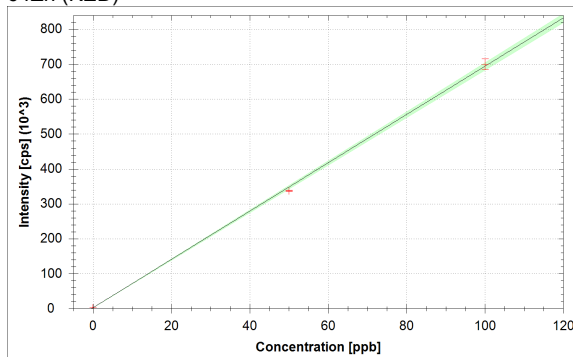
$$f(x) = 20937.4177 \cdot x + 969.3908$$

$$R^2 = 0.9999$$

$$\text{BEC} = 0.046 \text{ ppb}$$

$$\text{LoD} = 0.0119 \text{ ppb}$$

64Zn (KED)



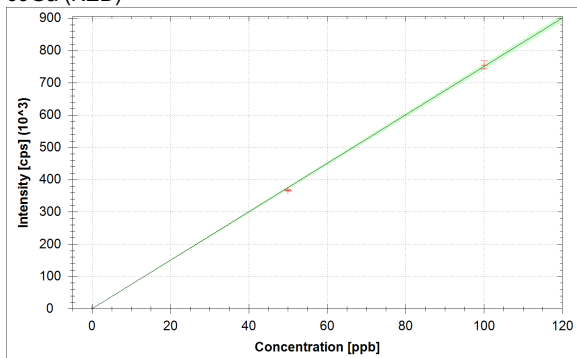
$$f(x) = 6915.5904 \cdot x + 2556.7146$$

$$R^2 = 0.9995$$

$$\text{BEC} = 0.370 \text{ ppb}$$

$$\text{LoD} = 0.0583 \text{ ppb}$$

69Ga (KED)



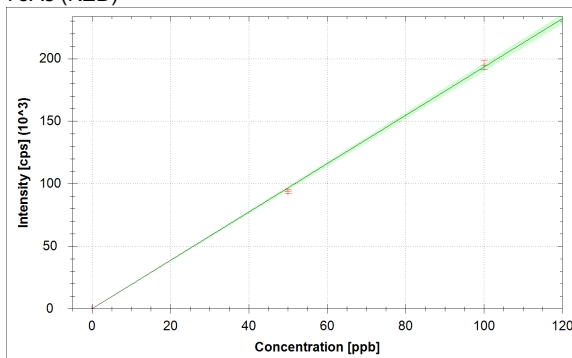
$$f(x) = 7502.6338 \cdot x + 113.0320$$

$$R^2 = 0.9998$$

$$\text{BEC} = 0.015 \text{ ppb}$$

$$\text{LoD} = 0.0058 \text{ ppb}$$

75As (KED)



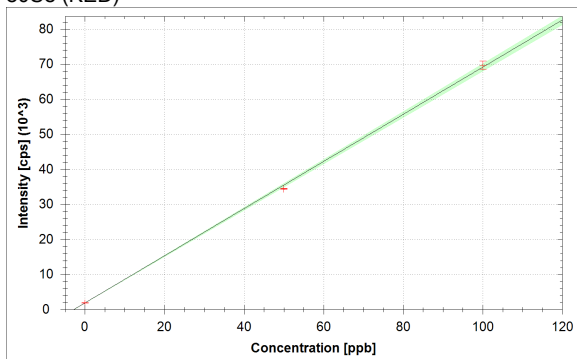
$$f(x) = 1932.3252 \cdot x + 9.6988$$

$$R^2 = 0.9995$$

$$\text{BEC} = 0.005 \text{ ppb}$$

$$\text{LoD} = 0.0001 \text{ ppb}$$

80Se (KED)



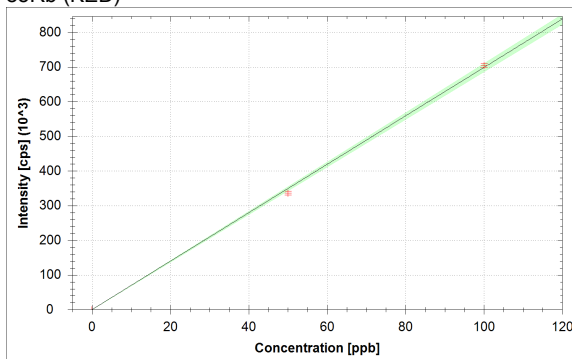
$$f(x) = 672.6231 \cdot x + 1888.9776$$

$$R^2 = 0.9995$$

$$\text{BEC} = 2.808 \text{ ppb}$$

$$\text{LoD} = 0.2617 \text{ ppb}$$

85Rb (KED)



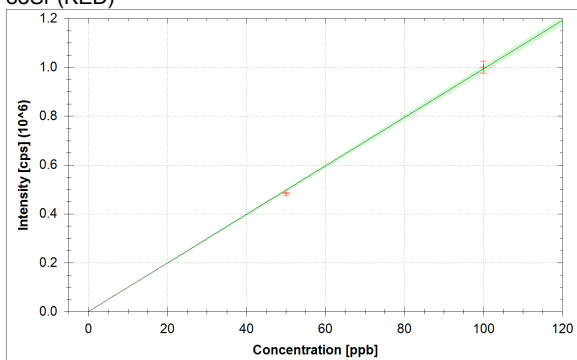
$$f(x) = 6986.8463 \cdot x + 25.9215$$

$$R^2 = 0.9994$$

$$\text{BEC} = 0.004 \text{ ppb}$$

$$\text{LoD} = 0.0066 \text{ ppb}$$

88Sr (KED)



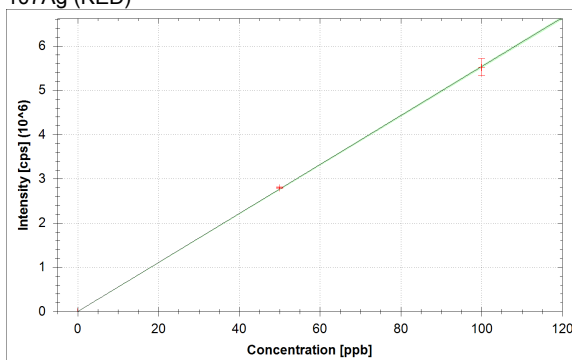
$$f(x) = 9926.7355 \cdot x + 217.7835$$

$$R^2 = 0.9996$$

$$\text{BEC} = 0.022 \text{ ppb}$$

$$\text{LoD} = 0.0081 \text{ ppb}$$

107Ag (KED)



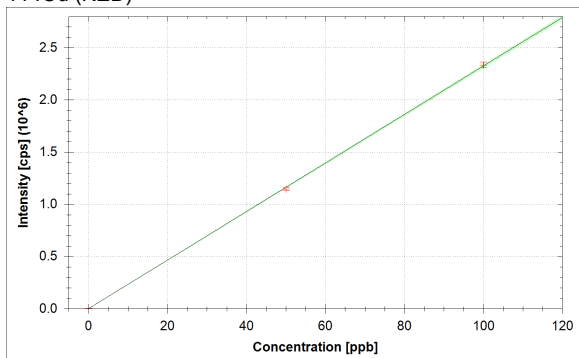
$$f(x) = 55343.1364 \cdot x + 727.3203$$

$$R^2 = 0.9999$$

$$\text{BEC} = 0.013 \text{ ppb}$$

$$\text{LoD} = 0.0004 \text{ ppb}$$

114Cd (KED)



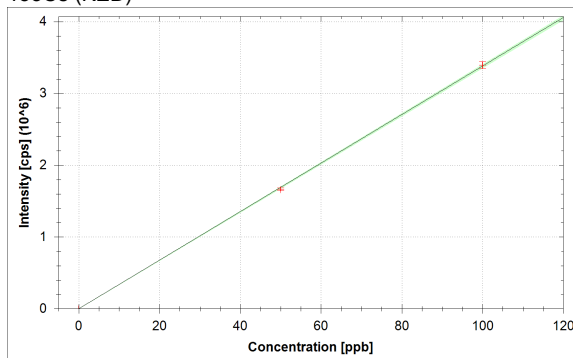
$$f(x) = 23232.2201 \cdot x + 775.1395$$

$$R^2 = 0.9999$$

$$\text{BEC} = 0.033 \text{ ppb}$$

$$\text{LoD} = 0.0090 \text{ ppb}$$

133Cs (KED)



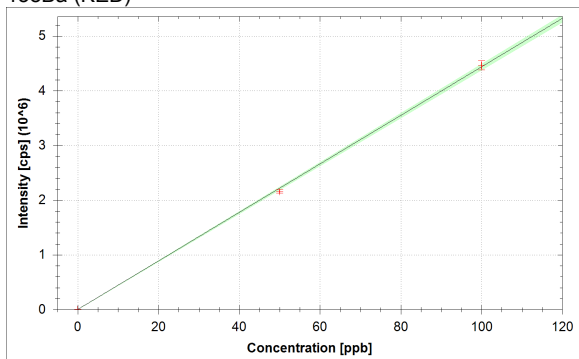
$$f(x) = 33816.6844 \cdot x + 179.8751$$

$$R^2 = 0.9999$$

$$\text{BEC} = 0.005 \text{ ppb}$$

$$\text{LoD} = 0.0006 \text{ ppb}$$

138Ba (KED)



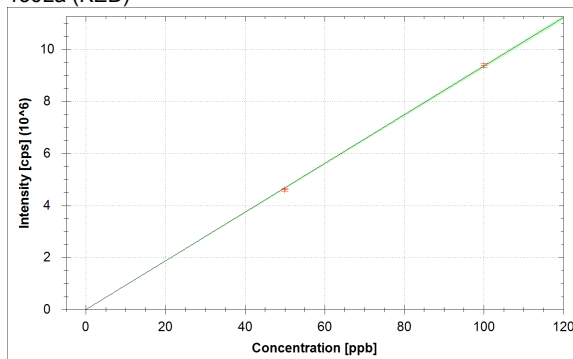
$$f(x) = 44349.9845 \cdot x + 1833.2376$$

$$R^2 = 0.9997$$

$$\text{BEC} = 0.041 \text{ ppb}$$

$$\text{LoD} = 0.0032 \text{ ppb}$$

139La (KED)



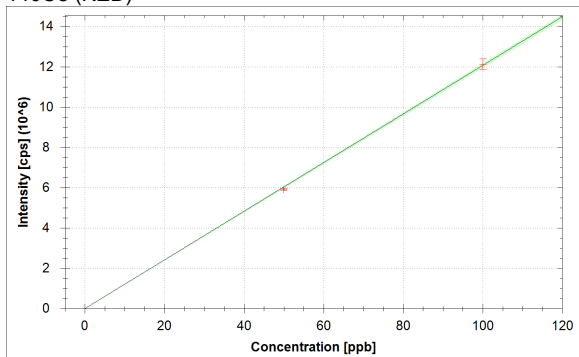
$$f(x) = 93575.6957 \cdot x + 341.2806$$

$$R^2 = 0.9999$$

$$\text{BEC} = 0.004 \text{ ppb}$$

$$\text{LoD} = 0.0007 \text{ ppb}$$

140Ce (KED)



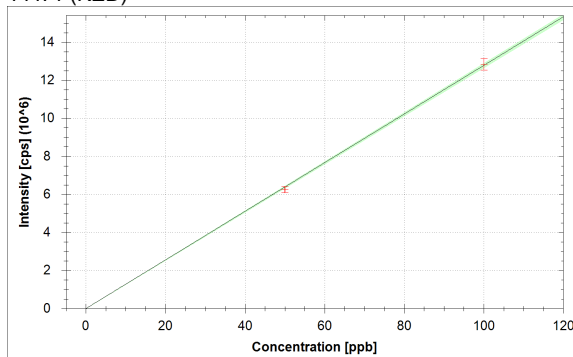
$$f(x) = 120723.1653 \cdot x + 470.5383$$

$$R^2 = 0.9998$$

$$\text{BEC} = 0.004 \text{ ppb}$$

$$\text{LoD} = 0.0001 \text{ ppb}$$

141Pr (KED)



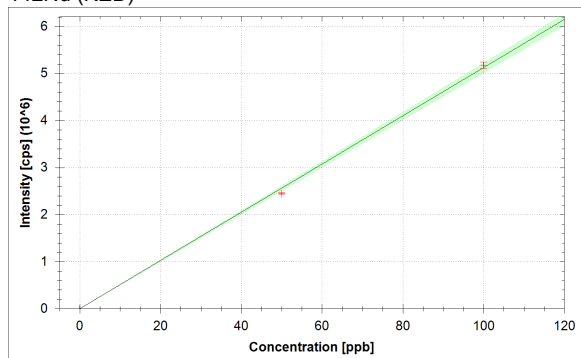
$$f(x) = 127743.8391 \cdot x + 356.2648$$

$$R^2 = 0.9998$$

$$\text{BEC} = 0.003 \text{ ppb}$$

$$\text{LoD} = 0.0004 \text{ ppb}$$

142Nd (KED)



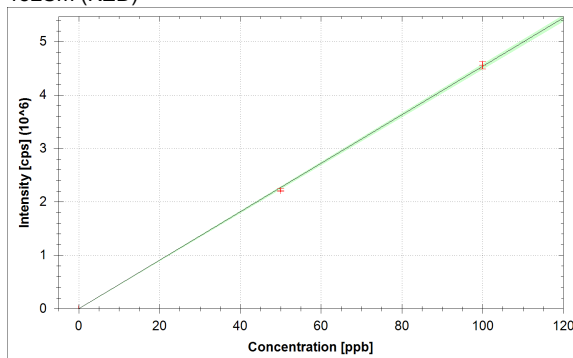
$$f(x) = 51221.8071 \cdot x + 162.6553$$

$$R^2 = 0.9992$$

$$\text{BEC} = 0.003 \text{ ppb}$$

$$\text{LoD} = 0.0002 \text{ ppb}$$

152Sm (KED)



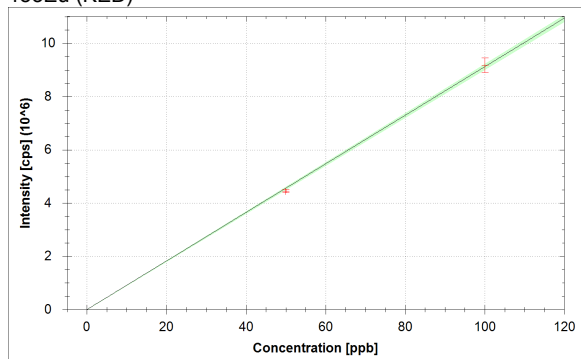
$$f(x) = 45334.5227 \cdot x + 99.4183$$

$$R^2 = 0.9998$$

$$\text{BEC} = 0.002 \text{ ppb}$$

$$\text{LoD} = 0.0005 \text{ ppb}$$

153Eu (KED)



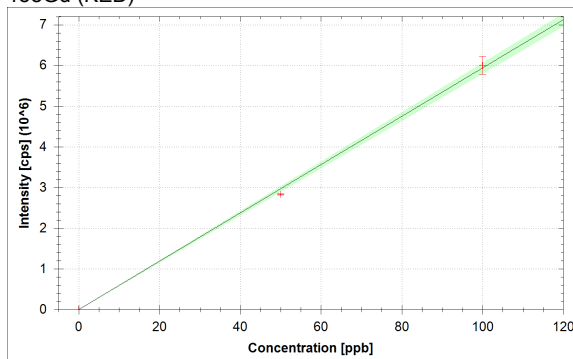
$$f(x) = 91224.4831 \cdot x + 199.6119$$

$$R^2 = 0.9997$$

$$\text{BEC} = 0.002 \text{ ppb}$$

$$\text{LoD} = 0.0001 \text{ ppb}$$

158Gd (KED)



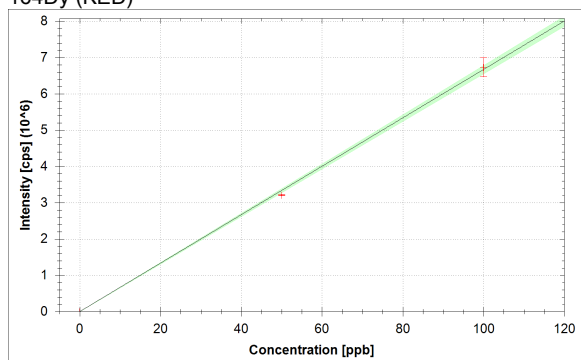
$$f(x) = 59381.6797 \cdot x + 105.9612$$

$$R^2 = 0.9991$$

$$\text{BEC} = 0.002 \text{ ppb}$$

$$\text{LoD} = 0.0004 \text{ ppb}$$

164Dy (KED)



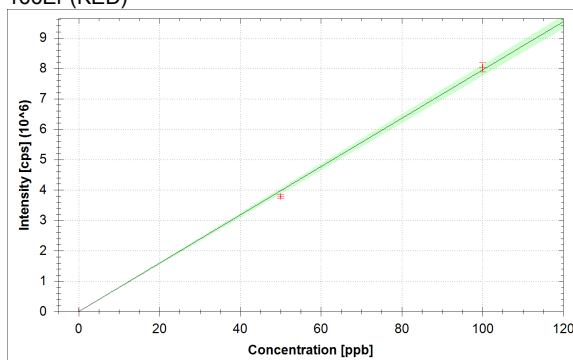
$$f(x) = 66718.4834 \cdot x + 129.8026$$

$$R^2 = 0.9994$$

$$\text{BEC} = 0.002 \text{ ppb}$$

$$\text{LoD} = 0.0007 \text{ ppb}$$

166Er (KED)



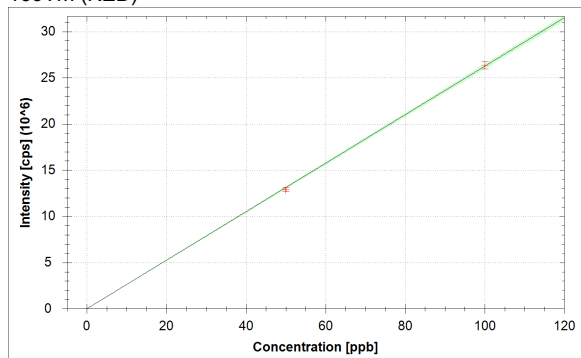
$$f(x) = 79426.9614 \cdot x + 286.8503$$

$$R^2 = 0.9990$$

$$\text{BEC} = 0.004 \text{ ppb}$$

$$\text{LoD} = 0.0008 \text{ ppb}$$

169Tm (KED)



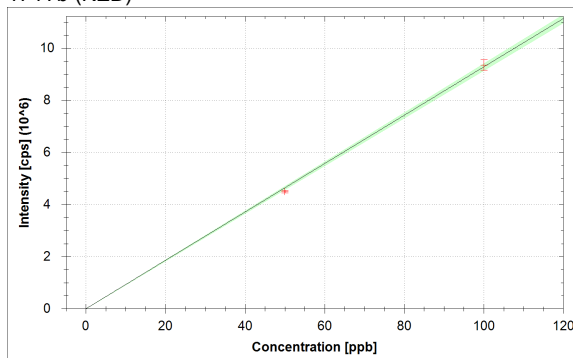
$$f(x) = 262507.3917 \cdot x + 356.2081$$

$$R^2 = 0.9998$$

$$\text{BEC} = 0.001 \text{ ppb}$$

$$\text{LoD} = 0.0001 \text{ ppb}$$

174Yb (KED)



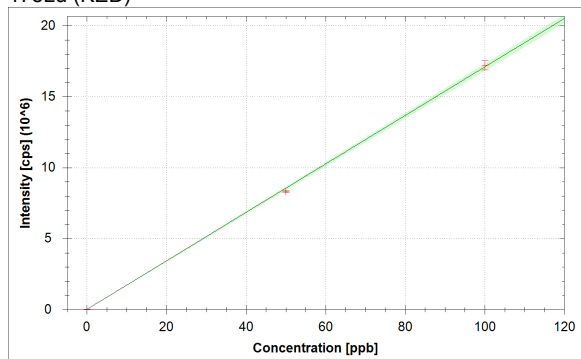
$$f(x) = 92829.2108 \cdot x + 121.0204$$

$$R^2 = 0.9996$$

$$\text{BEC} = 0.001 \text{ ppb}$$

$$\text{LoD} = 0.0002 \text{ ppb}$$

175Lu (KED)



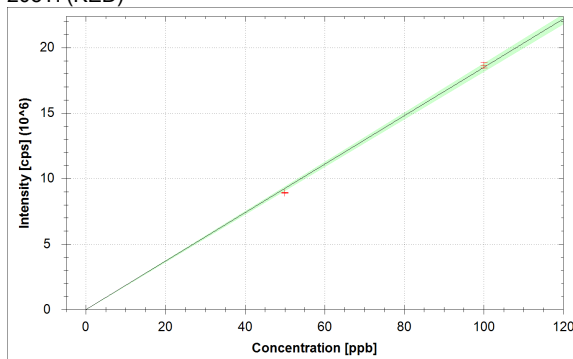
$$f(x) = 170808.4443 \cdot x + 11596.0225$$

$$R^2 = 0.9996$$

$$\text{BEC} = 0.068 \text{ ppb}$$

$$\text{LoD} = 0.0034 \text{ ppb}$$

205Tl (KED)



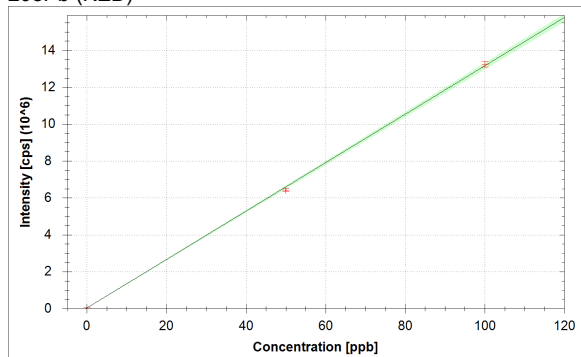
$$f(x) = 184851.3193 \cdot x + 272.2437$$

$$R^2 = 0.9994$$

$$\text{BEC} = 0.001 \text{ ppb}$$

$$\text{LoD} = 0.0001 \text{ ppb}$$

208Pb (KED)



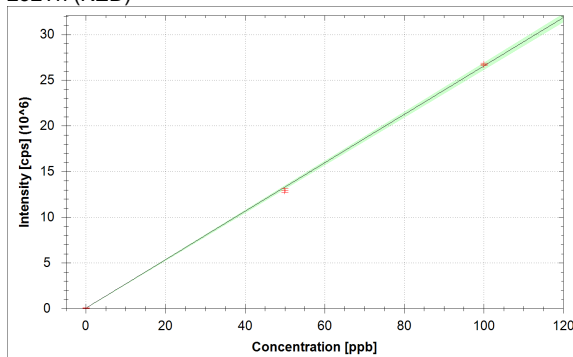
$$f(x) = 131220.8861 \cdot x + 33884.4695$$

$$R^2 = 0.9997$$

$$\text{BEC} = 0.258 \text{ ppb}$$

$$\text{LoD} = 0.0302 \text{ ppb}$$

232Th (KED)



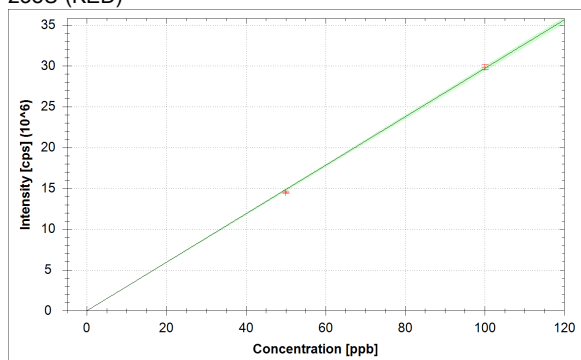
$$f(x) = 264995.0277 \cdot x + 46791.4732$$

$$R^2 = 0.9996$$

$$\text{BEC} = 0.177 \text{ ppb}$$

$$\text{LoD} = 0.0000 \text{ ppb}$$

238U (KED)



$$f(x) = 297017.1189 \cdot x + 338.7214$$

$$R^2 = 0.9998$$

$$\text{BEC} = 0.001 \text{ ppb}$$

$$\text{LoD} = 0.0002 \text{ ppb}$$

Standards:

Analysis Index: 3
 Analysis Name: 0+10
 Analysis Type: STD
 Analysis Started at: 10/12/2021 2:57:11 PM
 Standard (Stock): std0
 Standard DF: 1

Category	Concentration average	Concentration RSD	Standard Concentration
6Li (KED)	102.595 %		
9Be (KED)	0.000 ppb	1.7 %	0.000 ppb
11B (KED)	0.000 ppb	0.1 %	0.000 ppb
24Mg (KED)	0.000 ppb	0.1 %	0.000 ppb
27Al (KED)	0.000 ppb	0.2 %	0.000 ppb
45Sc (KED)	101.566 %		
51V (KED)	0.000 ppb	1.5 %	0.000 ppb
52Cr (KED)	0.000 ppb	0.4 %	0.000 ppb
55Mn (KED)	0.000 ppb	0.1 %	0.000 ppb
56Fe (KED)	0.000 ppb	0.0 %	0.000 ppb
58Ni (KED)	0.000 ppb	0.1 %	0.000 ppb
59Co (KED)	0.000 ppb	0.2 %	0.000 ppb
63Cu (KED)	0.000 ppb	0.1 %	0.000 ppb
64Zn (KED)	0.000 ppb	0.0 %	0.000 ppb
69Ga (KED)	0.000 ppb	0.3 %	0.000 ppb
75As (KED)	0.000 ppb	0.3 %	0.000 ppb
80Se (KED)	0.000 ppb	0.0 %	0.000 ppb
85Rb (KED)	0.000 ppb	0.3 %	0.000 ppb
88Sr (KED)	0.000 ppb	0.5 %	0.000 ppb
89Y (KED)	103.099 %		
107Ag (KED)	0.000 ppb	1.1 %	0.000 ppb
114Cd (KED)	0.000 ppb	0.3 %	0.000 ppb
115In (KED)	102.649 %		
133Cs (KED)	0.000 ppb	1.4 %	0.000 ppb
138Ba (KED)	0.000 ppb	0.2 %	0.000 ppb
139La (KED)	0.000 ppb	1.2 %	0.000 ppb
140Ce (KED)	0.000 ppb	1.0 %	0.000 ppb
141Pr (KED)	0.000 ppb	1.1 %	0.000 ppb
142Nd (KED)	0.000 ppb	1.0 %	0.000 ppb
152Sm (KED)	0.000 ppb	1.1 %	0.000 ppb
153Eu (KED)	0.000 ppb	0.9 %	0.000 ppb
158Gd (KED)	0.000 ppb	1.1 %	0.000 ppb
159Tb (KED)	102.553 %		
164Dy (KED)	0.000 ppb	0.9 %	0.000 ppb
166Er (KED)	0.000 ppb	0.4 %	0.000 ppb
169Tm (KED)	0.000 ppb	0.7 %	0.000 ppb
174Yb (KED)	0.000 ppb	0.8 %	0.000 ppb
175Lu (KED)	0.000 ppb	0.1 %	0.000 ppb
205Tl (KED)	0.000 ppb	0.6 %	0.000 ppb
208Pb (KED)	0.000 ppb	0.0 %	0.000 ppb
209Bi (KED)	102.185 %		
232Th (KED)	0.000 ppb	0.5 %	0.000 ppb
238U (KED)	0.000 ppb	0.7 %	0.000 ppb

Standards:

Analysis Index: 4
 Analysis Name: 50+10
 Analysis Type: STD
 Analysis Started at: 10/12/2021 3:02:29 PM
 Standard (Stock): std1
 Standard DF: 1

Category	Concentration average	Concentration RSD	Standard Concentration
6Li (KED)	99.189 %		
9Be (KED)	51.724 ppb	8.7 %	50.000 ppb
11B (KED)	54.692 ppb	4.9 %	50.000 ppb
24Mg (KED)	52.236 ppb	5.2 %	50.000 ppb
27Al (KED)	48.659 ppb	3.3 %	50.000 ppb
45Sc (KED)	109.468 %		
51V (KED)	49.002 ppb	1.1 %	50.000 ppb
52Cr (KED)	48.795 ppb	2.1 %	50.000 ppb
55Mn (KED)	49.376 ppb	1.2 %	50.000 ppb
56Fe (KED)	48.912 ppb	1.6 %	50.000 ppb
58Ni (KED)	49.332 ppb	0.4 %	50.000 ppb
59Co (KED)	49.595 ppb	1.0 %	50.000 ppb
63Cu (KED)	49.181 ppb	0.4 %	50.000 ppb
64Zn (KED)	48.350 ppb	0.7 %	50.000 ppb
69Ga (KED)	48.825 ppb	0.4 %	50.000 ppb
75As (KED)	48.364 ppb	1.6 %	50.000 ppb
80Se (KED)	48.341 ppb	0.4 %	50.000 ppb
85Rb (KED)	48.161 ppb	1.7 %	50.000 ppb
88Sr (KED)	48.581 ppb	1.1 %	50.000 ppb
89Y (KED)	110.964 %		
107Ag (KED)	50.527 ppb	0.6 %	50.000 ppb
114Cd (KED)	49.250 ppb	1.3 %	50.000 ppb
115In (KED)	109.028 %		
133Cs (KED)	49.198 ppb	1.2 %	50.000 ppb
138Ba (KED)	48.664 ppb	1.6 %	50.000 ppb
139La (KED)	49.225 ppb	1.2 %	50.000 ppb
140Ce (KED)	49.072 ppb	1.0 %	50.000 ppb
141Pr (KED)	49.009 ppb	2.4 %	50.000 ppb
142Nd (KED)	47.867 ppb	0.8 %	50.000 ppb
152Sm (KED)	48.889 ppb	1.3 %	50.000 ppb
153Eu (KED)	48.776 ppb	1.5 %	50.000 ppb
158Gd (KED)	47.704 ppb	0.7 %	50.000 ppb
159Tb (KED)	109.314 %		
164Dy (KED)	48.155 ppb	0.6 %	50.000 ppb
166Er (KED)	47.684 ppb	1.5 %	50.000 ppb
169Tm (KED)	49.065 ppb	1.7 %	50.000 ppb
174Yb (KED)	48.471 ppb	1.1 %	50.000 ppb
175Lu (KED)	48.576 ppb	1.0 %	50.000 ppb
205Tl (KED)	48.210 ppb	0.6 %	50.000 ppb
208Pb (KED)	48.672 ppb	1.1 %	50.000 ppb
209Bi (KED)	108.396 %		
232Th (KED)	48.508 ppb	1.6 %	50.000 ppb
238U (KED)	48.934 ppb	1.0 %	50.000 ppb

Standards:

Analysis Index: 5
 Analysis Name: 100+10
 Analysis Type: STD
 Analysis Started at: 10/12/2021 3:06:31 PM
 Standard (Stock): std2
 Standard DF: 1

Category	Concentration average	Concentration RSD	Standard Concentration
6Li (KED)	103.082 %		
9Be (KED)	99.138 ppb	5.1 %	100.000 ppb
11B (KED)	97.654 ppb	7.6 %	100.000 ppb
24Mg (KED)	98.882 ppb	6.4 %	100.000 ppb
27Al (KED)	100.670 ppb	2.2 %	100.000 ppb
45Sc (KED)	107.244 %		
51V (KED)	100.499 ppb	1.4 %	100.000 ppb
52Cr (KED)	100.602 ppb	0.9 %	100.000 ppb
55Mn (KED)	100.312 ppb	0.4 %	100.000 ppb
56Fe (KED)	100.544 ppb	0.5 %	100.000 ppb
58Ni (KED)	100.334 ppb	1.2 %	100.000 ppb
59Co (KED)	100.202 ppb	0.7 %	100.000 ppb
63Cu (KED)	100.410 ppb	1.0 %	100.000 ppb
64Zn (KED)	100.825 ppb	2.2 %	100.000 ppb
69Ga (KED)	100.587 ppb	1.7 %	100.000 ppb
75As (KED)	100.818 ppb	2.0 %	100.000 ppb
80Se (KED)	100.829 ppb	1.7 %	100.000 ppb
85Rb (KED)	100.920 ppb	0.8 %	100.000 ppb
88Sr (KED)	100.709 ppb	2.4 %	100.000 ppb
89Y (KED)	106.951 %		
107Ag (KED)	99.737 ppb	3.6 %	100.000 ppb
114Cd (KED)	100.375 ppb	1.2 %	100.000 ppb
115In (KED)	105.990 %		
133Cs (KED)	100.401 ppb	1.4 %	100.000 ppb
138Ba (KED)	100.668 ppb	1.9 %	100.000 ppb
139La (KED)	100.388 ppb	0.8 %	100.000 ppb
140Ce (KED)	100.464 ppb	2.3 %	100.000 ppb
141Pr (KED)	100.495 ppb	2.4 %	100.000 ppb
142Nd (KED)	101.066 ppb	1.3 %	100.000 ppb
152Sm (KED)	100.556 ppb	1.6 %	100.000 ppb
153Eu (KED)	100.612 ppb	3.0 %	100.000 ppb
158Gd (KED)	101.148 ppb	3.6 %	100.000 ppb
159Tb (KED)	107.484 %		
164Dy (KED)	100.922 ppb	3.9 %	100.000 ppb
166Er (KED)	101.158 ppb	1.9 %	100.000 ppb
169Tm (KED)	100.467 ppb	1.6 %	100.000 ppb
174Yb (KED)	100.765 ppb	2.1 %	100.000 ppb
175Lu (KED)	100.712 ppb	1.9 %	100.000 ppb
205Tl (KED)	100.895 ppb	1.2 %	100.000 ppb
208Pb (KED)	100.664 ppb	1.1 %	100.000 ppb
209Bi (KED)	106.032 %		
232Th (KED)	100.746 ppb	0.5 %	100.000 ppb
238U (KED)	100.533 ppb	1.0 %	100.000 ppb

Sample List Summary:

Instrument ID: iCAP Q

Index:	Label:	Main Runs:	Survey Runs:	Start Time:	User name:
1	water	3	0	10/12/2021 2:50:00 PM	WINDOWS-UPCI4ER\Administrator
2	blk	3	0	10/12/2021 2:53:03 PM	WINDOWS-UPCI4ER\Administrator
3	0+10	3	0	10/12/2021 2:57:11 PM	WINDOWS-UPCI4ER\Administrator
4	50+10	3	0	10/12/2021 3:02:29 PM	WINDOWS-UPCI4ER\Administrator
5	100+10	3	0	10/12/2021 3:06:31 PM	WINDOWS-UPCI4ER\Administrator
6	20ti	3	0	10/12/2021 3:10:20 PM	WINDOWS-UPCI4ER\Administrator
7	w7ti	3	0	10/12/2021 3:14:12 PM	WINDOWS-UPCI4ER\Administrator
8	27ti	3	0	10/12/2021 3:18:47 PM	WINDOWS-UPCI4ER\Administrator
9	00089ti	3	0	10/12/2021 3:23:07 PM	WINDOWS-UPCI4ER\Administrator
10	21ti	3	0	10/12/2021 3:27:21 PM	WINDOWS-UPCI4ER\Administrator
11	6ti	3	0	10/12/2021 3:31:54 PM	WINDOWS-UPCI4ER\Administrator
12	01963ti	3	0	10/12/2021 3:36:13 PM	WINDOWS-UPCI4ER\Administrator
13	01965ti	3	0	10/12/2021 3:40:28 PM	WINDOWS-UPCI4ER\Administrator
14	1497jian	3	0	10/12/2021 3:44:38 PM	WINDOWS-UPCI4ER\Administrator
15	1373jian	3	0	10/12/2021 3:48:23 PM	WINDOWS-UPCI4ER\Administrator
16	1481jian	3	0	10/12/2021 3:52:38 PM	WINDOWS-UPCI4ER\Administrator
17	81474jian	3	0	10/12/2021 3:56:28 PM	WINDOWS-UPCI4ER\Administrator
18	2120jian	3	0	10/12/2021 4:00:32 PM	WINDOWS-UPCI4ER\Administrator
19	2266jian	3	0	10/12/2021 4:04:33 PM	WINDOWS-UPCI4ER\Administrator
20	3865jian	3	0	10/12/2021 4:08:34 PM	WINDOWS-UPCI4ER\Administrator
21	3873jian	3	0	10/12/2021 4:12:28 PM	WINDOWS-UPCI4ER\Administrator
22	2104jian	3	0	10/12/2021 4:16:31 PM	WINDOWS-UPCI4ER\Administrator
23	1486jian	3	0	10/12/2021 4:20:38 PM	WINDOWS-UPCI4ER\Administrator
24	1485jian	3	0	10/12/2021 4:24:25 PM	WINDOWS-UPCI4ER\Administrator
25	1372jian	3	0	10/12/2021 4:28:16 PM	WINDOWS-UPCI4ER\Administrator
26	81482jian	3	0	10/12/2021 4:32:01 PM	WINDOWS-UPCI4ER\Administrator
27	2013jian	3	0	10/12/2021 4:36:11 PM	WINDOWS-UPCI4ER\Administrator
28	2316jian	3	0	10/12/2021 4:39:57 PM	WINDOWS-UPCI4ER\Administrator
29	3491jian	3	0	10/12/2021 4:43:56 PM	WINDOWS-UPCI4ER\Administrator

Sample Summary

Instrument ID: iCAP Q

Analysis index: 1

Analysis name: water

Analysis started at: 10/12/2021 2:50:00 PM

User name: WINDOWS-UPCI4ER\Administrator

Category	Concentration average	Concentration RSD
6Li (KED)	0.000 %	
11B (KED)	Infinity ppb	
24Mg (KED)	Infinity ppb	
27Al (KED)	26.744 ppb	146.1 %
45Sc (KED)	0.169 %	15.6 %
51V (KED)	0.380 ppb	86.7 %
52Cr (KED)	1.480 ppb	20.8 %
55Mn (KED)	4.787 ppb	7.4 %
56Fe (KED)	19.831 ppb	10.7 %
58Ni (KED)	67.870 ppb	11.1 %
59Co (KED)	0.166 ppb	102.2 %
63Cu (KED)	Infinity ppb	
64Zn (KED)	Infinity ppb	
69Ga (KED)	Infinity ppb	
75As (KED)	Infinity ppb	
80Se (KED)	Infinity ppb	
85Rb (KED)	Infinity ppb	
88Sr (KED)	Infinity ppb	
89Y (KED)	0.001 %	100.0 %
114Cd (KED)	Infinity ppb	
115In (KED)	0.000 %	173.2 %
138Ba (KED)	Infinity ppb	
142Nd (KED)	Infinity ppb	
159Tb (KED)	0.000 %	173.2 %
205Tl (KED)	0.953 ppb	45.8 %
208Pb (KED)	94.035 ppb	18.4 %
209Bi (KED)	0.003 %	16.7 %
232Th (KED)	0.059 ppb	350.0 %
238U (KED)	0.764 ppb	41.7 %

Category	Concentration average	Intensity average	Intensity RSD
6Li (KED)	0.000 %	0 cps	
9Be (KED)		0 cps	
11B (KED)	Infinity ppb	41 cps	54.0 %
24Mg (KED)	Infinity ppb	161 cps	13.1 %
27Al (KED)	26.744 ppb	7 cps	132.3 %
45Sc (KED)	0.169 %	44 cps	15.6 %
51V (KED)	0.380 ppb	6 cps	69.3 %
52Cr (KED)	1.480 ppb	36 cps	5.4 %
55Mn (KED)	4.787 ppb	61 cps	11.4 %
56Fe (KED)	19.831 ppb	449 cps	11.9 %
58Ni (KED)	67.870 ppb	1,955 cps	5.4 %
59Co (KED)	0.166 ppb	8 cps	107.9 %
63Cu (KED)	Infinity ppb	612 cps	3.7 %
64Zn (KED)	Infinity ppb	2,082 cps	2.7 %
69Ga (KED)	Infinity ppb	46 cps	23.5 %
75As (KED)	Infinity ppb	7 cps	50.0 %
80Se (KED)	Infinity ppb	1,867 cps	6.5 %
85Rb (KED)	Infinity ppb	40 cps	28.9 %
88Sr (KED)	Infinity ppb	88 cps	7.9 %

Category	Concentration average	Intensity average	Intensity RSD
89Y (KED)	0.001 %	3 cps	100.0 %
107Ag (KED)		8 cps	89.2 %
114Cd (KED)	Infinity ppb	29 cps	53.3 %
115In (KED)	0.000 %	1 cps	173.2 %
133Cs (KED)		3 cps	100.0 %
138Ba (KED)	Infinity ppb	821 cps	3.3 %
139La (KED)		2 cps	86.6 %
140Ce (KED)		1 cps	173.2 %
141Pr (KED)		1 cps	173.2 %
142Nd (KED)	Infinity ppb	2 cps	86.6 %
152Sm (KED)		0 cps	
153Eu (KED)		1 cps	173.2 %
158Gd (KED)		0 cps	
159Tb (KED)	0.000 %	1 cps	173.2 %
164Dy (KED)		1 cps	173.2 %
166Er (KED)		21 cps	173.2 %
169Tm (KED)		0 cps	
174Yb (KED)		0 cps	
175Lu (KED)		0 cps	
205Tl (KED)	0.953 ppb	6 cps	34.6 %
208Pb (KED)	94.035 ppb	402 cps	7.8 %
209Bi (KED)	0.003 %	60 cps	16.7 %
232Th (KED)	0.059 ppb	2 cps	86.6 %
238U (KED)	0.764 ppb	8 cps	49.5 %

Sample Summary

Instrument ID: iCAP Q

Analysis index: 2

Analysis name: blk

Analysis started at: 10/12/2021 2:53:03 PM

User name: WINDOWS-UPCI4ER\Administrator

Category	Concentration average	Concentration RSD
6Li (KED)	100.000 %	
9Be (KED)	-0.006 ppb	0.0 %
11B (KED)	-0.631 ppb	142.3 %
24Mg (KED)	0.066 ppb	88.1 %
27Al (KED)	-0.085 ppb	113.0 %
45Sc (KED)	100.000 %	
51V (KED)	-0.003 ppb	20.5 %
52Cr (KED)	0.000 ppb	72.8 %
55Mn (KED)	-0.004 ppb	70.5 %
56Fe (KED)	0.022 ppb	23.0 %
58Ni (KED)	-0.048 ppb	15.4 %
59Co (KED)	0.000 ppb	436.1 %
63Cu (KED)	0.009 ppb	43.8 %
64Zn (KED)	0.048 ppb	40.3 %
69Ga (KED)	-0.004 ppb	48.5 %
75As (KED)	-0.002 ppb	3.2 %
80Se (KED)	-0.042 ppb	207.4 %
85Rb (KED)	-0.001 ppb	415.0 %
88Sr (KED)	-0.007 ppb	41.0 %
89Y (KED)	100.000 %	
107Ag (KED)	-0.012 ppb	1.0 %
114Cd (KED)	-0.005 ppb	59.7 %
115In (KED)	100.000 %	
133Cs (KED)	-0.005 ppb	4.0 %
138Ba (KED)	0.001 ppb	99.6 %
139La (KED)	-0.003 ppb	7.7 %
140Ce (KED)	-0.003 ppb	1.2 %
141Pr (KED)	-0.003 ppb	5.8 %
142Nd (KED)	-0.002 ppb	2.9 %
152Sm (KED)	-0.002 ppb	8.4 %
153Eu (KED)	-0.002 ppb	1.9 %
158Gd (KED)	-0.002 ppb	7.8 %
159Tb (KED)	100.000 %	
164Dy (KED)	-0.002 ppb	15.4 %
166Er (KED)	-0.001 ppb	21.9 %
169Tm (KED)	-0.001 ppb	2.3 %
174Yb (KED)	-0.001 ppb	5.7 %
175Lu (KED)	0.010 ppb	11.1 %
205Tl (KED)	-0.001 ppb	3.0 %
208Pb (KED)	-0.002 ppb	615.7 %
209Bi (KED)	100.000 %	
232Th (KED)	-0.176 ppb	0.0 %
238U (KED)	-0.001 ppb	8.5 %

Category	Concentration average	Intensity average	Intensity RSD
6Li (KED)	100.000 %	1,370 cps	4.6 %
9Be (KED)	-0.006 ppb	0 cps	
11B (KED)	-0.631 ppb	541 cps	14.2 %
24Mg (KED)	0.066 ppb	266 cps	14.9 %
27Al (KED)	-0.085 ppb	136 cps	9.9 %

Category	Concentration average	Intensity average	Intensity RSD
45Sc (KED)	100.000 %	26,240 cps	1.7 %
51V (KED)	-0.003 ppb	9 cps	57.3 %
52Cr (KED)	0.000 ppb	144 cps	2.7 %
55Mn (KED)	-0.004 ppb	69 cps	27.5 %
56Fe (KED)	0.022 ppb	3,582 cps	1.7 %
58Ni (KED)	-0.048 ppb	852 cps	14.4 %
59Co (KED)	0.000 ppb	124 cps	11.2 %
63Cu (KED)	0.009 ppb	1,159 cps	6.0 %
64Zn (KED)	0.048 ppb	2,891 cps	6.0 %
69Ga (KED)	-0.004 ppb	83 cps	18.3 %
75As (KED)	-0.002 ppb	7 cps	0.0 %
80Se (KED)	-0.042 ppb	1,860 cps	1.8 %
85Rb (KED)	-0.001 ppb	22 cps	69.3 %
88Sr (KED)	-0.007 ppb	152 cps	17.8 %
89Y (KED)	100.000 %	237,360 cps	1.4 %
107Ag (KED)	-0.012 ppb	60 cps	9.6 %
114Cd (KED)	-0.005 ppb	658 cps	8.7 %
115In (KED)	100.000 %	434,238 cps	1.8 %
133Cs (KED)	-0.005 ppb	9 cps	78.1 %
138Ba (KED)	0.001 ppb	1,881 cps	2.3 %
139La (KED)	-0.003 ppb	49 cps	45.4 %
140Ce (KED)	-0.003 ppb	144 cps	3.5 %
141Pr (KED)	-0.003 ppb	36 cps	51.6 %
142Nd (KED)	-0.002 ppb	38 cps	10.2 %
152Sm (KED)	-0.002 ppb	16 cps	44.6 %
153Eu (KED)	-0.002 ppb	17 cps	20.0 %
158Gd (KED)	-0.002 ppb	16 cps	44.6 %
159Tb (KED)	100.000 %	2,033,781 cps	0.8 %
164Dy (KED)	-0.002 ppb	24 cps	67.3 %
166Er (KED)	-0.001 ppb	194 cps	10.0 %
169Tm (KED)	-0.001 ppb	48 cps	14.5 %
174Yb (KED)	-0.001 ppb	36 cps	14.3 %
175Lu (KED)	0.010 ppb	13,336 cps	1.5 %
205Tl (KED)	-0.001 ppb	12 cps	63.0 %
208Pb (KED)	-0.002 ppb	33,663 cps	3.5 %
209Bi (KED)	100.000 %	1,813,089 cps	1.7 %
232Th (KED)	-0.176 ppb	68 cps	2.8 %
238U (KED)	-0.001 ppb	108 cps	17.0 %

Sample Summary

Instrument ID: iCAP Q

Analysis index: 3

Analysis name: 0+10

Analysis started at: 10/12/2021 2:57:11 PM

User name: WINDOWS-UPCI4ER\Administrator

Category	Concentration average	Concentration RSD
6Li (KED)	102.595 %	
9Be (KED)	0.000 ppb	1.7 %
11B (KED)	0.000 ppb	0.1 %
24Mg (KED)	0.000 ppb	0.1 %
27Al (KED)	0.000 ppb	0.2 %
45Sc (KED)	101.566 %	
51V (KED)	0.000 ppb	1.5 %
52Cr (KED)	0.000 ppb	0.4 %
55Mn (KED)	0.000 ppb	0.1 %
56Fe (KED)	0.000 ppb	0.0 %
58Ni (KED)	0.000 ppb	0.1 %
59Co (KED)	0.000 ppb	0.2 %
63Cu (KED)	0.000 ppb	0.1 %
64Zn (KED)	0.000 ppb	0.0 %
69Ga (KED)	0.000 ppb	0.3 %
75As (KED)	0.000 ppb	0.3 %
80Se (KED)	0.000 ppb	0.0 %
85Rb (KED)	0.000 ppb	0.3 %
88Sr (KED)	0.000 ppb	0.5 %
89Y (KED)	103.099 %	
107Ag (KED)	0.000 ppb	1.1 %
114Cd (KED)	0.000 ppb	0.3 %
115In (KED)	102.649 %	
133Cs (KED)	0.000 ppb	1.4 %
138Ba (KED)	0.000 ppb	0.2 %
139La (KED)	0.000 ppb	1.2 %
140Ce (KED)	0.000 ppb	1.0 %
141Pr (KED)	0.000 ppb	1.1 %
142Nd (KED)	0.000 ppb	1.0 %
152Sm (KED)	0.000 ppb	1.1 %
153Eu (KED)	0.000 ppb	0.9 %
158Gd (KED)	0.000 ppb	1.1 %
159Tb (KED)	102.553 %	
164Dy (KED)	0.000 ppb	0.9 %
166Er (KED)	0.000 ppb	0.4 %
169Tm (KED)	0.000 ppb	0.7 %
174Yb (KED)	0.000 ppb	0.8 %
175Lu (KED)	0.000 ppb	0.1 %
205Tl (KED)	0.000 ppb	0.6 %
208Pb (KED)	0.000 ppb	0.0 %
209Bi (KED)	102.185 %	
232Th (KED)	0.000 ppb	0.5 %
238U (KED)	0.000 ppb	0.7 %

Category	Concentration average	Intensity average	Intensity RSD
6Li (KED)	102.595 %	1,406 cps	2.3 %
9Be (KED)	0.000 ppb	1 cps	173.2 %
11B (KED)	0.000 ppb	613 cps	4.4 %
24Mg (KED)	0.000 ppb	231 cps	7.3 %
27Al (KED)	0.000 ppb	152 cps	19.7 %

Category	Concentration average	Intensity average	Intensity RSD
45Sc (KED)	101.566 %	26,651 cps	1.1 %
51V (KED)	0.000 ppb	33 cps	147.3 %
52Cr (KED)	0.000 ppb	143 cps	34.4 %
55Mn (KED)	0.000 ppb	98 cps	3.9 %
56Fe (KED)	0.000 ppb	3,337 cps	3.0 %
58Ni (KED)	0.000 ppb	1,708 cps	8.0 %
59Co (KED)	0.000 ppb	130 cps	16.8 %
63Cu (KED)	0.000 ppb	1,000 cps	12.4 %
64Zn (KED)	0.000 ppb	2,636 cps	2.4 %
69Ga (KED)	0.000 ppb	117 cps	34.8 %
75As (KED)	0.000 ppb	10 cps	33.3 %
80Se (KED)	0.000 ppb	1,948 cps	4.0 %
85Rb (KED)	0.000 ppb	27 cps	33.1 %
88Sr (KED)	0.000 ppb	223 cps	51.9 %
89Y (KED)	103.099 %	244,715 cps	1.5 %
107Ag (KED)	0.000 ppb	742 cps	107.1 %
114Cd (KED)	0.000 ppb	794 cps	27.2 %
115In (KED)	102.649 %	445,739 cps	0.8 %
133Cs (KED)	0.000 ppb	183 cps	135.4 %
138Ba (KED)	0.000 ppb	1,878 cps	14.2 %
139La (KED)	0.000 ppb	347 cps	122.4 %
140Ce (KED)	0.000 ppb	479 cps	95.4 %
141Pr (KED)	0.000 ppb	362 cps	109.6 %
142Nd (KED)	0.000 ppb	166 cps	95.4 %
152Sm (KED)	0.000 ppb	101 cps	105.5 %
153Eu (KED)	0.000 ppb	203 cps	85.4 %
158Gd (KED)	0.000 ppb	108 cps	104.3 %
159Tb (KED)	102.553 %	2,085,696 cps	1.2 %
164Dy (KED)	0.000 ppb	132 cps	88.1 %
166Er (KED)	0.000 ppb	293 cps	35.3 %
169Tm (KED)	0.000 ppb	363 cps	67.4 %
174Yb (KED)	0.000 ppb	123 cps	78.7 %
175Lu (KED)	0.000 ppb	11,887 cps	5.1 %
205Tl (KED)	0.000 ppb	277 cps	62.1 %
208Pb (KED)	0.000 ppb	34,624 cps	1.4 %
209Bi (KED)	102.185 %	1,852,709 cps	1.4 %
232Th (KED)	0.000 ppb	47,633 cps	47.5 %
238U (KED)	0.000 ppb	344 cps	64.0 %

Sample Summary

Instrument ID: iCAP Q

Analysis index: 4

Analysis name: 50+10

Analysis started at: 10/12/2021 3:02:29 PM

User name: WINDOWS-UPCI4ER\Administrator

Category	Concentration average	Concentration RSD
6Li (KED)	99.189 %	
9Be (KED)	51.724 ppb	8.7 %
11B (KED)	54.692 ppb	4.9 %
24Mg (KED)	52.236 ppb	5.2 %
27Al (KED)	48.659 ppb	3.3 %
45Sc (KED)	109.468 %	
51V (KED)	49.002 ppb	1.1 %
52Cr (KED)	48.795 ppb	2.1 %
55Mn (KED)	49.376 ppb	1.2 %
56Fe (KED)	48.912 ppb	1.6 %
58Ni (KED)	49.332 ppb	0.4 %
59Co (KED)	49.595 ppb	1.0 %
63Cu (KED)	49.181 ppb	0.4 %
64Zn (KED)	48.350 ppb	0.7 %
69Ga (KED)	48.825 ppb	0.4 %
75As (KED)	48.364 ppb	1.6 %
80Se (KED)	48.341 ppb	0.4 %
85Rb (KED)	48.161 ppb	1.7 %
88Sr (KED)	48.581 ppb	1.1 %
89Y (KED)	110.964 %	
107Ag (KED)	50.527 ppb	0.6 %
114Cd (KED)	49.250 ppb	1.3 %
115In (KED)	109.028 %	
133Cs (KED)	49.198 ppb	1.2 %
138Ba (KED)	48.664 ppb	1.6 %
139La (KED)	49.225 ppb	1.2 %
140Ce (KED)	49.072 ppb	1.0 %
141Pr (KED)	49.009 ppb	2.4 %
142Nd (KED)	47.867 ppb	0.8 %
152Sm (KED)	48.889 ppb	1.3 %
153Eu (KED)	48.776 ppb	1.5 %
158Gd (KED)	47.704 ppb	0.7 %
159Tb (KED)	109.314 %	
164Dy (KED)	48.155 ppb	0.6 %
166Er (KED)	47.684 ppb	1.5 %
169Tm (KED)	49.065 ppb	1.7 %
174Yb (KED)	48.471 ppb	1.1 %
175Lu (KED)	48.576 ppb	1.0 %
205Tl (KED)	48.210 ppb	0.6 %
208Pb (KED)	48.672 ppb	1.1 %
209Bi (KED)	108.396 %	
232Th (KED)	48.508 ppb	1.6 %
238U (KED)	48.934 ppb	1.0 %

Category	Concentration average	Intensity average	Intensity RSD
6Li (KED)	99.189 %	1,359 cps	6.9 %
9Be (KED)	51.724 ppb	9,107 cps	2.4 %
11B (KED)	54.692 ppb	5,449 cps	3.5 %
24Mg (KED)	52.236 ppb	31,441 cps	2.0 %
27Al (KED)	48.659 ppb	8,943 cps	2.0 %

Category	Concentration average	Intensity average	Intensity RSD
45Sc (KED)	109.468 %	28,724 cps	1.3 %
51V (KED)	49.002 ppb	502,384 cps	1.0 %
52Cr (KED)	48.795 ppb	769,070 cps	1.2 %
55Mn (KED)	49.376 ppb	408,800 cps	1.0 %
56Fe (KED)	48.912 ppb	715,832 cps	1.2 %
58Ni (KED)	49.332 ppb	929,422 cps	1.5 %
59Co (KED)	49.595 ppb	1,501,193 cps	0.3 %
63Cu (KED)	49.181 ppb	1,143,661 cps	0.7 %
64Zn (KED)	48.350 ppb	373,856 cps	0.7 %
69Ga (KED)	48.825 ppb	406,608 cps	1.1 %
75As (KED)	48.364 ppb	103,724 cps	2.6 %
80Se (KED)	48.341 ppb	38,176 cps	0.9 %
85Rb (KED)	48.161 ppb	373,373 cps	0.6 %
88Sr (KED)	48.581 ppb	535,345 cps	1.0 %
89Y (KED)	110.964 %	263,384 cps	1.0 %
107Ag (KED)	50.527 ppb	3,049,513 cps	0.3 %
114Cd (KED)	49.250 ppb	1,248,286 cps	1.0 %
115In (KED)	109.028 %	473,441 cps	0.3 %
133Cs (KED)	49.198 ppb	1,814,098 cps	1.1 %
138Ba (KED)	48.664 ppb	2,361,129 cps	0.9 %
139La (KED)	49.225 ppb	5,035,385 cps	0.7 %
140Ce (KED)	49.072 ppb	6,476,193 cps	0.4 %
141Pr (KED)	49.009 ppb	6,843,599 cps	2.1 %
142Nd (KED)	47.867 ppb	2,680,297 cps	0.1 %
152Sm (KED)	48.889 ppb	2,422,733 cps	0.7 %
153Eu (KED)	48.776 ppb	4,864,217 cps	1.6 %
158Gd (KED)	47.704 ppb	3,096,606 cps	0.1 %
159Tb (KED)	109.314 %	2,223,199 cps	0.7 %
164Dy (KED)	48.155 ppb	3,512,117 cps	0.2 %
166Er (KED)	47.684 ppb	4,140,489 cps	1.7 %
169Tm (KED)	49.065 ppb	14,079,619 cps	1.7 %
174Yb (KED)	48.471 ppb	4,918,700 cps	1.2 %
175Lu (KED)	48.576 ppb	9,082,253 cps	0.5 %
205Tl (KED)	48.210 ppb	9,659,902 cps	0.2 %
208Pb (KED)	48.672 ppb	6,959,512 cps	0.8 %
209Bi (KED)	108.396 %	1,965,309 cps	0.7 %
232Th (KED)	48.508 ppb	13,983,390 cps	1.0 %
238U (KED)	48.934 ppb	15,754,184 cps	0.4 %

Sample Summary

Instrument ID: iCAP Q

Analysis index: 5

Analysis name: 100+10

Analysis started at: 10/12/2021 3:06:31 PM

User name: WINDOWS-UPCI4ER\Administrator

Category	Concentration average	Concentration RSD
6Li (KED)	103.082 %	
9Be (KED)	99.138 ppb	5.1 %
11B (KED)	97.654 ppb	7.6 %
24Mg (KED)	98.882 ppb	6.4 %
27Al (KED)	100.670 ppb	2.2 %
45Sc (KED)	107.244 %	
51V (KED)	100.499 ppb	1.4 %
52Cr (KED)	100.602 ppb	0.9 %
55Mn (KED)	100.312 ppb	0.4 %
56Fe (KED)	100.544 ppb	0.5 %
58Ni (KED)	100.334 ppb	1.2 %
59Co (KED)	100.202 ppb	0.7 %
63Cu (KED)	100.410 ppb	1.0 %
64Zn (KED)	100.825 ppb	2.2 %
69Ga (KED)	100.587 ppb	1.7 %
75As (KED)	100.818 ppb	2.0 %
80Se (KED)	100.829 ppb	1.7 %
85Rb (KED)	100.920 ppb	0.8 %
88Sr (KED)	100.709 ppb	2.4 %
89Y (KED)	106.951 %	
107Ag (KED)	99.737 ppb	3.6 %
114Cd (KED)	100.375 ppb	1.2 %
115In (KED)	105.990 %	
133Cs (KED)	100.401 ppb	1.4 %
138Ba (KED)	100.668 ppb	1.9 %
139La (KED)	100.388 ppb	0.8 %
140Ce (KED)	100.464 ppb	2.3 %
141Pr (KED)	100.495 ppb	2.4 %
142Nd (KED)	101.066 ppb	1.3 %
152Sm (KED)	100.556 ppb	1.6 %
153Eu (KED)	100.612 ppb	3.0 %
158Gd (KED)	101.148 ppb	3.6 %
159Tb (KED)	107.484 %	
164Dy (KED)	100.922 ppb	3.9 %
166Er (KED)	101.158 ppb	1.9 %
169Tm (KED)	100.467 ppb	1.6 %
174Yb (KED)	100.765 ppb	2.1 %
175Lu (KED)	100.712 ppb	1.9 %
205Tl (KED)	100.895 ppb	1.2 %
208Pb (KED)	100.664 ppb	1.1 %
209Bi (KED)	106.032 %	
232Th (KED)	100.746 ppb	0.5 %
238U (KED)	100.533 ppb	1.0 %

Category	Concentration average	Intensity average	Intensity RSD
6Li (KED)	103.082 %	1,412 cps	5.1 %
9Be (KED)	99.138 ppb	18,181 cps	1.9 %
11B (KED)	97.654 ppb	9,622 cps	2.2 %
24Mg (KED)	98.882 ppb	61,659 cps	1.5 %
27Al (KED)	100.670 ppb	17,960 cps	2.1 %

Category	Concentration average	Intensity average	Intensity RSD
45Sc (KED)	107.244 %	28,141 cps	0.4 %
51V (KED)	100.499 ppb	1,009,440 cps	1.3 %
52Cr (KED)	100.602 ppb	1,553,510 cps	1.3 %
55Mn (KED)	100.312 ppb	813,591 cps	0.8 %
56Fe (KED)	100.544 ppb	1,438,016 cps	0.9 %
58Ni (KED)	100.334 ppb	1,850,034 cps	1.5 %
59Co (KED)	100.202 ppb	2,971,538 cps	1.0 %
63Cu (KED)	100.410 ppb	2,249,141 cps	1.7 %
64Zn (KED)	100.825 ppb	748,221 cps	1.2 %
69Ga (KED)	100.587 ppb	807,023 cps	0.9 %
75As (KED)	100.818 ppb	208,297 cps	0.8 %
80Se (KED)	100.829 ppb	74,534 cps	1.1 %
85Rb (KED)	100.920 ppb	754,052 cps	1.8 %
88Sr (KED)	100.709 ppb	1,069,084 cps	1.6 %
89Y (KED)	106.951 %	253,859 cps	2.5 %
107Ag (KED)	99.737 ppb	5,849,963 cps	2.9 %
114Cd (KED)	100.375 ppb	2,472,201 cps	0.1 %
115In (KED)	105.990 %	460,250 cps	1.3 %
133Cs (KED)	100.401 ppb	3,598,376 cps	0.3 %
138Ba (KED)	100.668 ppb	4,799,327 cps	0.7 %
139La (KED)	100.388 ppb	10,095,997 cps	1.6 %
140Ce (KED)	100.464 ppb	13,032,037 cps	0.7 %
141Pr (KED)	100.495 ppb	13,793,834 cps	0.7 %
142Nd (KED)	101.066 ppb	5,563,355 cps	1.2 %
152Sm (KED)	100.556 ppb	4,898,792 cps	1.1 %
153Eu (KED)	100.612 ppb	9,860,706 cps	0.7 %
158Gd (KED)	101.148 ppb	6,452,737 cps	2.0 %
159Tb (KED)	107.484 %	2,185,998 cps	2.4 %
164Dy (KED)	100.922 ppb	7,232,991 cps	1.5 %
166Er (KED)	101.158 ppb	8,635,205 cps	2.3 %
169Tm (KED)	100.467 ppb	28,343,594 cps	2.0 %
174Yb (KED)	100.765 ppb	10,050,711 cps	0.5 %
175Lu (KED)	100.712 ppb	18,496,819 cps	0.6 %
205Tl (KED)	100.895 ppb	19,775,980 cps	1.3 %
208Pb (KED)	100.664 ppb	14,041,729 cps	0.9 %
209Bi (KED)	106.032 %	1,922,451 cps	0.2 %
232Th (KED)	100.746 ppb	28,357,130 cps	0.6 %
238U (KED)	100.533 ppb	31,661,756 cps	1.2 %

Sample Summary

Instrument ID: iCAP Q

Analysis index: 6

Analysis name: 20ti

Analysis started at: 10/12/2021 3:10:20 PM

User name: WINDOWS-UPCI4ER\Administrator

Category	Concentration average	Concentration RSD
6Li (KED)	105.596 %	2.0 %
9Be (KED)	0.011 ppb	152.9 %
11B (KED)	-2.205 ppb	18.1 %
24Mg (KED)	102.476 ppb	3.7 %
27Al (KED)	93.844 ppb	0.7 %
45Sc (KED)	103.896 %	2.9 %
51V (KED)	0.171 ppb	2.1 %
52Cr (KED)	1.125 ppb	1.2 %
55Mn (KED)	3.116 ppb	0.8 %
56Fe (KED)	119.773 ppb	1.0 %
58Ni (KED)	0.637 ppb	4.4 %
59Co (KED)	0.052 ppb	7.6 %
63Cu (KED)	7.219 ppb	2.4 %
64Zn (KED)	49.462 ppb	1.8 %
69Ga (KED)	0.427 ppb	1.5 %
75As (KED)	0.055 ppb	1.0 %
80Se (KED)	-0.351 ppb	10.4 %
85Rb (KED)	1.013 ppb	3.8 %
88Sr (KED)	1.569 ppb	3.2 %
89Y (KED)	105.696 %	2.5 %
107Ag (KED)	0.439 ppb	0.8 %
114Cd (KED)	0.013 ppb	23.6 %
115In (KED)	105.495 %	2.6 %
133Cs (KED)	0.013 ppb	15.2 %
138Ba (KED)	1.517 ppb	1.2 %
139La (KED)	0.091 ppb	3.0 %
140Ce (KED)	0.350 ppb	3.2 %
141Pr (KED)	0.021 ppb	5.0 %
142Nd (KED)	0.168 ppb	4.4 %
152Sm (KED)	0.014 ppb	7.3 %
153Eu (KED)	0.002 ppb	22.9 %
158Gd (KED)	0.013 ppb	5.5 %
159Tb (KED)	108.370 %	2.0 %
164Dy (KED)	0.009 ppb	2.8 %
166Er (KED)	0.012 ppb	9.3 %
169Tm (KED)	0.000 ppb	132.4 %
174Yb (KED)	0.004 ppb	19.9 %
175Lu (KED)	-0.009 ppb	27.9 %
205Tl (KED)	0.006 ppb	14.8 %
208Pb (KED)	0.410 ppb	3.5 %
209Bi (KED)	107.216 %	1.6 %
232Th (KED)	-0.073 ppb	66.0 %
238U (KED)	0.009 ppb	14.9 %

Category	Concentration average	Intensity average	Intensity RSD
6Li (KED)	105.596 %	1,447 cps	2.0 %
9Be (KED)	0.011 ppb	3 cps	100.0 %
11B (KED)	-2.205 ppb	423 cps	10.7 %
24Mg (KED)	102.476 ppb	65,560 cps	2.2 %
27Al (KED)	93.844 ppb	16,231 cps	3.2 %

Category	Concentration average	Intensity average	Intensity RSD
45Sc (KED)	103.896 %	27,262 cps	2.9 %
51V (KED)	0.171 ppb	1,696 cps	3.5 %
52Cr (KED)	1.125 ppb	16,973 cps	1.7 %
55Mn (KED)	3.116 ppb	24,578 cps	2.1 %
56Fe (KED)	119.773 ppb	1,658,825 cps	2.9 %
58Ni (KED)	0.637 ppb	13,116 cps	1.7 %
59Co (KED)	0.052 ppb	1,622 cps	7.6 %
63Cu (KED)	7.219 ppb	160,754 cps	2.5 %
64Zn (KED)	49.462 ppb	364,142 cps	0.9 %
69Ga (KED)	0.427 ppb	3,504 cps	1.2 %
75As (KED)	0.055 ppb	122 cps	1.6 %
80Se (KED)	-0.351 ppb	1,747 cps	1.3 %
85Rb (KED)	1.013 ppb	7,506 cps	1.9 %
88Sr (KED)	1.569 ppb	16,687 cps	2.1 %
89Y (KED)	105.696 %	250,881 cps	2.5 %
107Ag (KED)	0.439 ppb	26,392 cps	3.1 %
114Cd (KED)	0.013 ppb	1,129 cps	8.6 %
115In (KED)	105.495 %	458,100 cps	2.6 %
133Cs (KED)	0.013 ppb	663 cps	9.1 %
138Ba (KED)	1.517 ppb	74,889 cps	1.3 %
139La (KED)	0.091 ppb	9,553 cps	3.4 %
140Ce (KED)	0.350 ppb	46,267 cps	1.7 %
141Pr (KED)	0.021 ppb	3,323 cps	4.4 %
142Nd (KED)	0.168 ppb	9,515 cps	3.6 %
152Sm (KED)	0.014 ppb	798 cps	6.3 %
153Eu (KED)	0.002 ppb	442 cps	11.6 %
158Gd (KED)	0.013 ppb	937 cps	5.4 %
159Tb (KED)	108.370 %	2,204,016 cps	2.0 %
164Dy (KED)	0.009 ppb	807 cps	1.8 %
166Er (KED)	0.012 ppb	1,308 cps	8.3 %
169Tm (KED)	0.000 ppb	480 cps	27.2 %
174Yb (KED)	0.004 ppb	507 cps	15.5 %
175Lu (KED)	-0.009 ppb	10,959 cps	4.4 %
205Tl (KED)	0.006 ppb	1,456 cps	13.4 %
208Pb (KED)	0.410 ppb	94,040 cps	0.7 %
209Bi (KED)	107.216 %	1,943,931 cps	1.6 %
232Th (KED)	-0.073 ppb	29,471 cps	48.5 %
238U (KED)	0.009 ppb	3,184 cps	14.8 %

Sample Summary

Instrument ID: iCAP Q

Analysis index: 7

Analysis name: w7ti

Analysis started at: 10/12/2021 3:14:12 PM

User name: WINDOWS-UPCI4ER\Administrator

Category	Concentration average	Concentration RSD
6Li (KED)	111.517 %	4.9 %
9Be (KED)	0.010 ppb	156.6 %
11B (KED)	-0.608 ppb	90.1 %
24Mg (KED)	197.637 ppb	3.8 %
27Al (KED)	173.628 ppb	1.0 %
45Sc (KED)	106.696 %	1.2 %
51V (KED)	0.344 ppb	1.8 %
52Cr (KED)	1.109 ppb	1.2 %
55Mn (KED)	6.256 ppb	1.1 %
56Fe (KED)	215.409 ppb	1.5 %
58Ni (KED)	0.944 ppb	1.5 %
59Co (KED)	0.096 ppb	0.9 %
63Cu (KED)	7.190 ppb	0.1 %
64Zn (KED)	62.030 ppb	0.9 %
69Ga (KED)	0.713 ppb	3.8 %
75As (KED)	0.097 ppb	18.2 %
80Se (KED)	-0.249 ppb	19.9 %
85Rb (KED)	1.205 ppb	1.2 %
88Sr (KED)	2.841 ppb	0.8 %
89Y (KED)	109.847 %	1.1 %
107Ag (KED)	0.449 ppb	1.6 %
114Cd (KED)	0.026 ppb	11.2 %
115In (KED)	107.765 %	1.1 %
133Cs (KED)	0.029 ppb	4.6 %
138Ba (KED)	2.555 ppb	1.0 %
139La (KED)	0.164 ppb	1.9 %
140Ce (KED)	0.660 ppb	1.4 %
141Pr (KED)	0.040 ppb	1.5 %
142Nd (KED)	0.317 ppb	1.0 %
152Sm (KED)	0.031 ppb	5.7 %
153Eu (KED)	0.004 ppb	5.1 %
158Gd (KED)	0.028 ppb	7.8 %
159Tb (KED)	113.746 %	2.4 %
164Dy (KED)	0.019 ppb	2.1 %
166Er (KED)	0.021 ppb	4.1 %
169Tm (KED)	0.000 ppb	40.0 %
174Yb (KED)	0.007 ppb	14.5 %
175Lu (KED)	-0.011 ppb	8.8 %
205Tl (KED)	0.005 ppb	3.9 %
208Pb (KED)	0.884 ppb	0.9 %
209Bi (KED)	108.636 %	0.8 %
232Th (KED)	-0.116 ppb	1.9 %
238U (KED)	0.011 ppb	3.7 %

Category	Concentration average	Intensity average	Intensity RSD
6Li (KED)	111.517 %	1,528 cps	4.9 %
9Be (KED)	0.010 ppb	3 cps	100.0 %
11B (KED)	-0.608 ppb	608 cps	13.4 %
24Mg (KED)	197.637 ppb	133,192 cps	1.2 %
27Al (KED)	173.628 ppb	30,701 cps	1.3 %

Category	Concentration average	Intensity average	Intensity RSD
45Sc (KED)	106.696 %	27,997 cps	1.2 %
51V (KED)	0.344 ppb	3,474 cps	2.8 %
52Cr (KED)	1.109 ppb	17,182 cps	1.7 %
55Mn (KED)	6.256 ppb	50,577 cps	0.9 %
56Fe (KED)	215.409 ppb	3,060,711 cps	0.2 %
58Ni (KED)	0.944 ppb	19,098 cps	0.7 %
59Co (KED)	0.096 ppb	2,965 cps	0.4 %
63Cu (KED)	7.190 ppb	166,417 cps	1.0 %
64Zn (KED)	62.030 ppb	474,007 cps	1.0 %
69Ga (KED)	0.713 ppb	6,003 cps	3.0 %
75As (KED)	0.097 ppb	217 cps	16.3 %
80Se (KED)	-0.249 ppb	1,891 cps	2.6 %
85Rb (KED)	1.205 ppb	9,275 cps	2.1 %
88Sr (KED)	2.841 ppb	31,219 cps	1.5 %
89Y (KED)	109.847 %	260,732 cps	1.1 %
107Ag (KED)	0.449 ppb	27,587 cps	2.1 %
114Cd (KED)	0.026 ppb	1,492 cps	4.8 %
115In (KED)	107.765 %	467,955 cps	1.1 %
133Cs (KED)	0.029 ppb	1,242 cps	3.0 %
138Ba (KED)	2.555 ppb	130,964 cps	2.5 %
139La (KED)	0.164 ppb	17,862 cps	1.1 %
140Ce (KED)	0.660 ppb	91,131 cps	1.2 %
141Pr (KED)	0.040 ppb	6,160 cps	1.9 %
142Nd (KED)	0.317 ppb	18,655 cps	1.8 %
152Sm (KED)	0.031 ppb	1,689 cps	3.1 %
153Eu (KED)	0.004 ppb	677 cps	5.5 %
158Gd (KED)	0.028 ppb	1,981 cps	4.9 %
159Tb (KED)	113.746 %	2,313,350 cps	2.4 %
164Dy (KED)	0.019 ppb	1,566 cps	2.7 %
166Er (KED)	0.021 ppb	2,222 cps	1.2 %
169Tm (KED)	0.000 ppb	490 cps	5.8 %
174Yb (KED)	0.007 ppb	830 cps	13.7 %
175Lu (KED)	-0.011 ppb	10,960 cps	2.8 %
205Tl (KED)	0.005 ppb	1,208 cps	3.1 %
208Pb (KED)	0.884 ppb	162,881 cps	0.2 %
209Bi (KED)	108.636 %	1,969,664 cps	0.8 %
232Th (KED)	-0.116 ppb	17,379 cps	4.4 %
238U (KED)	0.011 ppb	4,032 cps	2.7 %

Sample Summary

Instrument ID: iCAP Q

Analysis index: 8

Analysis name: 27ti

Analysis started at: 10/12/2021 3:18:47 PM

User name: WINDOWS-UPCI4ER\Administrator

Category	Concentration average	Concentration RSD
6Li (KED)	123.197 %	3.9 %
9Be (KED)	0.018 ppb	166.3 %
11B (KED)	1.581 ppb	37.3 %
24Mg (KED)	220.034 ppb	4.0 %
27Al (KED)	284.557 ppb	0.8 %
45Sc (KED)	115.801 %	1.6 %
51V (KED)	0.509 ppb	2.4 %
52Cr (KED)	1.308 ppb	1.8 %
55Mn (KED)	8.162 ppb	1.2 %
56Fe (KED)	325.541 ppb	0.2 %
58Ni (KED)	1.392 ppb	0.6 %
59Co (KED)	0.123 ppb	1.1 %
63Cu (KED)	5.309 ppb	1.0 %
64Zn (KED)	51.374 ppb	1.8 %
69Ga (KED)	1.070 ppb	2.2 %
75As (KED)	0.101 ppb	10.2 %
80Se (KED)	-0.372 ppb	21.3 %
85Rb (KED)	1.130 ppb	2.6 %
88Sr (KED)	3.332 ppb	2.0 %
89Y (KED)	118.449 %	0.4 %
107Ag (KED)	0.306 ppb	3.7 %
114Cd (KED)	-0.014 ppb	13.1 %
115In (KED)	116.266 %	1.9 %
133Cs (KED)	0.043 ppb	2.5 %
138Ba (KED)	3.836 ppb	1.3 %
139La (KED)	0.288 ppb	1.5 %
140Ce (KED)	0.977 ppb	1.6 %
141Pr (KED)	0.067 ppb	1.9 %
142Nd (KED)	0.492 ppb	3.5 %
152Sm (KED)	0.046 ppb	2.9 %
153Eu (KED)	0.008 ppb	6.8 %
158Gd (KED)	0.042 ppb	3.5 %
159Tb (KED)	120.577 %	0.5 %
164Dy (KED)	0.029 ppb	5.8 %
166Er (KED)	0.027 ppb	2.1 %
169Tm (KED)	0.001 ppb	11.9 %
174Yb (KED)	0.012 ppb	0.2 %
175Lu (KED)	-0.014 ppb	7.8 %
205Tl (KED)	0.003 ppb	0.8 %
208Pb (KED)	0.183 ppb	6.0 %
209Bi (KED)	117.555 %	1.1 %
232Th (KED)	-0.093 ppb	1.4 %
238U (KED)	0.015 ppb	3.7 %

Category	Concentration average	Intensity average	Intensity RSD
6Li (KED)	123.197 %	1,688 cps	3.9 %
9Be (KED)	0.018 ppb	6 cps	124.9 %
11B (KED)	1.581 ppb	910 cps	3.3 %
24Mg (KED)	220.034 ppb	163,820 cps	1.2 %
27Al (KED)	284.557 ppb	54,499 cps	1.7 %

Category	Concentration average	Intensity average	Intensity RSD
45Sc (KED)	115.801 %	30,386 cps	1.6 %
51V (KED)	0.509 ppb	5,560 cps	3.2 %
52Cr (KED)	1.308 ppb	21,963 cps	2.0 %
55Mn (KED)	8.162 ppb	71,572 cps	0.4 %
56Fe (KED)	325.541 ppb	5,018,842 cps	1.5 %
58Ni (KED)	1.392 ppb	29,630 cps	1.2 %
59Co (KED)	0.123 ppb	4,085 cps	2.5 %
63Cu (KED)	5.309 ppb	132,824 cps	1.4 %
64Zn (KED)	51.374 ppb	423,859 cps	1.8 %
69Ga (KED)	1.070 ppb	9,640 cps	2.3 %
75As (KED)	0.101 ppb	243 cps	9.9 %
80Se (KED)	-0.372 ppb	1,941 cps	3.0 %
85Rb (KED)	1.130 ppb	9,382 cps	2.7 %
88Sr (KED)	3.332 ppb	39,436 cps	1.7 %
89Y (KED)	118.449 %	281,150 cps	0.4 %
107Ag (KED)	0.306 ppb	20,516 cps	2.7 %
114Cd (KED)	-0.014 ppb	522 cps	10.7 %
115In (KED)	116.266 %	504,874 cps	1.9 %
133Cs (KED)	0.043 ppb	1,911 cps	3.7 %
138Ba (KED)	3.836 ppb	207,321 cps	1.4 %
139La (KED)	0.288 ppb	32,860 cps	1.9 %
140Ce (KED)	0.977 ppb	142,759 cps	2.0 %
141Pr (KED)	0.067 ppb	10,797 cps	2.2 %
142Nd (KED)	0.492 ppb	30,578 cps	3.1 %
152Sm (KED)	0.046 ppb	2,614 cps	3.2 %
153Eu (KED)	0.008 ppb	1,067 cps	4.9 %
158Gd (KED)	0.042 ppb	3,108 cps	2.9 %
159Tb (KED)	120.577 %	2,452,278 cps	0.5 %
164Dy (KED)	0.029 ppb	2,456 cps	5.7 %
166Er (KED)	0.027 ppb	2,900 cps	2.0 %
169Tm (KED)	0.001 ppb	641 cps	4.2 %
174Yb (KED)	0.012 ppb	1,455 cps	0.4 %
175Lu (KED)	-0.014 ppb	11,017 cps	2.1 %
205Tl (KED)	0.003 ppb	1,061 cps	0.8 %
208Pb (KED)	0.183 ppb	68,029 cps	3.3 %
209Bi (KED)	117.555 %	2,131,385 cps	1.1 %
232Th (KED)	-0.093 ppb	26,148 cps	0.5 %
238U (KED)	0.015 ppb	5,631 cps	2.7 %

Sample Summary

Instrument ID: iCAP Q

Analysis index: 9

Analysis name: 00089ti

Analysis started at: 10/12/2021 3:23:07 PM

User name: WINDOWS-UPCI4ER\Administrator

Category	Concentration average	Concentration RSD
6Li (KED)	123.846 %	1.9 %
9Be (KED)	-0.001 ppb	841.5 %
11B (KED)	2.439 ppb	21.1 %
24Mg (KED)	240.346 ppb	2.4 %
27Al (KED)	190.688 ppb	1.6 %
45Sc (KED)	116.599 %	0.7 %
51V (KED)	0.387 ppb	2.4 %
52Cr (KED)	1.161 ppb	0.5 %
55Mn (KED)	7.340 ppb	1.9 %
56Fe (KED)	241.841 ppb	0.3 %
58Ni (KED)	1.023 ppb	1.1 %
59Co (KED)	0.095 ppb	4.3 %
63Cu (KED)	7.098 ppb	0.7 %
64Zn (KED)	51.357 ppb	2.0 %
69Ga (KED)	0.851 ppb	2.2 %
75As (KED)	0.103 ppb	8.2 %
80Se (KED)	-0.444 ppb	15.4 %
85Rb (KED)	1.576 ppb	2.0 %
88Sr (KED)	3.337 ppb	2.0 %
89Y (KED)	118.451 %	1.3 %
107Ag (KED)	0.389 ppb	2.6 %
114Cd (KED)	0.023 ppb	5.8 %
115In (KED)	115.182 %	1.4 %
133Cs (KED)	0.030 ppb	12.5 %
138Ba (KED)	2.948 ppb	1.3 %
139La (KED)	0.189 ppb	1.3 %
140Ce (KED)	0.841 ppb	20.3 %
141Pr (KED)	0.043 ppb	1.4 %
142Nd (KED)	0.356 ppb	0.8 %
152Sm (KED)	0.032 ppb	5.3 %
153Eu (KED)	0.005 ppb	11.7 %
158Gd (KED)	0.030 ppb	3.9 %
159Tb (KED)	120.252 %	0.8 %
164Dy (KED)	0.020 ppb	1.9 %
166Er (KED)	0.024 ppb	5.6 %
169Tm (KED)	0.000 ppb	180.0 %
174Yb (KED)	0.007 ppb	6.4 %
175Lu (KED)	-0.013 ppb	10.2 %
205Tl (KED)	0.004 ppb	3.7 %
208Pb (KED)	0.570 ppb	0.6 %
209Bi (KED)	115.823 %	0.4 %
232Th (KED)	-0.113 ppb	0.8 %
238U (KED)	0.013 ppb	3.1 %

Category	Concentration average	Intensity average	Intensity RSD
6Li (KED)	123.846 %	1,697 cps	1.9 %
9Be (KED)	-0.001 ppb	1 cps	173.2 %
11B (KED)	2.439 ppb	1,011 cps	4.0 %
24Mg (KED)	240.346 ppb	179,989 cps	0.7 %
27Al (KED)	190.688 ppb	36,829 cps	1.2 %

Category	Concentration average	Intensity average	Intensity RSD
45Sc (KED)	116.599 %	30,595 cps	0.7 %
51V (KED)	0.387 ppb	4,261 cps	1.7 %
52Cr (KED)	1.161 ppb	19,658 cps	0.5 %
55Mn (KED)	7.340 ppb	64,825 cps	1.8 %
56Fe (KED)	241.841 ppb	3,755,132 cps	0.4 %
58Ni (KED)	1.023 ppb	22,452 cps	0.5 %
59Co (KED)	0.095 ppb	3,199 cps	4.7 %
63Cu (KED)	7.098 ppb	177,196 cps	1.6 %
64Zn (KED)	51.357 ppb	423,765 cps	3.0 %
69Ga (KED)	0.851 ppb	7,696 cps	2.8 %
75As (KED)	0.103 ppb	248 cps	8.1 %
80Se (KED)	-0.444 ppb	1,883 cps	2.7 %
85Rb (KED)	1.576 ppb	13,070 cps	0.9 %
88Sr (KED)	3.337 ppb	39,492 cps	1.4 %
89Y (KED)	118.451 %	281,155 cps	1.3 %
107Ag (KED)	0.389 ppb	25,611 cps	1.3 %
114Cd (KED)	0.023 ppb	1,509 cps	3.5 %
115In (KED)	115.182 %	500,166 cps	1.4 %
133Cs (KED)	0.030 ppb	1,375 cps	11.9 %
138Ba (KED)	2.948 ppb	159,438 cps	0.5 %
139La (KED)	0.189 ppb	21,647 cps	1.3 %
140Ce (KED)	0.841 ppb	122,746 cps	21.0 %
141Pr (KED)	0.043 ppb	7,085 cps	1.6 %
142Nd (KED)	0.356 ppb	22,130 cps	0.6 %
152Sm (KED)	0.032 ppb	1,889 cps	5.1 %
153Eu (KED)	0.005 ppb	777 cps	7.6 %
158Gd (KED)	0.030 ppb	2,244 cps	3.1 %
159Tb (KED)	120.252 %	2,445,666 cps	0.8 %
164Dy (KED)	0.020 ppb	1,775 cps	2.5 %
166Er (KED)	0.024 ppb	2,639 cps	5.6 %
169Tm (KED)	0.000 ppb	452 cps	9.6 %
174Yb (KED)	0.007 ppb	960 cps	4.8 %
175Lu (KED)	-0.013 ppb	11,315 cps	1.7 %
205Tl (KED)	0.004 ppb	1,122 cps	2.4 %
208Pb (KED)	0.570 ppb	125,903 cps	0.8 %
209Bi (KED)	115.823 %	2,099,970 cps	0.4 %
232Th (KED)	-0.113 ppb	19,630 cps	1.5 %
238U (KED)	0.013 ppb	4,729 cps	3.0 %

Sample Summary

Instrument ID: iCAP Q

Analysis index: 10

Analysis name: 21ti

Analysis started at: 10/12/2021 3:27:21 PM

User name: WINDOWS-UPCI4ER\Administrator

Category	Concentration average	Concentration RSD
6Li (KED)	117.195 %	5.0 %
9Be (KED)	-0.001 ppb	1,703.1 %
11B (KED)	-0.560 ppb	133.8 %
24Mg (KED)	218.685 ppb	10.3 %
27Al (KED)	288.439 ppb	2.4 %
45Sc (KED)	111.747 %	6.1 %
51V (KED)	0.530 ppb	2.4 %
52Cr (KED)	1.539 ppb	2.7 %
55Mn (KED)	7.693 ppb	2.4 %
56Fe (KED)	309.387 ppb	1.3 %
58Ni (KED)	1.249 ppb	3.0 %
59Co (KED)	0.124 ppb	4.3 %
63Cu (KED)	8.390 ppb	1.6 %
64Zn (KED)	53.225 ppb	1.5 %
69Ga (KED)	1.044 ppb	2.4 %
75As (KED)	0.121 ppb	10.5 %
80Se (KED)	-0.204 ppb	7.0 %
85Rb (KED)	1.542 ppb	3.6 %
88Sr (KED)	3.399 ppb	0.3 %
89Y (KED)	109.624 %	3.0 %
107Ag (KED)	0.249 ppb	2.2 %
114Cd (KED)	-0.014 ppb	8.6 %
115In (KED)	105.921 %	3.4 %
133Cs (KED)	0.043 ppb	2.4 %
138Ba (KED)	3.501 ppb	0.9 %
139La (KED)	0.287 ppb	1.4 %
140Ce (KED)	1.043 ppb	4.4 %
141Pr (KED)	0.066 ppb	1.4 %
142Nd (KED)	0.504 ppb	2.4 %
152Sm (KED)	0.048 ppb	2.3 %
153Eu (KED)	0.007 ppb	8.8 %
158Gd (KED)	0.042 ppb	3.2 %
159Tb (KED)	112.121 %	3.0 %
164Dy (KED)	0.029 ppb	1.2 %
166Er (KED)	0.025 ppb	9.1 %
169Tm (KED)	0.001 ppb	16.0 %
174Yb (KED)	0.011 ppb	6.6 %
175Lu (KED)	-0.015 ppb	10.2 %
205Tl (KED)	0.003 ppb	3.3 %
208Pb (KED)	0.147 ppb	4.5 %
209Bi (KED)	106.272 %	3.3 %
232Th (KED)	-0.097 ppb	1.9 %
238U (KED)	0.015 ppb	4.2 %

Category	Concentration average	Intensity average	Intensity RSD
6Li (KED)	117.195 %	1,606 cps	5.0 %
9Be (KED)	-0.001 ppb	1 cps	173.2 %
11B (KED)	-0.560 ppb	640 cps	8.1 %
24Mg (KED)	218.685 ppb	154,516 cps	5.1 %
27Al (KED)	288.439 ppb	53,302 cps	6.3 %

Category	Concentration average	Intensity average	Intensity RSD
45Sc (KED)	111.747 %	29,322 cps	6.1 %
51V (KED)	0.530 ppb	5,575 cps	3.7 %
52Cr (KED)	1.539 ppb	24,904 cps	4.1 %
55Mn (KED)	7.693 ppb	65,048 cps	3.6 %
56Fe (KED)	309.387 ppb	4,600,674 cps	4.7 %
58Ni (KED)	1.249 ppb	25,838 cps	3.9 %
59Co (KED)	0.124 ppb	3,964 cps	2.3 %
63Cu (KED)	8.390 ppb	193,598 cps	2.6 %
64Zn (KED)	53.225 ppb	406,232 cps	2.2 %
69Ga (KED)	1.044 ppb	8,713 cps	4.9 %
75As (KED)	0.121 ppb	267 cps	9.9 %
80Se (KED)	-0.204 ppb	1,920 cps	2.9 %
85Rb (KED)	1.542 ppb	11,839 cps	4.6 %
88Sr (KED)	3.399 ppb	37,226 cps	2.7 %
89Y (KED)	109.624 %	260,205 cps	3.0 %
107Ag (KED)	0.249 ppb	15,343 cps	2.1 %
114Cd (KED)	-0.014 ppb	480 cps	3.7 %
115In (KED)	105.921 %	459,952 cps	3.4 %
133Cs (KED)	0.043 ppb	1,737 cps	5.5 %
138Ba (KED)	3.501 ppb	176,164 cps	3.9 %
139La (KED)	0.287 ppb	30,494 cps	4.3 %
140Ce (KED)	1.043 ppb	141,750 cps	6.1 %
141Pr (KED)	0.066 ppb	9,892 cps	4.3 %
142Nd (KED)	0.504 ppb	29,139 cps	1.5 %
152Sm (KED)	0.048 ppb	2,556 cps	5.1 %
153Eu (KED)	0.007 ppb	963 cps	4.4 %
158Gd (KED)	0.042 ppb	2,891 cps	4.4 %
159Tb (KED)	112.121 %	2,280,288 cps	3.0 %
164Dy (KED)	0.029 ppb	2,300 cps	3.5 %
166Er (KED)	0.025 ppb	2,592 cps	10.4 %
169Tm (KED)	0.001 ppb	634 cps	8.7 %
174Yb (KED)	0.011 ppb	1,288 cps	4.2 %
175Lu (KED)	-0.015 ppb	10,212 cps	4.7 %
205Tl (KED)	0.003 ppb	842 cps	2.7 %
208Pb (KED)	0.147 ppb	56,582 cps	4.0 %
209Bi (KED)	106.272 %	1,926,814 cps	3.3 %
232Th (KED)	-0.097 ppb	22,432 cps	3.2 %
238U (KED)	0.015 ppb	5,121 cps	2.2 %

Sample Summary

Instrument ID: iCAP Q

Analysis index: 11

Analysis name: 6ti

Analysis started at: 10/12/2021 3:31:54 PM

User name: WINDOWS-UPCI4ER\Administrator

Category	Concentration average	Concentration RSD
6Li (KED)	112.977 %	2.5 %
9Be (KED)	-0.006 ppb	0.0 %
11B (KED)	-1.287 ppb	12.5 %
24Mg (KED)	128.098 ppb	2.5 %
27Al (KED)	132.703 ppb	0.9 %
45Sc (KED)	110.257 %	1.9 %
51V (KED)	0.235 ppb	2.9 %
52Cr (KED)	0.973 ppb	0.7 %
55Mn (KED)	4.090 ppb	1.0 %
56Fe (KED)	155.852 ppb	1.1 %
58Ni (KED)	0.766 ppb	1.4 %
59Co (KED)	0.086 ppb	4.1 %
63Cu (KED)	20.202 ppb	0.6 %
64Zn (KED)	53.429 ppb	0.9 %
69Ga (KED)	0.580 ppb	0.5 %
75As (KED)	0.087 ppb	12.4 %
80Se (KED)	0.024 ppb	277.0 %
85Rb (KED)	0.869 ppb	1.7 %
88Sr (KED)	2.019 ppb	1.2 %
89Y (KED)	108.703 %	0.9 %
107Ag (KED)	0.661 ppb	4.0 %
114Cd (KED)	-0.017 ppb	3.9 %
115In (KED)	105.699 %	1.4 %
133Cs (KED)	0.020 ppb	1.4 %
138Ba (KED)	2.051 ppb	0.1 %
139La (KED)	0.140 ppb	1.5 %
140Ce (KED)	0.694 ppb	1.5 %
141Pr (KED)	0.030 ppb	0.6 %
142Nd (KED)	0.306 ppb	4.1 %
152Sm (KED)	0.022 ppb	5.9 %
153Eu (KED)	0.003 ppb	4.2 %
158Gd (KED)	0.019 ppb	1.3 %
159Tb (KED)	111.163 %	0.2 %
164Dy (KED)	0.013 ppb	1.9 %
166Er (KED)	0.021 ppb	6.6 %
169Tm (KED)	0.000 ppb	12.5 %
174Yb (KED)	0.005 ppb	12.5 %
175Lu (KED)	-0.018 ppb	11.3 %
205Tl (KED)	0.001 ppb	8.0 %
208Pb (KED)	0.055 ppb	17.7 %
209Bi (KED)	105.078 %	1.6 %
232Th (KED)	-0.136 ppb	1.1 %
238U (KED)	0.010 ppb	5.0 %

Category	Concentration average	Intensity average	Intensity RSD
6Li (KED)	112.977 %	1,548 cps	2.5 %
9Be (KED)	-0.006 ppb	0 cps	
11B (KED)	-1.287 ppb	546 cps	4.4 %
24Mg (KED)	128.098 ppb	87,619 cps	0.6 %
27Al (KED)	132.703 ppb	24,286 cps	1.7 %

Category	Concentration average	Intensity average	Intensity RSD
45Sc (KED)	110.257 %	28,931 cps	1.9 %
51V (KED)	0.235 ppb	2,467 cps	4.5 %
52Cr (KED)	0.973 ppb	15,610 cps	2.4 %
55Mn (KED)	4.090 ppb	34,204 cps	0.9 %
56Fe (KED)	155.852 ppb	2,289,349 cps	0.9 %
58Ni (KED)	0.766 ppb	16,371 cps	2.2 %
59Co (KED)	0.086 ppb	2,764 cps	2.0 %
63Cu (KED)	20.202 ppb	460,824 cps	0.7 %
64Zn (KED)	53.429 ppb	404,438 cps	1.5 %
69Ga (KED)	0.580 ppb	4,850 cps	1.2 %
75As (KED)	0.087 ppb	193 cps	11.9 %
80Se (KED)	0.024 ppb	2,071 cps	3.2 %
85Rb (KED)	0.869 ppb	6,630 cps	2.0 %
88Sr (KED)	2.019 ppb	22,017 cps	0.9 %
89Y (KED)	108.703 %	258,018 cps	0.9 %
107Ag (KED)	0.661 ppb	39,418 cps	3.4 %
114Cd (KED)	-0.017 ppb	398 cps	5.5 %
115In (KED)	105.699 %	458,987 cps	1.4 %
133Cs (KED)	0.020 ppb	907 cps	2.3 %
138Ba (KED)	2.051 ppb	103,152 cps	0.3 %
139La (KED)	0.140 ppb	14,938 cps	1.6 %
140Ce (KED)	0.694 ppb	93,647 cps	1.3 %
141Pr (KED)	0.030 ppb	4,670 cps	0.8 %
142Nd (KED)	0.306 ppb	17,615 cps	4.2 %
152Sm (KED)	0.022 ppb	1,202 cps	5.2 %
153Eu (KED)	0.003 ppb	533 cps	2.3 %
158Gd (KED)	0.019 ppb	1,398 cps	1.0 %
159Tb (KED)	111.163 %	2,260,805 cps	0.2 %
164Dy (KED)	0.013 ppb	1,124 cps	1.8 %
166Er (KED)	0.021 ppb	2,165 cps	5.4 %
169Tm (KED)	0.000 ppb	269 cps	6.1 %
174Yb (KED)	0.005 ppb	633 cps	9.8 %
175Lu (KED)	-0.018 ppb	9,488 cps	4.1 %
205Tl (KED)	0.001 ppb	502 cps	2.1 %
208Pb (KED)	0.055 ppb	43,238 cps	1.6 %
209Bi (KED)	105.078 %	1,905,166 cps	1.6 %
232Th (KED)	-0.136 ppb	11,226 cps	2.9 %
238U (KED)	0.010 ppb	3,473 cps	2.9 %

Sample Summary

Instrument ID: iCAP Q

Analysis index: 12

Analysis name: 01963ti

Analysis started at: 10/12/2021 3:36:13 PM

User name: WINDOWS-UPCI4ER\Administrator

Category	Concentration average	Concentration RSD
6Li (KED)	129.361 %	3.3 %
9Be (KED)	0.004 ppb	235.3 %
11B (KED)	-1.605 ppb	27.0 %
24Mg (KED)	109.260 ppb	3.6 %
27Al (KED)	113.872 ppb	0.7 %
45Sc (KED)	119.905 %	0.8 %
51V (KED)	0.209 ppb	6.8 %
52Cr (KED)	0.788 ppb	2.3 %
55Mn (KED)	3.458 ppb	1.0 %
56Fe (KED)	144.060 ppb	0.9 %
58Ni (KED)	0.728 ppb	1.6 %
59Co (KED)	0.056 ppb	2.6 %
63Cu (KED)	10.785 ppb	0.2 %
64Zn (KED)	52.675 ppb	1.5 %
69Ga (KED)	0.510 ppb	2.3 %
75As (KED)	0.055 ppb	5.3 %
80Se (KED)	-0.335 ppb	6.1 %
85Rb (KED)	1.218 ppb	2.4 %
88Sr (KED)	1.697 ppb	1.4 %
89Y (KED)	120.906 %	0.8 %
107Ag (KED)	0.522 ppb	1.6 %
114Cd (KED)	0.009 ppb	30.3 %
115In (KED)	116.734 %	2.2 %
133Cs (KED)	0.015 ppb	3.9 %
138Ba (KED)	1.776 ppb	1.2 %
139La (KED)	0.117 ppb	2.0 %
140Ce (KED)	0.824 ppb	1.0 %
141Pr (KED)	0.026 ppb	2.4 %
142Nd (KED)	0.334 ppb	1.7 %
152Sm (KED)	0.017 ppb	2.1 %
153Eu (KED)	0.001 ppb	19.2 %
158Gd (KED)	0.017 ppb	12.9 %
159Tb (KED)	122.933 %	1.1 %
164Dy (KED)	0.012 ppb	4.6 %
166Er (KED)	0.029 ppb	5.5 %
169Tm (KED)	-0.001 ppb	12.6 %
174Yb (KED)	0.003 ppb	12.2 %
175Lu (KED)	-0.018 ppb	6.4 %
205Tl (KED)	0.001 ppb	21.2 %
208Pb (KED)	0.355 ppb	5.2 %
209Bi (KED)	117.705 %	0.7 %
232Th (KED)	-0.141 ppb	0.5 %
238U (KED)	0.009 ppb	2.7 %

Category	Concentration average	Intensity average	Intensity RSD
6Li (KED)	129.361 %	1,772 cps	3.3 %
9Be (KED)	0.004 ppb	2 cps	86.6 %
11B (KED)	-1.605 ppb	587 cps	5.4 %
24Mg (KED)	109.260 ppb	85,582 cps	0.6 %
27Al (KED)	113.872 ppb	22,689 cps	0.7 %

Category	Concentration average	Intensity average	Intensity RSD
45Sc (KED)	119.905 %	31,463 cps	0.8 %
51V (KED)	0.209 ppb	2,384 cps	6.1 %
52Cr (KED)	0.788 ppb	13,765 cps	2.8 %
55Mn (KED)	3.458 ppb	31,469 cps	0.5 %
56Fe (KED)	144.060 ppb	2,302,018 cps	1.6 %
58Ni (KED)	0.728 ppb	17,008 cps	1.3 %
59Co (KED)	0.056 ppb	2,011 cps	3.2 %
63Cu (KED)	10.785 ppb	274,179 cps	0.6 %
64Zn (KED)	52.675 ppb	443,493 cps	0.7 %
69Ga (KED)	0.510 ppb	4,763 cps	2.2 %
75As (KED)	0.055 ppb	141 cps	5.5 %
80Se (KED)	-0.335 ppb	2,011 cps	1.6 %
85Rb (KED)	1.218 ppb	10,321 cps	2.3 %
88Sr (KED)	1.697 ppb	20,634 cps	0.7 %
89Y (KED)	120.906 %	286,983 cps	0.8 %
107Ag (KED)	0.522 ppb	34,542 cps	2.0 %
114Cd (KED)	0.009 ppb	1,147 cps	4.3 %
115In (KED)	116.734 %	506,905 cps	2.2 %
133Cs (KED)	0.015 ppb	820 cps	2.3 %
138Ba (KED)	1.776 ppb	99,100 cps	1.7 %
139La (KED)	0.117 ppb	13,928 cps	2.7 %
140Ce (KED)	0.824 ppb	122,803 cps	1.0 %
141Pr (KED)	0.026 ppb	4,473 cps	1.8 %
142Nd (KED)	0.334 ppb	21,259 cps	1.1 %
152Sm (KED)	0.017 ppb	1,081 cps	2.0 %
153Eu (KED)	0.001 ppb	410 cps	7.8 %
158Gd (KED)	0.017 ppb	1,358 cps	10.7 %
159Tb (KED)	122.933 %	2,500,186 cps	1.1 %
164Dy (KED)	0.012 ppb	1,157 cps	3.5 %
166Er (KED)	0.029 ppb	3,217 cps	4.3 %
169Tm (KED)	-0.001 ppb	228 cps	10.6 %
174Yb (KED)	0.003 ppb	529 cps	7.8 %
175Lu (KED)	-0.018 ppb	10,497 cps	2.1 %
205Tl (KED)	0.001 ppb	633 cps	11.1 %
208Pb (KED)	0.355 ppb	94,724 cps	2.7 %
209Bi (KED)	117.705 %	2,134,095 cps	0.7 %
232Th (KED)	-0.141 ppb	11,225 cps	2.5 %
238U (KED)	0.009 ppb	3,459 cps	2.9 %

Sample Summary

Instrument ID: iCAP Q

Analysis index: 13

Analysis name: 01965ti

Analysis started at: 10/12/2021 3:40:28 PM

User name: WINDOWS-UPCI4ER\Administrator

Category	Concentration average	Concentration RSD
6Li (KED)	125.549 %	1.9 %
9Be (KED)	0.019 ppb	44.4 %
11B (KED)	-0.434 ppb	182.2 %
24Mg (KED)	285.206 ppb	1.7 %
27Al (KED)	330.380 ppb	1.6 %
45Sc (KED)	120.708 %	1.3 %
51V (KED)	0.633 ppb	2.5 %
52Cr (KED)	1.014 ppb	3.0 %
55Mn (KED)	10.732 ppb	1.6 %
56Fe (KED)	410.712 ppb	2.2 %
58Ni (KED)	1.713 ppb	2.3 %
59Co (KED)	0.181 ppb	0.6 %
63Cu (KED)	4.933 ppb	0.5 %
64Zn (KED)	53.833 ppb	1.2 %
69Ga (KED)	1.262 ppb	0.6 %
75As (KED)	0.168 ppb	19.2 %
80Se (KED)	-0.304 ppb	32.7 %
85Rb (KED)	1.346 ppb	2.4 %
88Sr (KED)	4.454 ppb	0.1 %
89Y (KED)	120.006 %	0.8 %
107Ag (KED)	0.247 ppb	0.7 %
114Cd (KED)	0.018 ppb	13.2 %
115In (KED)	115.786 %	0.2 %
133Cs (KED)	0.052 ppb	3.2 %
138Ba (KED)	4.222 ppb	0.2 %
139La (KED)	0.337 ppb	0.5 %
140Ce (KED)	0.911 ppb	0.4 %
141Pr (KED)	0.082 ppb	1.2 %
142Nd (KED)	0.515 ppb	0.2 %
152Sm (KED)	0.063 ppb	3.6 %
153Eu (KED)	0.010 ppb	7.1 %
158Gd (KED)	0.054 ppb	6.2 %
159Tb (KED)	121.384 %	0.9 %
164Dy (KED)	0.039 ppb	4.4 %
166Er (KED)	0.024 ppb	3.5 %
169Tm (KED)	0.001 ppb	3.7 %
174Yb (KED)	0.015 ppb	3.9 %
175Lu (KED)	-0.015 ppb	4.8 %
205Tl (KED)	0.004 ppb	9.8 %
208Pb (KED)	0.482 ppb	0.9 %
209Bi (KED)	113.719 %	0.7 %
232Th (KED)	-0.075 ppb	1.6 %
238U (KED)	0.020 ppb	1.5 %

Category	Concentration average	Intensity average	Intensity RSD
6Li (KED)	125.549 %	1,720 cps	1.9 %
9Be (KED)	0.019 ppb	6 cps	34.6 %
11B (KED)	-0.434 ppb	703 cps	14.4 %
24Mg (KED)	285.206 ppb	216,486 cps	0.4 %
27Al (KED)	330.380 ppb	65,920 cps	0.8 %

Category	Concentration average	Intensity average	Intensity RSD
45Sc (KED)	120.708 %	31,673 cps	1.3 %
51V (KED)	0.633 ppb	7,199 cps	2.7 %
52Cr (KED)	1.014 ppb	17,785 cps	2.0 %
55Mn (KED)	10.732 ppb	98,057 cps	0.4 %
56Fe (KED)	410.712 ppb	6,598,147 cps	1.1 %
58Ni (KED)	1.713 ppb	37,533 cps	0.9 %
59Co (KED)	0.181 ppb	6,194 cps	1.2 %
63Cu (KED)	4.933 ppb	125,120 cps	0.4 %
64Zn (KED)	53.833 ppb	449,819 cps	1.0 %
69Ga (KED)	1.262 ppb	11,499 cps	0.8 %
75As (KED)	0.168 ppb	400 cps	17.9 %
80Se (KED)	-0.304 ppb	2,021 cps	4.1 %
85Rb (KED)	1.346 ppb	11,318 cps	1.7 %
88Sr (KED)	4.454 ppb	53,326 cps	0.8 %
89Y (KED)	120.006 %	284,846 cps	0.8 %
107Ag (KED)	0.247 ppb	16,669 cps	0.8 %
114Cd (KED)	0.018 ppb	1,378 cps	4.7 %
115In (KED)	115.786 %	502,789 cps	0.2 %
133Cs (KED)	0.052 ppb	2,234 cps	2.8 %
138Ba (KED)	4.222 ppb	229,500 cps	0.7 %
139La (KED)	0.337 ppb	38,720 cps	0.5 %
140Ce (KED)	0.911 ppb	134,127 cps	1.3 %
141Pr (KED)	0.082 ppb	13,214 cps	1.1 %
142Nd (KED)	0.515 ppb	32,236 cps	1.1 %
152Sm (KED)	0.063 ppb	3,571 cps	2.7 %
153Eu (KED)	0.010 ppb	1,339 cps	6.4 %
158Gd (KED)	0.054 ppb	4,007 cps	6.1 %
159Tb (KED)	121.384 %	2,468,675 cps	0.9 %
164Dy (KED)	0.039 ppb	3,336 cps	3.6 %
166Er (KED)	0.024 ppb	2,685 cps	4.0 %
169Tm (KED)	0.001 ppb	832 cps	2.7 %
174Yb (KED)	0.015 ppb	1,831 cps	3.9 %
175Lu (KED)	-0.015 ppb	10,913 cps	2.2 %
205Tl (KED)	0.004 ppb	1,066 cps	6.3 %
208Pb (KED)	0.482 ppb	110,403 cps	1.1 %
209Bi (KED)	113.719 %	2,061,828 cps	0.7 %
232Th (KED)	-0.075 ppb	30,692 cps	1.8 %
238U (KED)	0.020 ppb	7,093 cps	1.0 %

Sample Summary

Instrument ID: iCAP Q

Analysis index: 14

Analysis name: 1497jian

Analysis started at: 10/12/2021 3:44:38 PM

User name: WINDOWS-UPCI4ER\Administrator

Category	Concentration average	Concentration RSD
6Li (KED)	152.478 %	2.4 %
9Be (KED)	0.010 ppb	183.6 %
11B (KED)	3.448 ppb	5.7 %
24Mg (KED)	199.028 ppb	1.8 %
27Al (KED)	163.474 ppb	1.5 %
45Sc (KED)	145.073 %	2.1 %
51V (KED)	0.354 ppb	5.1 %
52Cr (KED)	0.977 ppb	0.5 %
55Mn (KED)	5.825 ppb	1.6 %
56Fe (KED)	195.460 ppb	0.6 %
58Ni (KED)	0.906 ppb	2.0 %
59Co (KED)	0.081 ppb	1.2 %
63Cu (KED)	5.099 ppb	1.6 %
64Zn (KED)	49.256 ppb	0.8 %
69Ga (KED)	0.669 ppb	1.1 %
75As (KED)	0.094 ppb	4.6 %
80Se (KED)	-0.799 ppb	14.8 %
85Rb (KED)	1.271 ppb	2.6 %
88Sr (KED)	2.798 ppb	0.5 %
89Y (KED)	144.713 %	1.2 %
107Ag (KED)	0.271 ppb	2.5 %
114Cd (KED)	-0.012 ppb	6.7 %
115In (KED)	140.734 %	1.6 %
133Cs (KED)	0.024 ppb	4.7 %
138Ba (KED)	2.378 ppb	2.1 %
139La (KED)	0.171 ppb	1.2 %
140Ce (KED)	0.588 ppb	5.6 %
141Pr (KED)	0.041 ppb	1.9 %
142Nd (KED)	0.294 ppb	1.9 %
152Sm (KED)	0.028 ppb	3.4 %
153Eu (KED)	0.003 ppb	9.8 %
158Gd (KED)	0.025 ppb	5.5 %
159Tb (KED)	146.541 %	1.3 %
164Dy (KED)	0.017 ppb	4.3 %
166Er (KED)	0.015 ppb	5.3 %
169Tm (KED)	0.000 ppb	314.9 %
174Yb (KED)	0.006 ppb	16.4 %
175Lu (KED)	-0.018 ppb	3.4 %
205Tl (KED)	0.002 ppb	18.1 %
208Pb (KED)	0.195 ppb	1.1 %
209Bi (KED)	137.840 %	2.0 %
232Th (KED)	-0.132 ppb	0.7 %
238U (KED)	0.011 ppb	4.2 %

Category	Concentration average	Intensity average	Intensity RSD
6Li (KED)	152.478 %	2,089 cps	2.4 %
9Be (KED)	0.010 ppb	4 cps	114.6 %
11B (KED)	3.448 ppb	1,383 cps	1.9 %
24Mg (KED)	199.028 ppb	183,566 cps	0.8 %
27Al (KED)	163.474 ppb	39,312 cps	1.8 %

Category	Concentration average	Intensity average	Intensity RSD
45Sc (KED)	145.073 %	38,067 cps	2.1 %
51V (KED)	0.354 ppb	4,849 cps	3.4 %
52Cr (KED)	0.977 ppb	20,620 cps	1.8 %
55Mn (KED)	5.825 ppb	64,027 cps	0.5 %
56Fe (KED)	195.460 ppb	3,776,814 cps	1.6 %
58Ni (KED)	0.906 ppb	25,009 cps	1.2 %
59Co (KED)	0.081 ppb	3,448 cps	1.6 %
63Cu (KED)	5.099 ppb	155,892 cps	1.8 %
64Zn (KED)	49.256 ppb	496,613 cps	0.6 %
69Ga (KED)	0.669 ppb	7,427 cps	0.7 %
75As (KED)	0.094 ppb	278 cps	3.9 %
80Se (KED)	-0.799 ppb	1,957 cps	6.7 %
85Rb (KED)	1.271 ppb	12,891 cps	1.9 %
88Sr (KED)	2.798 ppb	40,506 cps	1.2 %
89Y (KED)	144.713 %	343,490 cps	1.2 %
107Ag (KED)	0.271 ppb	22,114 cps	3.2 %
114Cd (KED)	-0.012 ppb	689 cps	2.7 %
115In (KED)	140.734 %	611,120 cps	1.6 %
133Cs (KED)	0.024 ppb	1,383 cps	2.4 %
138Ba (KED)	2.378 ppb	157,243 cps	2.4 %
139La (KED)	0.171 ppb	23,972 cps	1.2 %
140Ce (KED)	0.588 ppb	104,630 cps	4.6 %
141Pr (KED)	0.041 ppb	8,174 cps	2.0 %
142Nd (KED)	0.294 ppb	22,308 cps	2.2 %
152Sm (KED)	0.028 ppb	2,005 cps	2.0 %
153Eu (KED)	0.003 ppb	753 cps	7.3 %
158Gd (KED)	0.025 ppb	2,289 cps	5.3 %
159Tb (KED)	146.541 %	2,980,330 cps	1.3 %
164Dy (KED)	0.017 ppb	1,811 cps	3.6 %
166Er (KED)	0.015 ppb	2,142 cps	3.0 %
169Tm (KED)	0.000 ppb	482 cps	24.1 %
174Yb (KED)	0.006 ppb	1,033 cps	12.7 %
175Lu (KED)	-0.018 ppb	12,381 cps	2.5 %
205Tl (KED)	0.002 ppb	844 cps	10.1 %
208Pb (KED)	0.195 ppb	81,980 cps	2.4 %
209Bi (KED)	137.840 %	2,499,154 cps	2.0 %
232Th (KED)	-0.132 ppb	16,346 cps	1.7 %
238U (KED)	0.011 ppb	5,068 cps	1.8 %

Sample Summary

Instrument ID: iCAP Q

Analysis index: 15

Analysis name: 1373jian

Analysis started at: 10/12/2021 3:48:23 PM

User name: WINDOWS-UPCI4ER\Administrator

Category	Concentration average	Concentration RSD
6Li (KED)	143.637 %	2.0 %
9Be (KED)	0.007 ppb	190.1 %
11B (KED)	-2.594 ppb	11.3 %
24Mg (KED)	269.765 ppb	1.0 %
27Al (KED)	255.860 ppb	0.8 %
45Sc (KED)	138.061 %	1.4 %
51V (KED)	0.526 ppb	11.6 %
52Cr (KED)	1.135 ppb	1.5 %
55Mn (KED)	8.534 ppb	0.7 %
56Fe (KED)	381.168 ppb	1.4 %
58Ni (KED)	1.457 ppb	2.7 %
59Co (KED)	0.114 ppb	1.7 %
63Cu (KED)	7.680 ppb	0.2 %
64Zn (KED)	48.106 ppb	1.3 %
69Ga (KED)	1.069 ppb	0.2 %
75As (KED)	0.121 ppb	6.3 %
80Se (KED)	-0.668 ppb	14.3 %
85Rb (KED)	1.336 ppb	2.1 %
88Sr (KED)	4.111 ppb	1.7 %
89Y (KED)	138.058 %	1.7 %
107Ag (KED)	0.568 ppb	1.4 %
114Cd (KED)	0.025 ppb	15.8 %
115In (KED)	132.302 %	1.7 %
133Cs (KED)	0.041 ppb	5.1 %
138Ba (KED)	3.737 ppb	0.8 %
139La (KED)	0.276 ppb	1.9 %
140Ce (KED)	0.690 ppb	2.0 %
141Pr (KED)	0.062 ppb	1.5 %
142Nd (KED)	0.388 ppb	1.0 %
152Sm (KED)	0.045 ppb	3.6 %
153Eu (KED)	0.007 ppb	11.4 %
158Gd (KED)	0.037 ppb	1.8 %
159Tb (KED)	139.125 %	0.9 %
164Dy (KED)	0.027 ppb	0.6 %
166Er (KED)	0.019 ppb	3.4 %
169Tm (KED)	0.001 ppb	17.2 %
174Yb (KED)	0.011 ppb	6.1 %
175Lu (KED)	-0.017 ppb	8.9 %
205Tl (KED)	0.003 ppb	7.4 %
208Pb (KED)	0.657 ppb	1.1 %
209Bi (KED)	131.653 %	0.5 %
232Th (KED)	-0.109 ppb	0.8 %
238U (KED)	0.015 ppb	4.1 %

Category	Concentration average	Intensity average	Intensity RSD
6Li (KED)	143.637 %	1,968 cps	2.0 %
9Be (KED)	0.007 ppb	3 cps	100.0 %
11B (KED)	-2.594 ppb	526 cps	9.1 %
24Mg (KED)	269.765 ppb	234,302 cps	1.2 %
27Al (KED)	255.860 ppb	58,440 cps	0.7 %

Category	Concentration average	Intensity average	Intensity RSD
45Sc (KED)	138.061 %	36,227 cps	1.4 %
51V (KED)	0.526 ppb	6,855 cps	12.9 %
52Cr (KED)	1.135 ppb	22,766 cps	2.5 %
55Mn (KED)	8.534 ppb	89,224 cps	1.0 %
56Fe (KED)	381.168 ppb	7,006,202 cps	2.7 %
58Ni (KED)	1.457 ppb	36,873 cps	1.9 %
59Co (KED)	0.114 ppb	4,515 cps	2.9 %
63Cu (KED)	7.680 ppb	223,320 cps	1.6 %
64Zn (KED)	48.106 ppb	462,759 cps	0.8 %
69Ga (KED)	1.069 ppb	11,224 cps	1.6 %
75As (KED)	0.121 ppb	336 cps	7.2 %
80Se (KED)	-0.668 ppb	1,987 cps	3.8 %
85Rb (KED)	1.336 ppb	12,922 cps	3.5 %
88Sr (KED)	4.111 ppb	56,643 cps	3.2 %
89Y (KED)	138.058 %	327,695 cps	1.7 %
107Ag (KED)	0.568 ppb	42,559 cps	1.6 %
114Cd (KED)	0.025 ppb	1,788 cps	8.3 %
115In (KED)	132.302 %	574,506 cps	1.7 %
133Cs (KED)	0.041 ppb	2,091 cps	4.0 %
138Ba (KED)	3.737 ppb	233,151 cps	1.2 %
139La (KED)	0.276 ppb	36,468 cps	1.1 %
140Ce (KED)	0.690 ppb	116,574 cps	2.4 %
141Pr (KED)	0.062 ppb	11,522 cps	0.6 %
142Nd (KED)	0.388 ppb	27,861 cps	0.8 %
152Sm (KED)	0.045 ppb	2,964 cps	2.5 %
153Eu (KED)	0.007 ppb	1,152 cps	9.3 %
158Gd (KED)	0.037 ppb	3,212 cps	0.8 %
159Tb (KED)	139.125 %	2,829,503 cps	0.9 %
164Dy (KED)	0.027 ppb	2,687 cps	1.1 %
166Er (KED)	0.019 ppb	2,471 cps	2.1 %
169Tm (KED)	0.001 ppb	694 cps	4.1 %
174Yb (KED)	0.011 ppb	1,623 cps	6.2 %
175Lu (KED)	-0.017 ppb	12,087 cps	3.0 %
205Tl (KED)	0.003 ppb	1,143 cps	5.4 %
208Pb (KED)	0.657 ppb	158,035 cps	1.1 %
209Bi (KED)	131.653 %	2,386,980 cps	0.5 %
232Th (KED)	-0.109 ppb	23,634 cps	1.5 %
238U (KED)	0.015 ppb	6,409 cps	3.9 %

Sample Summary

Instrument ID: iCAP Q

Analysis index: 16

Analysis name: 1481jian

Analysis started at: 10/12/2021 3:52:38 PM

User name: WINDOWS-UPCI4ER\Administrator

Category	Concentration average	Concentration RSD
6Li (KED)	118.655 %	4.5 %
9Be (KED)	0.010 ppb	162.3 %
11B (KED)	-0.047 ppb	410.3 %
24Mg (KED)	178.374 ppb	4.6 %
27Al (KED)	143.290 ppb	2.7 %
45Sc (KED)	121.468 %	1.1 %
51V (KED)	0.278 ppb	2.7 %
52Cr (KED)	1.091 ppb	0.8 %
55Mn (KED)	4.947 ppb	2.1 %
56Fe (KED)	165.993 ppb	0.4 %
58Ni (KED)	0.727 ppb	3.0 %
59Co (KED)	0.068 ppb	4.8 %
63Cu (KED)	5.234 ppb	1.6 %
64Zn (KED)	51.451 ppb	1.4 %
69Ga (KED)	0.614 ppb	3.5 %
75As (KED)	0.296 ppb	2.5 %
80Se (KED)	-0.337 ppb	23.7 %
85Rb (KED)	1.360 ppb	1.5 %
88Sr (KED)	2.529 ppb	0.9 %
89Y (KED)	117.688 %	0.7 %
107Ag (KED)	0.177 ppb	1.2 %
114Cd (KED)	-0.020 ppb	9.1 %
115In (KED)	114.957 %	0.8 %
133Cs (KED)	0.019 ppb	3.4 %
138Ba (KED)	2.038 ppb	2.2 %
139La (KED)	0.148 ppb	1.6 %
140Ce (KED)	0.417 ppb	1.3 %
141Pr (KED)	0.035 ppb	2.4 %
142Nd (KED)	0.231 ppb	1.8 %
152Sm (KED)	0.026 ppb	5.6 %
153Eu (KED)	0.003 ppb	22.9 %
158Gd (KED)	0.022 ppb	8.7 %
159Tb (KED)	120.425 %	0.6 %
164Dy (KED)	0.016 ppb	1.7 %
166Er (KED)	0.011 ppb	8.2 %
169Tm (KED)	0.000 ppb	11.0 %
174Yb (KED)	0.005 ppb	7.8 %
175Lu (KED)	-0.018 ppb	4.3 %
205Tl (KED)	0.002 ppb	9.8 %
208Pb (KED)	0.088 ppb	6.9 %
209Bi (KED)	113.848 %	0.9 %
232Th (KED)	-0.130 ppb	0.3 %
238U (KED)	0.011 ppb	6.5 %

Category	Concentration average	Intensity average	Intensity RSD
6Li (KED)	118.655 %	1,626 cps	4.5 %
9Be (KED)	0.010 ppb	3 cps	100.0 %
11B (KED)	-0.047 ppb	704 cps	3.2 %
24Mg (KED)	178.374 ppb	127,912 cps	0.9 %
27Al (KED)	143.290 ppb	28,871 cps	1.6 %

Category	Concentration average	Intensity average	Intensity RSD
45Sc (KED)	121.468 %	31,873 cps	1.1 %
51V (KED)	0.278 ppb	3,205 cps	2.4 %
52Cr (KED)	1.091 ppb	19,243 cps	1.3 %
55Mn (KED)	4.947 ppb	45,552 cps	1.4 %
56Fe (KED)	165.993 ppb	2,686,256 cps	0.8 %
58Ni (KED)	0.727 ppb	17,199 cps	1.8 %
59Co (KED)	0.068 ppb	2,432 cps	4.8 %
63Cu (KED)	5.234 ppb	130,103 cps	1.3 %
64Zn (KED)	51.451 ppb	421,734 cps	0.7 %
69Ga (KED)	0.614 ppb	5,558 cps	2.7 %
75As (KED)	0.296 ppb	684 cps	3.1 %
80Se (KED)	-0.337 ppb	1,957 cps	3.5 %
85Rb (KED)	1.360 ppb	11,213 cps	2.1 %
88Sr (KED)	2.529 ppb	29,799 cps	0.6 %
89Y (KED)	117.688 %	279,345 cps	0.7 %
107Ag (KED)	0.177 ppb	12,104 cps	1.7 %
114Cd (KED)	-0.020 ppb	369 cps	13.2 %
115In (KED)	114.957 %	499,188 cps	0.8 %
133Cs (KED)	0.019 ppb	962 cps	2.2 %
138Ba (KED)	2.038 ppb	111,068 cps	1.5 %
139La (KED)	0.148 ppb	17,122 cps	1.1 %
140Ce (KED)	0.417 ppb	61,230 cps	1.1 %
141Pr (KED)	0.035 ppb	5,774 cps	1.9 %
142Nd (KED)	0.231 ppb	14,454 cps	1.6 %
152Sm (KED)	0.026 ppb	1,535 cps	4.6 %
153Eu (KED)	0.003 ppb	570 cps	13.8 %
158Gd (KED)	0.022 ppb	1,732 cps	7.5 %
159Tb (KED)	120.425 %	2,449,186 cps	0.6 %
164Dy (KED)	0.016 ppb	1,446 cps	0.9 %
166Er (KED)	0.011 ppb	1,432 cps	6.7 %
169Tm (KED)	0.000 ppb	303 cps	4.0 %
174Yb (KED)	0.005 ppb	672 cps	5.6 %
175Lu (KED)	-0.018 ppb	10,222 cps	1.4 %
205Tl (KED)	0.002 ppb	682 cps	5.6 %
208Pb (KED)	0.088 ppb	51,669 cps	2.1 %
209Bi (KED)	113.848 %	2,064,160 cps	0.9 %
232Th (KED)	-0.130 ppb	13,934 cps	1.1 %
238U (KED)	0.011 ppb	4,111 cps	5.1 %

Sample Summary

Instrument ID: iCAP Q

Analysis index: 17

Analysis name: 81474jian

Analysis started at: 10/12/2021 3:56:28 PM

User name: WINDOWS-UPCI4ER\Administrator

Category	Concentration average	Concentration RSD
6Li (KED)	124.738 %	7.2 %
9Be (KED)	-0.006 ppb	0.0 %
11B (KED)	-0.603 ppb	41.3 %
24Mg (KED)	156.320 ppb	7.0 %
27Al (KED)	141.247 ppb	1.8 %
45Sc (KED)	117.401 %	2.3 %
51V (KED)	0.267 ppb	5.1 %
52Cr (KED)	0.618 ppb	0.5 %
55Mn (KED)	4.787 ppb	2.8 %
56Fe (KED)	169.122 ppb	2.7 %
58Ni (KED)	0.679 ppb	2.3 %
59Co (KED)	0.064 ppb	8.2 %
63Cu (KED)	8.311 ppb	2.6 %
64Zn (KED)	50.515 ppb	1.9 %
69Ga (KED)	0.661 ppb	3.8 %
75As (KED)	0.077 ppb	16.8 %
80Se (KED)	-0.264 ppb	47.6 %
85Rb (KED)	1.038 ppb	3.2 %
88Sr (KED)	2.305 ppb	1.3 %
89Y (KED)	116.571 %	0.7 %
107Ag (KED)	0.467 ppb	2.0 %
114Cd (KED)	-0.015 ppb	4.8 %
115In (KED)	112.349 %	0.4 %
133Cs (KED)	0.023 ppb	10.1 %
138Ba (KED)	2.294 ppb	0.2 %
139La (KED)	0.132 ppb	2.1 %
140Ce (KED)	0.479 ppb	2.6 %
141Pr (KED)	0.030 ppb	5.7 %
142Nd (KED)	0.261 ppb	13.8 %
152Sm (KED)	0.021 ppb	4.3 %
153Eu (KED)	0.003 ppb	5.7 %
158Gd (KED)	0.019 ppb	0.4 %
159Tb (KED)	117.268 %	1.5 %
164Dy (KED)	0.013 ppb	6.0 %
166Er (KED)	0.013 ppb	5.9 %
169Tm (KED)	0.000 ppb	16.0 %
174Yb (KED)	0.004 ppb	22.1 %
175Lu (KED)	-0.020 ppb	4.0 %
205Tl (KED)	0.002 ppb	9.5 %
208Pb (KED)	0.100 ppb	3.3 %
209Bi (KED)	113.270 %	0.5 %
232Th (KED)	-0.138 ppb	0.5 %
238U (KED)	0.009 ppb	1.6 %

Category	Concentration average	Intensity average	Intensity RSD
6Li (KED)	124.738 %	1,709 cps	7.2 %
9Be (KED)	-0.006 ppb	0 cps	
11B (KED)	-0.603 ppb	680 cps	11.2 %
24Mg (KED)	156.320 ppb	117,644 cps	0.4 %
27Al (KED)	141.247 ppb	27,507 cps	0.6 %

Category	Concentration average	Intensity average	Intensity RSD
45Sc (KED)	117.401 %	30,806 cps	2.3 %
51V (KED)	0.267 ppb	2,976 cps	5.6 %
52Cr (KED)	0.618 ppb	10,619 cps	2.8 %
55Mn (KED)	4.787 ppb	42,591 cps	1.1 %
56Fe (KED)	169.122 ppb	2,644,544 cps	2.0 %
58Ni (KED)	0.679 ppb	15,656 cps	0.4 %
59Co (KED)	0.064 ppb	2,237 cps	7.3 %
63Cu (KED)	8.311 ppb	203,956 cps	2.2 %
64Zn (KED)	50.515 ppb	410,192 cps	1.7 %
69Ga (KED)	0.661 ppb	5,915 cps	4.1 %
75As (KED)	0.077 ppb	184 cps	16.4 %
80Se (KED)	-0.264 ppb	1,995 cps	4.3 %
85Rb (KED)	1.038 ppb	8,487 cps	3.4 %
88Sr (KED)	2.305 ppb	26,930 cps	1.4 %
89Y (KED)	116.571 %	276,694 cps	0.7 %
107Ag (KED)	0.467 ppb	29,823 cps	1.5 %
114Cd (KED)	-0.015 ppb	473 cps	4.4 %
115In (KED)	112.349 %	487,861 cps	0.4 %
133Cs (KED)	0.023 ppb	1,092 cps	8.4 %
138Ba (KED)	2.294 ppb	121,456 cps	1.7 %
139La (KED)	0.132 ppb	14,887 cps	1.5 %
140Ce (KED)	0.479 ppb	68,349 cps	1.1 %
141Pr (KED)	0.030 ppb	4,923 cps	6.0 %
142Nd (KED)	0.261 ppb	15,871 cps	14.4 %
152Sm (KED)	0.021 ppb	1,225 cps	2.5 %
153Eu (KED)	0.003 ppb	518 cps	2.9 %
158Gd (KED)	0.019 ppb	1,416 cps	1.6 %
159Tb (KED)	117.268 %	2,384,984 cps	1.5 %
164Dy (KED)	0.013 ppb	1,160 cps	6.6 %
166Er (KED)	0.013 ppb	1,501 cps	5.4 %
169Tm (KED)	0.000 ppb	299 cps	6.1 %
174Yb (KED)	0.004 ppb	579 cps	15.2 %
175Lu (KED)	-0.020 ppb	9,583 cps	1.5 %
205Tl (KED)	0.002 ppb	637 cps	5.3 %
208Pb (KED)	0.100 ppb	53,222 cps	0.6 %
209Bi (KED)	113.270 %	2,053,692 cps	0.5 %
232Th (KED)	-0.138 ppb	11,635 cps	1.7 %
238U (KED)	0.009 ppb	3,499 cps	1.3 %

Sample Summary

Instrument ID: iCAP Q

Analysis index: 18

Analysis name: 2120jian

Analysis started at: 10/12/2021 4:00:32 PM

User name: WINDOWS-UPCI4ER\Administrator

Category	Concentration average	Concentration RSD
6Li (KED)	126.198 %	2.5 %
9Be (KED)	0.004 ppb	467.6 %
11B (KED)	1.125 ppb	22.0 %
24Mg (KED)	180.854 ppb	1.9 %
27Al (KED)	134.525 ppb	1.5 %
45Sc (KED)	123.077 %	1.3 %
51V (KED)	0.269 ppb	1.9 %
52Cr (KED)	0.724 ppb	1.1 %
55Mn (KED)	4.987 ppb	0.3 %
56Fe (KED)	161.646 ppb	1.5 %
58Ni (KED)	0.675 ppb	3.7 %
59Co (KED)	0.069 ppb	2.2 %
63Cu (KED)	10.055 ppb	1.4 %
64Zn (KED)	50.897 ppb	0.9 %
69Ga (KED)	0.677 ppb	1.9 %
75As (KED)	0.093 ppb	3.6 %
80Se (KED)	-0.270 ppb	33.9 %
85Rb (KED)	1.615 ppb	2.7 %
88Sr (KED)	2.595 ppb	1.3 %
89Y (KED)	119.960 %	0.9 %
107Ag (KED)	0.522 ppb	0.9 %
114Cd (KED)	-0.008 ppb	14.1 %
115In (KED)	116.669 %	1.3 %
133Cs (KED)	0.019 ppb	7.6 %
138Ba (KED)	2.347 ppb	1.2 %
139La (KED)	0.180 ppb	2.3 %
140Ce (KED)	0.761 ppb	3.2 %
141Pr (KED)	0.036 ppb	5.3 %
142Nd (KED)	0.338 ppb	2.1 %
152Sm (KED)	0.025 ppb	3.9 %
153Eu (KED)	0.003 ppb	3.6 %
158Gd (KED)	0.022 ppb	5.2 %
159Tb (KED)	121.180 %	2.4 %
164Dy (KED)	0.016 ppb	4.6 %
166Er (KED)	0.021 ppb	5.6 %
169Tm (KED)	0.000 ppb	32.9 %
174Yb (KED)	0.005 ppb	3.9 %
175Lu (KED)	-0.018 ppb	0.9 %
205Tl (KED)	0.002 ppb	12.3 %
208Pb (KED)	0.084 ppb	11.5 %
209Bi (KED)	114.730 %	0.9 %
232Th (KED)	-0.131 ppb	0.7 %
238U (KED)	0.010 ppb	3.1 %

Category	Concentration average	Intensity average	Intensity RSD
6Li (KED)	126.198 %	1,729 cps	2.5 %
9Be (KED)	0.004 ppb	2 cps	173.2 %
11B (KED)	1.125 ppb	882 cps	4.0 %
24Mg (KED)	180.854 ppb	138,075 cps	0.7 %
27Al (KED)	134.525 ppb	27,481 cps	2.1 %

Category	Concentration average	Intensity average	Intensity RSD
45Sc (KED)	123.077 %	32,295 cps	1.3 %
51V (KED)	0.269 ppb	3,142 cps	3.2 %
52Cr (KED)	0.724 ppb	13,003 cps	0.4 %
55Mn (KED)	4.987 ppb	46,533 cps	1.6 %
56Fe (KED)	161.646 ppb	2,650,488 cps	1.1 %
58Ni (KED)	0.675 ppb	16,342 cps	2.7 %
59Co (KED)	0.069 ppb	2,512 cps	1.1 %
63Cu (KED)	10.055 ppb	253,681 cps	0.7 %
64Zn (KED)	50.897 ppb	425,286 cps	0.1 %
69Ga (KED)	0.677 ppb	6,229 cps	1.6 %
75As (KED)	0.093 ppb	227 cps	2.9 %
80Se (KED)	-0.270 ppb	2,048 cps	3.5 %
85Rb (KED)	1.615 ppb	13,569 cps	2.2 %
88Sr (KED)	2.595 ppb	31,160 cps	0.4 %
89Y (KED)	119.960 %	284,738 cps	0.9 %
107Ag (KED)	0.522 ppb	34,529 cps	2.2 %
114Cd (KED)	-0.008 ppb	677 cps	5.5 %
115In (KED)	116.669 %	506,620 cps	1.3 %
133Cs (KED)	0.019 ppb	978 cps	6.0 %
138Ba (KED)	2.347 ppb	128,342 cps	1.2 %
139La (KED)	0.180 ppb	20,798 cps	0.4 %
140Ce (KED)	0.761 ppb	111,878 cps	1.0 %
141Pr (KED)	0.036 ppb	6,055 cps	2.7 %
142Nd (KED)	0.338 ppb	21,180 cps	0.4 %
152Sm (KED)	0.025 ppb	1,499 cps	1.5 %
153Eu (KED)	0.003 ppb	591 cps	1.6 %
158Gd (KED)	0.022 ppb	1,702 cps	3.9 %
159Tb (KED)	121.180 %	2,464,537 cps	2.4 %
164Dy (KED)	0.016 ppb	1,420 cps	5.1 %
166Er (KED)	0.021 ppb	2,400 cps	7.1 %
169Tm (KED)	0.000 ppb	353 cps	8.2 %
174Yb (KED)	0.005 ppb	750 cps	3.1 %
175Lu (KED)	-0.018 ppb	10,311 cps	2.6 %
205Tl (KED)	0.002 ppb	651 cps	6.4 %
208Pb (KED)	0.084 ppb	51,442 cps	1.9 %
209Bi (KED)	114.730 %	2,080,152 cps	0.9 %
232Th (KED)	-0.131 ppb	13,966 cps	2.0 %
238U (KED)	0.010 ppb	3,936 cps	3.3 %

Sample Summary

Instrument ID: iCAP Q

Analysis index: 19

Analysis name: 2266jian

Analysis started at: 10/12/2021 4:04:33 PM

User name: WINDOWS-UPCI4ER\Administrator

Category	Concentration average	Concentration RSD
6Li (KED)	139.338 %	5.8 %
9Be (KED)	0.011 ppb	134.9 %
11B (KED)	-1.933 ppb	23.1 %
24Mg (KED)	181.765 ppb	6.6 %
27Al (KED)	138.231 ppb	1.2 %
45Sc (KED)	132.791 %	0.3 %
51V (KED)	0.261 ppb	2.4 %
52Cr (KED)	0.773 ppb	1.0 %
55Mn (KED)	5.123 ppb	1.3 %
56Fe (KED)	161.168 ppb	1.7 %
58Ni (KED)	0.727 ppb	1.9 %
59Co (KED)	0.064 ppb	4.0 %
63Cu (KED)	4.682 ppb	0.7 %
64Zn (KED)	47.465 ppb	0.7 %
69Ga (KED)	0.658 ppb	3.4 %
75As (KED)	0.082 ppb	15.6 %
80Se (KED)	-0.459 ppb	28.5 %
85Rb (KED)	1.114 ppb	1.0 %
88Sr (KED)	2.718 ppb	2.0 %
89Y (KED)	130.698 %	1.0 %
107Ag (KED)	0.243 ppb	2.1 %
114Cd (KED)	-0.008 ppb	10.5 %
115In (KED)	126.523 %	1.0 %
133Cs (KED)	0.022 ppb	5.8 %
138Ba (KED)	2.246 ppb	3.0 %
139La (KED)	0.127 ppb	2.6 %
140Ce (KED)	0.503 ppb	1.4 %
141Pr (KED)	0.029 ppb	5.1 %
142Nd (KED)	0.243 ppb	2.9 %
152Sm (KED)	0.022 ppb	2.9 %
153Eu (KED)	0.003 ppb	20.7 %
158Gd (KED)	0.019 ppb	5.7 %
159Tb (KED)	133.016 %	2.7 %
164Dy (KED)	0.013 ppb	7.0 %
166Er (KED)	0.015 ppb	12.5 %
169Tm (KED)	0.000 ppb	8.0 %
174Yb (KED)	0.005 ppb	16.9 %
175Lu (KED)	-0.018 ppb	6.9 %
205Tl (KED)	0.002 ppb	9.8 %
208Pb (KED)	0.133 ppb	4.6 %
209Bi (KED)	123.737 %	2.1 %
232Th (KED)	-0.138 ppb	0.5 %
238U (KED)	0.009 ppb	4.1 %

Category	Concentration average	Intensity average	Intensity RSD
6Li (KED)	139.338 %	1,909 cps	5.8 %
9Be (KED)	0.011 ppb	4 cps	86.6 %
11B (KED)	-1.933 ppb	590 cps	3.7 %
24Mg (KED)	181.765 ppb	152,882 cps	1.4 %
27Al (KED)	138.231 ppb	30,460 cps	0.9 %

Category	Concentration average	Intensity average	Intensity RSD
45Sc (KED)	132.791 %	34,844 cps	0.3 %
51V (KED)	0.261 ppb	3,285 cps	2.0 %
52Cr (KED)	0.773 ppb	14,971 cps	1.1 %
55Mn (KED)	5.123 ppb	51,569 cps	1.6 %
56Fe (KED)	161.168 ppb	2,851,619 cps	2.0 %
58Ni (KED)	0.727 ppb	18,818 cps	1.8 %
59Co (KED)	0.064 ppb	2,536 cps	3.8 %
63Cu (KED)	4.682 ppb	129,395 cps	0.9 %
64Zn (KED)	47.465 ppb	432,335 cps	0.6 %
69Ga (KED)	0.658 ppb	6,601 cps	2.4 %
75As (KED)	0.082 ppb	221 cps	15.7 %
80Se (KED)	-0.459 ppb	2,066 cps	6.0 %
85Rb (KED)	1.114 ppb	10,204 cps	1.2 %
88Sr (KED)	2.718 ppb	35,544 cps	2.0 %
89Y (KED)	130.698 %	310,224 cps	1.0 %
107Ag (KED)	0.243 ppb	17,947 cps	2.2 %
114Cd (KED)	-0.008 ppb	757 cps	4.0 %
115In (KED)	126.523 %	549,411 cps	1.0 %
133Cs (KED)	0.022 ppb	1,153 cps	5.2 %
138Ba (KED)	2.246 ppb	134,907 cps	2.9 %
139La (KED)	0.127 ppb	16,265 cps	1.8 %
140Ce (KED)	0.503 ppb	81,457 cps	1.4 %
141Pr (KED)	0.029 ppb	5,479 cps	3.7 %
142Nd (KED)	0.243 ppb	16,790 cps	0.8 %
152Sm (KED)	0.022 ppb	1,439 cps	0.7 %
153Eu (KED)	0.003 ppb	594 cps	10.2 %
158Gd (KED)	0.019 ppb	1,626 cps	2.9 %
159Tb (KED)	133.016 %	2,705,257 cps	2.7 %
164Dy (KED)	0.013 ppb	1,325 cps	6.5 %
166Er (KED)	0.015 ppb	1,938 cps	11.1 %
169Tm (KED)	0.000 ppb	321 cps	5.3 %
174Yb (KED)	0.005 ppb	769 cps	13.5 %
175Lu (KED)	-0.018 ppb	11,252 cps	2.9 %
205Tl (KED)	0.002 ppb	787 cps	7.4 %
208Pb (KED)	0.133 ppb	63,459 cps	0.9 %
209Bi (KED)	123.737 %	2,243,471 cps	2.1 %
232Th (KED)	-0.138 ppb	12,799 cps	0.9 %
238U (KED)	0.009 ppb	3,805 cps	5.1 %

Sample Summary

Instrument ID: iCAP Q

Analysis index: 20

Analysis name: 3865jian

Analysis started at: 10/12/2021 4:08:34 PM

User name: WINDOWS-UPCI4ER\Administrator

Category	Concentration average	Concentration RSD
6Li (KED)	137.472 %	10.4 %
9Be (KED)	0.011 ppb	135.5 %
11B (KED)	-0.240 ppb	272.1 %
24Mg (KED)	222.985 ppb	10.9 %
27Al (KED)	211.048 ppb	1.1 %
45Sc (KED)	132.783 %	0.5 %
51V (KED)	0.393 ppb	4.8 %
52Cr (KED)	0.989 ppb	2.5 %
55Mn (KED)	7.092 ppb	0.8 %
56Fe (KED)	261.624 ppb	2.3 %
58Ni (KED)	1.088 ppb	1.9 %
59Co (KED)	0.101 ppb	2.8 %
63Cu (KED)	4.723 ppb	3.0 %
64Zn (KED)	45.179 ppb	2.9 %
69Ga (KED)	0.893 ppb	2.4 %
75As (KED)	0.114 ppb	12.4 %
80Se (KED)	-0.467 ppb	19.2 %
85Rb (KED)	1.069 ppb	4.3 %
88Sr (KED)	3.529 ppb	1.0 %
89Y (KED)	131.441 %	2.3 %
107Ag (KED)	0.287 ppb	3.2 %
114Cd (KED)	0.033 ppb	2.8 %
115In (KED)	126.600 %	0.8 %
133Cs (KED)	0.033 ppb	4.1 %
138Ba (KED)	3.148 ppb	2.1 %
139La (KED)	0.209 ppb	1.3 %
140Ce (KED)	0.760 ppb	0.5 %
141Pr (KED)	0.050 ppb	3.6 %
142Nd (KED)	0.380 ppb	4.1 %
152Sm (KED)	0.037 ppb	5.4 %
153Eu (KED)	0.005 ppb	3.8 %
158Gd (KED)	0.035 ppb	4.9 %
159Tb (KED)	132.147 %	1.3 %
164Dy (KED)	0.023 ppb	2.0 %
166Er (KED)	0.021 ppb	5.6 %
169Tm (KED)	0.000 ppb	30.0 %
174Yb (KED)	0.009 ppb	6.0 %
175Lu (KED)	-0.019 ppb	1.5 %
205Tl (KED)	0.003 ppb	4.8 %
208Pb (KED)	0.496 ppb	1.2 %
209Bi (KED)	125.065 %	0.5 %
232Th (KED)	-0.115 ppb	1.1 %
238U (KED)	0.014 ppb	2.3 %

Category	Concentration average	Intensity average	Intensity RSD
6Li (KED)	137.472 %	1,883 cps	10.4 %
9Be (KED)	0.011 ppb	4 cps	86.6 %
11B (KED)	-0.240 ppb	796 cps	18.3 %
24Mg (KED)	222.985 ppb	184,055 cps	0.7 %
27Al (KED)	211.048 ppb	46,399 cps	1.1 %

Category	Concentration average	Intensity average	Intensity RSD
45Sc (KED)	132.783 %	34,842 cps	0.5 %
51V (KED)	0.393 ppb	4,929 cps	4.4 %
52Cr (KED)	0.989 ppb	19,099 cps	2.2 %
55Mn (KED)	7.092 ppb	71,334 cps	0.6 %
56Fe (KED)	261.624 ppb	4,625,594 cps	2.0 %
58Ni (KED)	1.088 ppb	27,044 cps	1.4 %
59Co (KED)	0.101 ppb	3,867 cps	2.3 %
63Cu (KED)	4.723 ppb	131,202 cps	1.7 %
64Zn (KED)	45.179 ppb	413,848 cps	0.5 %
69Ga (KED)	0.893 ppb	8,951 cps	2.2 %
75As (KED)	0.114 ppb	303 cps	11.9 %
80Se (KED)	-0.467 ppb	2,069 cps	3.3 %
85Rb (KED)	1.069 ppb	9,844 cps	2.4 %
88Sr (KED)	3.529 ppb	46,333 cps	2.9 %
89Y (KED)	131.441 %	311,989 cps	2.3 %
107Ag (KED)	0.287 ppb	21,030 cps	2.3 %
114Cd (KED)	0.033 ppb	1,951 cps	1.7 %
115In (KED)	126.600 %	549,747 cps	0.8 %
133Cs (KED)	0.033 ppb	1,642 cps	4.3 %
138Ba (KED)	3.148 ppb	186,883 cps	0.9 %
139La (KED)	0.209 ppb	26,314 cps	1.3 %
140Ce (KED)	0.760 ppb	121,890 cps	1.7 %
141Pr (KED)	0.050 ppb	8,868 cps	2.6 %
142Nd (KED)	0.380 ppb	25,896 cps	2.9 %
152Sm (KED)	0.037 ppb	2,351 cps	4.8 %
153Eu (KED)	0.005 ppb	904 cps	3.1 %
158Gd (KED)	0.035 ppb	2,855 cps	4.2 %
159Tb (KED)	132.147 %	2,687,578 cps	1.3 %
164Dy (KED)	0.023 ppb	2,176 cps	0.5 %
166Er (KED)	0.021 ppb	2,545 cps	3.5 %
169Tm (KED)	0.000 ppb	560 cps	3.7 %
174Yb (KED)	0.009 ppb	1,219 cps	3.9 %
175Lu (KED)	-0.019 ppb	11,147 cps	1.7 %
205Tl (KED)	0.003 ppb	992 cps	3.6 %
208Pb (KED)	0.496 ppb	123,764 cps	1.0 %
209Bi (KED)	125.065 %	2,267,542 cps	0.5 %
232Th (KED)	-0.115 ppb	20,514 cps	2.4 %
238U (KED)	0.014 ppb	5,583 cps	1.9 %

Sample Summary

Instrument ID: iCAP Q

Analysis index: 21

Analysis name: 3873jian

Analysis started at: 10/12/2021 4:12:28 PM

User name: WINDOWS-UPCI4ER\Administrator

Category	Concentration average	Concentration RSD
6Li (KED)	142.664 %	2.6 %
9Be (KED)	-0.006 ppb	0.0 %
11B (KED)	-1.733 ppb	13.6 %
24Mg (KED)	93.130 ppb	2.5 %
27Al (KED)	78.255 ppb	0.9 %
45Sc (KED)	128.953 %	1.9 %
51V (KED)	0.149 ppb	10.4 %
52Cr (KED)	0.875 ppb	2.6 %
55Mn (KED)	2.939 ppb	2.5 %
56Fe (KED)	108.925 ppb	2.8 %
58Ni (KED)	0.483 ppb	1.4 %
59Co (KED)	0.035 ppb	5.6 %
63Cu (KED)	8.626 ppb	0.5 %
64Zn (KED)	51.784 ppb	1.1 %
69Ga (KED)	0.450 ppb	1.8 %
75As (KED)	0.066 ppb	20.0 %
80Se (KED)	-0.450 ppb	9.7 %
85Rb (KED)	0.714 ppb	4.5 %
88Sr (KED)	1.576 ppb	1.6 %
89Y (KED)	130.445 %	0.3 %
107Ag (KED)	0.443 ppb	0.8 %
114Cd (KED)	0.029 ppb	6.2 %
115In (KED)	127.684 %	1.6 %
133Cs (KED)	0.009 ppb	6.3 %
138Ba (KED)	1.618 ppb	1.0 %
139La (KED)	0.074 ppb	2.8 %
140Ce (KED)	0.408 ppb	1.3 %
141Pr (KED)	0.015 ppb	5.4 %
142Nd (KED)	0.175 ppb	0.2 %
152Sm (KED)	0.012 ppb	2.6 %
153Eu (KED)	0.001 ppb	60.3 %
158Gd (KED)	0.011 ppb	9.8 %
159Tb (KED)	131.847 %	1.6 %
164Dy (KED)	0.007 ppb	9.0 %
166Er (KED)	0.013 ppb	4.4 %
169Tm (KED)	-0.001 ppb	10.2 %
174Yb (KED)	0.002 ppb	12.4 %
175Lu (KED)	-0.020 ppb	10.6 %
205Tl (KED)	0.001 ppb	20.0 %
208Pb (KED)	0.626 ppb	0.5 %
209Bi (KED)	124.090 %	0.6 %
232Th (KED)	-0.156 ppb	0.4 %
238U (KED)	0.007 ppb	2.0 %

Category	Concentration average	Intensity average	Intensity RSD
6Li (KED)	142.664 %	1,955 cps	2.6 %
9Be (KED)	-0.006 ppb	0 cps	
11B (KED)	-1.733 ppb	632 cps	7.1 %
24Mg (KED)	93.130 ppb	80,526 cps	0.1 %
27Al (KED)	78.255 ppb	16,828 cps	1.1 %

Category	Concentration average	Intensity average	Intensity RSD
45Sc (KED)	128.953 %	33,837 cps	1.9 %
51V (KED)	0.149 ppb	1,840 cps	8.8 %
52Cr (KED)	0.875 ppb	16,433 cps	2.9 %
55Mn (KED)	2.939 ppb	28,778 cps	1.1 %
56Fe (KED)	108.925 ppb	1,872,193 cps	0.9 %
58Ni (KED)	0.483 ppb	12,866 cps	1.7 %
59Co (KED)	0.035 ppb	1,408 cps	3.0 %
63Cu (KED)	8.626 ppb	236,856 cps	0.8 %
64Zn (KED)	51.784 ppb	470,476 cps	0.9 %
69Ga (KED)	0.450 ppb	4,556 cps	2.0 %
75As (KED)	0.066 ppb	179 cps	18.8 %
80Se (KED)	-0.450 ppb	2,069 cps	1.9 %
85Rb (KED)	0.714 ppb	6,541 cps	4.1 %
88Sr (KED)	1.576 ppb	20,697 cps	1.3 %
89Y (KED)	130.445 %	309,625 cps	0.3 %
107Ag (KED)	0.443 ppb	32,225 cps	0.9 %
114Cd (KED)	0.029 ppb	1,855 cps	4.0 %
115In (KED)	127.684 %	554,455 cps	1.6 %
133Cs (KED)	0.009 ppb	609 cps	4.7 %
138Ba (KED)	1.618 ppb	96,992 cps	0.8 %
139La (KED)	0.074 ppb	9,530 cps	3.2 %
140Ce (KED)	0.408 ppb	65,500 cps	0.9 %
141Pr (KED)	0.015 ppb	3,013 cps	3.0 %
142Nd (KED)	0.175 ppb	12,002 cps	1.4 %
152Sm (KED)	0.012 ppb	838 cps	3.6 %
153Eu (KED)	0.001 ppb	326 cps	12.8 %
158Gd (KED)	0.011 ppb	1,004 cps	9.2 %
159Tb (KED)	131.847 %	2,681,488 cps	1.6 %
164Dy (KED)	0.007 ppb	813 cps	8.4 %
166Er (KED)	0.013 ppb	1,713 cps	4.8 %
169Tm (KED)	-0.001 ppb	212 cps	11.0 %
174Yb (KED)	0.002 ppb	446 cps	9.0 %
175Lu (KED)	-0.020 ppb	10,808 cps	2.8 %
205Tl (KED)	0.001 ppb	561 cps	7.4 %
208Pb (KED)	0.626 ppb	143,943 cps	0.4 %
209Bi (KED)	124.090 %	2,249,855 cps	0.6 %
232Th (KED)	-0.156 ppb	6,814 cps	3.9 %
238U (KED)	0.007 ppb	2,850 cps	2.1 %

Sample Summary

Instrument ID: iCAP Q

Analysis index: 22

Analysis name: 2104jian

Analysis started at: 10/12/2021 4:16:31 PM

User name: WINDOWS-UPCI4ER\Administrator

Category	Concentration average	Concentration RSD
6Li (KED)	143.069 %	1.5 %
9Be (KED)	-0.006 ppb	0.0 %
11B (KED)	23.737 ppb	4.1 %
24Mg (KED)	236.906 ppb	0.2 %
27Al (KED)	144.613 ppb	2.3 %
45Sc (KED)	137.836 %	1.2 %
51V (KED)	0.281 ppb	4.0 %
52Cr (KED)	0.728 ppb	2.5 %
55Mn (KED)	5.755 ppb	2.1 %
56Fe (KED)	172.364 ppb	0.9 %
58Ni (KED)	0.687 ppb	2.9 %
59Co (KED)	0.069 ppb	7.3 %
63Cu (KED)	37.370 ppb	2.3 %
64Zn (KED)	52.401 ppb	1.6 %
69Ga (KED)	0.798 ppb	3.1 %
75As (KED)	0.114 ppb	14.1 %
80Se (KED)	-0.680 ppb	2.3 %
85Rb (KED)	1.733 ppb	3.9 %
88Sr (KED)	3.185 ppb	2.4 %
89Y (KED)	135.222 %	0.7 %
107Ag (KED)	0.626 ppb	2.1 %
114Cd (KED)	-0.005 ppb	13.8 %
115In (KED)	129.226 %	1.6 %
133Cs (KED)	0.024 ppb	5.6 %
138Ba (KED)	2.804 ppb	1.8 %
139La (KED)	0.155 ppb	2.3 %
140Ce (KED)	1.082 ppb	3.1 %
141Pr (KED)	0.035 ppb	1.6 %
142Nd (KED)	0.439 ppb	2.3 %
152Sm (KED)	0.025 ppb	5.5 %
153Eu (KED)	0.003 ppb	8.0 %
158Gd (KED)	0.022 ppb	5.3 %
159Tb (KED)	135.312 %	1.7 %
164Dy (KED)	0.016 ppb	3.2 %
166Er (KED)	0.039 ppb	4.7 %
169Tm (KED)	0.000 ppb	48.5 %
174Yb (KED)	0.006 ppb	8.1 %
175Lu (KED)	-0.019 ppb	4.0 %
205Tl (KED)	0.002 ppb	8.4 %
208Pb (KED)	0.039 ppb	14.9 %
209Bi (KED)	127.255 %	0.8 %
232Th (KED)	-0.132 ppb	0.6 %
238U (KED)	0.012 ppb	3.2 %

Category	Concentration average	Intensity average	Intensity RSD
6Li (KED)	143.069 %	1,960 cps	1.5 %
9Be (KED)	-0.006 ppb	0 cps	
11B (KED)	23.737 ppb	3,903 cps	4.6 %
24Mg (KED)	236.906 ppb	205,018 cps	1.7 %
27Al (KED)	144.613 ppb	33,063 cps	1.1 %

Category	Concentration average	Intensity average	Intensity RSD
45Sc (KED)	137.836 %	36,168 cps	1.2 %
51V (KED)	0.281 ppb	3,669 cps	3.7 %
52Cr (KED)	0.728 ppb	14,635 cps	2.6 %
55Mn (KED)	5.755 ppb	60,106 cps	1.2 %
56Fe (KED)	172.364 ppb	3,164,967 cps	0.8 %
58Ni (KED)	0.687 ppb	18,578 cps	2.9 %
59Co (KED)	0.069 ppb	2,796 cps	6.1 %
63Cu (KED)	37.370 ppb	1,059,221 cps	1.6 %
64Zn (KED)	52.401 ppb	493,445 cps	0.9 %
69Ga (KED)	0.798 ppb	8,251 cps	2.5 %
75As (KED)	0.114 ppb	312 cps	14.2 %
80Se (KED)	-0.680 ppb	1,936 cps	1.3 %
85Rb (KED)	1.733 ppb	16,401 cps	3.3 %
88Sr (KED)	3.185 ppb	43,041 cps	2.0 %
89Y (KED)	135.222 %	320,964 cps	0.7 %
107Ag (KED)	0.626 ppb	45,696 cps	0.6 %
114Cd (KED)	-0.005 ppb	853 cps	3.1 %
115In (KED)	129.226 %	561,148 cps	1.6 %
133Cs (KED)	0.024 ppb	1,265 cps	3.4 %
138Ba (KED)	2.804 ppb	170,747 cps	2.0 %
139La (KED)	0.155 ppb	20,034 cps	0.7 %
140Ce (KED)	1.082 ppb	177,397 cps	3.8 %
141Pr (KED)	0.035 ppb	6,449 cps	3.0 %
142Nd (KED)	0.439 ppb	30,651 cps	1.8 %
152Sm (KED)	0.025 ppb	1,678 cps	4.9 %
153Eu (KED)	0.003 ppb	641 cps	3.9 %
158Gd (KED)	0.022 ppb	1,913 cps	3.9 %
159Tb (KED)	135.312 %	2,751,941 cps	1.7 %
164Dy (KED)	0.016 ppb	1,656 cps	3.0 %
166Er (KED)	0.039 ppb	4,573 cps	3.3 %
169Tm (KED)	0.000 ppb	392 cps	10.7 %
174Yb (KED)	0.006 ppb	894 cps	5.4 %
175Lu (KED)	-0.019 ppb	11,237 cps	2.9 %
205Tl (KED)	0.002 ppb	876 cps	5.6 %
208Pb (KED)	0.039 ppb	49,672 cps	1.9 %
209Bi (KED)	127.255 %	2,307,240 cps	0.8 %
232Th (KED)	-0.132 ppb	15,019 cps	2.1 %
238U (KED)	0.012 ppb	4,820 cps	2.2 %

Sample Summary

Instrument ID: iCAP Q

Analysis index: 23

Analysis name: 1486jian

Analysis started at: 10/12/2021 4:20:38 PM

User name: WINDOWS-UPCI4ER\Administrator

Category	Concentration average	Concentration RSD
6Li (KED)	131.146 %	2.4 %
9Be (KED)	0.008 ppb	4.4 %
11B (KED)	-1.296 ppb	2.3 %
24Mg (KED)	154.031 ppb	2.9 %
27Al (KED)	95.167 ppb	0.7 %
45Sc (KED)	129.021 %	0.6 %
51V (KED)	0.170 ppb	3.1 %
52Cr (KED)	0.680 ppb	2.8 %
55Mn (KED)	3.766 ppb	1.2 %
56Fe (KED)	114.331 ppb	1.0 %
58Ni (KED)	0.490 ppb	4.2 %
59Co (KED)	0.048 ppb	2.1 %
63Cu (KED)	6.714 ppb	1.4 %
64Zn (KED)	50.489 ppb	2.0 %
69Ga (KED)	0.541 ppb	2.4 %
75As (KED)	0.082 ppb	8.6 %
80Se (KED)	-0.292 ppb	39.2 %
85Rb (KED)	1.009 ppb	1.3 %
88Sr (KED)	2.131 ppb	2.4 %
89Y (KED)	124.390 %	1.2 %
107Ag (KED)	0.296 ppb	0.7 %
114Cd (KED)	-0.010 ppb	9.0 %
115In (KED)	119.090 %	0.9 %
133Cs (KED)	0.012 ppb	7.1 %
138Ba (KED)	1.854 ppb	0.4 %
139La (KED)	0.114 ppb	0.9 %
140Ce (KED)	0.738 ppb	7.2 %
141Pr (KED)	0.022 ppb	4.4 %
142Nd (KED)	0.295 ppb	2.0 %
152Sm (KED)	0.016 ppb	7.2 %
153Eu (KED)	0.001 ppb	30.6 %
158Gd (KED)	0.013 ppb	1.1 %
159Tb (KED)	124.803 %	0.7 %
164Dy (KED)	0.010 ppb	2.1 %
166Er (KED)	0.023 ppb	6.6 %
169Tm (KED)	-0.001 ppb	6.2 %
174Yb (KED)	0.003 ppb	14.4 %
175Lu (KED)	-0.020 ppb	6.6 %
205Tl (KED)	0.001 ppb	7.2 %
208Pb (KED)	0.019 ppb	24.9 %
209Bi (KED)	117.973 %	0.7 %
232Th (KED)	-0.150 ppb	0.1 %
238U (KED)	0.007 ppb	8.2 %

Category	Concentration average	Intensity average	Intensity RSD
6Li (KED)	131.146 %	1,797 cps	2.4 %
9Be (KED)	0.008 ppb	3 cps	0.0 %
11B (KED)	-1.296 ppb	632 cps	2.6 %
24Mg (KED)	154.031 ppb	122,235 cps	0.8 %
27Al (KED)	95.167 ppb	20,437 cps	1.3 %

Category	Concentration average	Intensity average	Intensity RSD
45Sc (KED)	129.021 %	33,855 cps	0.6 %
51V (KED)	0.170 ppb	2,101 cps	2.5 %
52Cr (KED)	0.680 ppb	12,805 cps	2.1 %
55Mn (KED)	3.766 ppb	36,870 cps	1.4 %
56Fe (KED)	114.331 ppb	1,966,554 cps	0.3 %
58Ni (KED)	0.490 ppb	13,037 cps	2.8 %
59Co (KED)	0.048 ppb	1,868 cps	1.9 %
63Cu (KED)	6.714 ppb	176,047 cps	0.9 %
64Zn (KED)	50.489 ppb	437,434 cps	0.9 %
69Ga (KED)	0.541 ppb	5,188 cps	1.7 %
75As (KED)	0.082 ppb	210 cps	8.4 %
80Se (KED)	-0.292 ppb	2,105 cps	3.4 %
85Rb (KED)	1.009 ppb	8,803 cps	0.6 %
88Sr (KED)	2.131 ppb	26,582 cps	1.4 %
89Y (KED)	124.390 %	295,253 cps	1.2 %
107Ag (KED)	0.296 ppb	20,358 cps	0.8 %
114Cd (KED)	-0.010 ppb	638 cps	3.4 %
115In (KED)	119.090 %	517,133 cps	0.9 %
133Cs (KED)	0.012 ppb	716 cps	4.5 %
138Ba (KED)	1.854 ppb	104,934 cps	1.1 %
139La (KED)	0.114 ppb	13,766 cps	0.2 %
140Ce (KED)	0.738 ppb	111,772 cps	7.9 %
141Pr (KED)	0.022 ppb	3,988 cps	3.2 %
142Nd (KED)	0.295 ppb	19,087 cps	1.8 %
152Sm (KED)	0.016 ppb	1,017 cps	6.7 %
153Eu (KED)	0.001 ppb	414 cps	11.8 %
158Gd (KED)	0.013 ppb	1,121 cps	0.5 %
159Tb (KED)	124.803 %	2,538,219 cps	0.7 %
164Dy (KED)	0.010 ppb	997 cps	2.3 %
166Er (KED)	0.023 ppb	2,599 cps	5.1 %
169Tm (KED)	-0.001 ppb	274 cps	4.3 %
174Yb (KED)	0.003 ppb	520 cps	10.7 %
175Lu (KED)	-0.020 ppb	10,292 cps	2.4 %
205Tl (KED)	0.001 ppb	626 cps	3.3 %
208Pb (KED)	0.019 ppb	42,860 cps	1.4 %
209Bi (KED)	117.973 %	2,138,964 cps	0.7 %
232Th (KED)	-0.150 ppb	8,347 cps	0.2 %
238U (KED)	0.007 ppb	2,866 cps	6.9 %

Sample Summary

Instrument ID: iCAP Q

Analysis index: 24

Analysis name: 1485jian

Analysis started at: 10/12/2021 4:24:25 PM

User name: WINDOWS-UPCI4ER\Administrator

Category	Concentration average	Concentration RSD
6Li (KED)	149.152 %	2.2 %
9Be (KED)	0.002 ppb	328.0 %
11B (KED)	-0.493 ppb	33.1 %
24Mg (KED)	164.064 ppb	1.8 %
27Al (KED)	121.874 ppb	1.5 %
45Sc (KED)	145.311 %	2.9 %
51V (KED)	0.227 ppb	6.9 %
52Cr (KED)	0.710 ppb	2.8 %
55Mn (KED)	4.717 ppb	0.5 %
56Fe (KED)	175.843 ppb	1.0 %
58Ni (KED)	0.681 ppb	4.4 %
59Co (KED)	0.057 ppb	4.7 %
63Cu (KED)	15.445 ppb	0.4 %
64Zn (KED)	57.242 ppb	0.4 %
69Ga (KED)	0.641 ppb	1.0 %
75As (KED)	0.084 ppb	10.4 %
80Se (KED)	-0.587 ppb	22.8 %
85Rb (KED)	0.886 ppb	1.3 %
88Sr (KED)	2.483 ppb	1.9 %
89Y (KED)	141.135 %	2.2 %
107Ag (KED)	1.118 ppb	0.9 %
114Cd (KED)	0.036 ppb	10.7 %
115In (KED)	136.179 %	3.0 %
133Cs (KED)	0.020 ppb	1.0 %
138Ba (KED)	2.195 ppb	2.1 %
139La (KED)	0.135 ppb	1.9 %
140Ce (KED)	0.688 ppb	0.5 %
141Pr (KED)	0.029 ppb	5.6 %
142Nd (KED)	0.297 ppb	1.6 %
152Sm (KED)	0.020 ppb	7.5 %
153Eu (KED)	0.002 ppb	4.6 %
158Gd (KED)	0.018 ppb	3.3 %
159Tb (KED)	143.179 %	2.2 %
164Dy (KED)	0.012 ppb	8.6 %
166Er (KED)	0.022 ppb	4.3 %
169Tm (KED)	-0.001 ppb	15.8 %
174Yb (KED)	0.004 ppb	5.0 %
175Lu (KED)	-0.021 ppb	5.8 %
205Tl (KED)	0.002 ppb	8.9 %
208Pb (KED)	0.731 ppb	3.1 %
209Bi (KED)	133.375 %	2.3 %
232Th (KED)	-0.140 ppb	0.4 %
238U (KED)	0.009 ppb	1.9 %

Category	Concentration average	Intensity average	Intensity RSD
6Li (KED)	149.152 %	2,044 cps	2.2 %
9Be (KED)	0.002 ppb	2 cps	86.6 %
11B (KED)	-0.493 ppb	827 cps	4.8 %
24Mg (KED)	164.064 ppb	148,108 cps	2.4 %
27Al (KED)	121.874 ppb	29,421 cps	4.2 %

Category	Concentration average	Intensity average	Intensity RSD
45Sc (KED)	145.311 %	38,129 cps	2.9 %
51V (KED)	0.227 ppb	3,130 cps	4.0 %
52Cr (KED)	0.710 ppb	15,057 cps	1.3 %
55Mn (KED)	4.717 ppb	51,961 cps	2.5 %
56Fe (KED)	175.843 ppb	3,404,337 cps	3.5 %
58Ni (KED)	0.681 ppb	19,426 cps	1.0 %
59Co (KED)	0.057 ppb	2,481 cps	3.6 %
63Cu (KED)	15.445 ppb	457,758 cps	2.1 %
64Zn (KED)	57.242 ppb	562,281 cps	1.9 %
69Ga (KED)	0.641 ppb	6,943 cps	3.1 %
75As (KED)	0.084 ppb	243 cps	11.0 %
80Se (KED)	-0.587 ppb	2,107 cps	3.8 %
85Rb (KED)	0.886 ppb	8,773 cps	0.9 %
88Sr (KED)	2.483 ppb	35,109 cps	4.1 %
89Y (KED)	141.135 %	334,998 cps	2.2 %
107Ag (KED)	1.118 ppb	85,241 cps	2.1 %
114Cd (KED)	0.036 ppb	2,205 cps	3.1 %
115In (KED)	136.179 %	591,342 cps	3.0 %
133Cs (KED)	0.020 ppb	1,156 cps	2.2 %
138Ba (KED)	2.195 ppb	142,000 cps	0.8 %
139La (KED)	0.135 ppb	18,530 cps	2.5 %
140Ce (KED)	0.688 ppb	119,588 cps	2.3 %
141Pr (KED)	0.029 ppb	5,901 cps	7.3 %
142Nd (KED)	0.297 ppb	22,028 cps	3.3 %
152Sm (KED)	0.020 ppb	1,457 cps	8.2 %
153Eu (KED)	0.002 ppb	563 cps	4.5 %
158Gd (KED)	0.018 ppb	1,706 cps	1.4 %
159Tb (KED)	143.179 %	2,911,951 cps	2.2 %
164Dy (KED)	0.012 ppb	1,303 cps	6.7 %
166Er (KED)	0.022 ppb	2,943 cps	5.7 %
169Tm (KED)	-0.001 ppb	320 cps	9.9 %
174Yb (KED)	0.004 ppb	723 cps	1.7 %
175Lu (KED)	-0.021 ppb	11,515 cps	4.7 %
205Tl (KED)	0.002 ppb	822 cps	3.0 %
208Pb (KED)	0.731 ppb	173,116 cps	1.4 %
209Bi (KED)	133.375 %	2,418,199 cps	2.3 %
232Th (KED)	-0.140 ppb	12,958 cps	0.8 %
238U (KED)	0.009 ppb	4,024 cps	3.8 %

Sample Summary

Instrument ID: iCAP Q

Analysis index: 25

Analysis name: 1372jian

Analysis started at: 10/12/2021 4:28:16 PM

User name: WINDOWS-UPCI4ER\Administrator

Category	Concentration average	Concentration RSD
6Li (KED)	141.934 %	5.2 %
9Be (KED)	-0.002 ppb	393.0 %
11B (KED)	-0.670 ppb	100.0 %
24Mg (KED)	199.284 ppb	5.5 %
27Al (KED)	168.821 ppb	0.9 %
45Sc (KED)	134.566 %	0.7 %
51V (KED)	0.326 ppb	2.4 %
52Cr (KED)	0.570 ppb	1.2 %
55Mn (KED)	5.813 ppb	1.0 %
56Fe (KED)	188.426 ppb	1.8 %
58Ni (KED)	0.791 ppb	2.8 %
59Co (KED)	0.075 ppb	4.4 %
63Cu (KED)	8.661 ppb	1.0 %
64Zn (KED)	47.130 ppb	1.9 %
69Ga (KED)	0.759 ppb	1.2 %
75As (KED)	0.104 ppb	21.3 %
80Se (KED)	-0.343 ppb	41.2 %
85Rb (KED)	1.360 ppb	3.8 %
88Sr (KED)	2.916 ppb	1.3 %
89Y (KED)	132.385 %	3.0 %
107Ag (KED)	0.359 ppb	3.2 %
114Cd (KED)	-0.004 ppb	35.1 %
115In (KED)	129.213 %	0.6 %
133Cs (KED)	0.025 ppb	11.1 %
138Ba (KED)	2.609 ppb	1.6 %
139La (KED)	0.171 ppb	4.1 %
140Ce (KED)	0.702 ppb	0.5 %
141Pr (KED)	0.040 ppb	2.4 %
142Nd (KED)	0.330 ppb	2.1 %
152Sm (KED)	0.029 ppb	2.8 %
153Eu (KED)	0.004 ppb	12.4 %
158Gd (KED)	0.025 ppb	5.5 %
159Tb (KED)	135.066 %	1.1 %
164Dy (KED)	0.018 ppb	5.2 %
166Er (KED)	0.017 ppb	2.1 %
169Tm (KED)	0.000 ppb	151.2 %
174Yb (KED)	0.007 ppb	3.0 %
175Lu (KED)	-0.020 ppb	4.1 %
205Tl (KED)	0.002 ppb	14.6 %
208Pb (KED)	0.053 ppb	7.8 %
209Bi (KED)	126.100 %	2.1 %
232Th (KED)	-0.124 ppb	0.6 %
238U (KED)	0.011 ppb	4.7 %

Category	Concentration average	Intensity average	Intensity RSD
6Li (KED)	141.934 %	1,945 cps	5.2 %
9Be (KED)	-0.002 ppb	1 cps	173.2 %
11B (KED)	-0.670 ppb	764 cps	13.6 %
24Mg (KED)	199.284 ppb	170,819 cps	0.9 %
27Al (KED)	168.821 ppb	37,656 cps	1.4 %

Category	Concentration average	Intensity average	Intensity RSD
45Sc (KED)	134.566 %	35,310 cps	0.7 %
51V (KED)	0.326 ppb	4,155 cps	1.6 %
52Cr (KED)	0.570 ppb	11,237 cps	1.8 %
55Mn (KED)	5.813 ppb	59,282 cps	0.6 %
56Fe (KED)	188.426 ppb	3,377,369 cps	1.2 %
58Ni (KED)	0.791 ppb	20,536 cps	1.8 %
59Co (KED)	0.075 ppb	2,947 cps	3.5 %
63Cu (KED)	8.661 ppb	241,305 cps	2.1 %
64Zn (KED)	47.130 ppb	434,702 cps	1.1 %
69Ga (KED)	0.759 ppb	7,686 cps	2.2 %
75As (KED)	0.104 ppb	277 cps	17.4 %
80Se (KED)	-0.343 ppb	2,194 cps	4.7 %
85Rb (KED)	1.360 ppb	12,603 cps	1.8 %
88Sr (KED)	2.916 ppb	38,605 cps	3.6 %
89Y (KED)	132.385 %	314,228 cps	3.0 %
107Ag (KED)	0.359 ppb	26,587 cps	3.5 %
114Cd (KED)	-0.004 ppb	893 cps	4.8 %
115In (KED)	129.213 %	561,091 cps	0.6 %
133Cs (KED)	0.025 ppb	1,319 cps	9.0 %
138Ba (KED)	2.609 ppb	158,793 cps	2.7 %
139La (KED)	0.171 ppb	22,057 cps	4.5 %
140Ce (KED)	0.702 ppb	115,050 cps	1.3 %
141Pr (KED)	0.040 ppb	7,407 cps	1.4 %
142Nd (KED)	0.330 ppb	23,065 cps	1.0 %
152Sm (KED)	0.029 ppb	1,889 cps	3.0 %
153Eu (KED)	0.004 ppb	799 cps	7.3 %
158Gd (KED)	0.025 ppb	2,186 cps	5.6 %
159Tb (KED)	135.066 %	2,746,955 cps	1.1 %
164Dy (KED)	0.018 ppb	1,762 cps	5.7 %
166Er (KED)	0.017 ppb	2,244 cps	2.3 %
169Tm (KED)	0.000 ppb	489 cps	2.1 %
174Yb (KED)	0.007 ppb	987 cps	2.1 %
175Lu (KED)	-0.020 ppb	10,985 cps	2.2 %
205Tl (KED)	0.002 ppb	752 cps	8.1 %
208Pb (KED)	0.053 ppb	51,427 cps	1.4 %
209Bi (KED)	126.100 %	2,286,309 cps	2.1 %
232Th (KED)	-0.124 ppb	17,517 cps	2.0 %
238U (KED)	0.011 ppb	4,434 cps	5.0 %

Sample Summary

Instrument ID: iCAP Q

Analysis index: 26

Analysis name: 81482jian

Analysis started at: 10/12/2021 4:32:01 PM

User name: WINDOWS-UPCI4ER\Administrator

Category	Concentration average	Concentration RSD
6Li (KED)	127.739 %	3.9 %
9Be (KED)	0.004 ppb	441.6 %
11B (KED)	6.240 ppb	14.2 %
24Mg (KED)	239.931 ppb	2.2 %
27Al (KED)	126.301 ppb	1.8 %
45Sc (KED)	122.767 %	0.4 %
51V (KED)	0.257 ppb	3.1 %
52Cr (KED)	1.009 ppb	0.6 %
55Mn (KED)	4.966 ppb	0.8 %
56Fe (KED)	145.982 ppb	1.0 %
58Ni (KED)	0.607 ppb	2.9 %
59Co (KED)	0.064 ppb	0.7 %
63Cu (KED)	5.405 ppb	2.4 %
64Zn (KED)	49.464 ppb	0.6 %
69Ga (KED)	0.647 ppb	1.1 %
75As (KED)	0.073 ppb	10.3 %
80Se (KED)	-0.015 ppb	676.4 %
85Rb (KED)	1.453 ppb	0.5 %
88Sr (KED)	2.694 ppb	0.5 %
89Y (KED)	118.992 %	0.8 %
107Ag (KED)	0.810 ppb	1.0 %
114Cd (KED)	0.029 ppb	12.7 %
115In (KED)	116.386 %	0.5 %
133Cs (KED)	0.017 ppb	7.7 %
138Ba (KED)	2.197 ppb	1.4 %
139La (KED)	0.110 ppb	1.3 %
140Ce (KED)	0.542 ppb	2.1 %
141Pr (KED)	0.026 ppb	0.9 %
142Nd (KED)	0.249 ppb	1.7 %
152Sm (KED)	0.019 ppb	5.3 %
153Eu (KED)	0.002 ppb	10.6 %
158Gd (KED)	0.017 ppb	5.2 %
159Tb (KED)	121.327 %	1.1 %
164Dy (KED)	0.012 ppb	11.3 %
166Er (KED)	0.015 ppb	2.2 %
169Tm (KED)	0.000 ppb	15.3 %
174Yb (KED)	0.004 ppb	13.5 %
175Lu (KED)	-0.020 ppb	6.2 %
205Tl (KED)	0.002 ppb	13.0 %
208Pb (KED)	0.359 ppb	1.6 %
209Bi (KED)	114.863 %	0.4 %
232Th (KED)	-0.143 ppb	0.5 %
238U (KED)	0.008 ppb	3.1 %

Category	Concentration average	Intensity average	Intensity RSD
6Li (KED)	127.739 %	1,750 cps	3.9 %
9Be (KED)	0.004 ppb	2 cps	173.2 %
11B (KED)	6.240 ppb	1,477 cps	3.7 %
24Mg (KED)	239.931 ppb	185,274 cps	1.7 %
27Al (KED)	126.301 ppb	25,747 cps	1.8 %

Category	Concentration average	Intensity average	Intensity RSD
45Sc (KED)	122.767 %	32,214 cps	0.4 %
51V (KED)	0.257 ppb	2,993 cps	3.2 %
52Cr (KED)	1.009 ppb	18,014 cps	0.7 %
55Mn (KED)	4.966 ppb	46,217 cps	1.0 %
56Fe (KED)	145.982 ppb	2,388,262 cps	1.2 %
58Ni (KED)	0.607 ppb	14,862 cps	2.9 %
59Co (KED)	0.064 ppb	2,336 cps	0.7 %
63Cu (KED)	5.405 ppb	135,814 cps	2.2 %
64Zn (KED)	49.464 ppb	410,081 cps	0.7 %
69Ga (KED)	0.647 ppb	5,913 cps	1.6 %
75As (KED)	0.073 ppb	179 cps	9.4 %
80Se (KED)	-0.015 ppb	2,236 cps	3.5 %
85Rb (KED)	1.453 ppb	12,109 cps	1.0 %
88Sr (KED)	2.694 ppb	32,080 cps	0.7 %
89Y (KED)	118.992 %	282,440 cps	0.8 %
107Ag (KED)	0.810 ppb	53,000 cps	1.4 %
114Cd (KED)	0.029 ppb	1,681 cps	5.9 %
115In (KED)	116.386 %	505,392 cps	0.5 %
133Cs (KED)	0.017 ppb	891 cps	6.0 %
138Ba (KED)	2.197 ppb	120,419 cps	0.9 %
139La (KED)	0.110 ppb	12,943 cps	2.2 %
140Ce (KED)	0.542 ppb	79,892 cps	1.1 %
141Pr (KED)	0.026 ppb	4,386 cps	0.2 %
142Nd (KED)	0.249 ppb	15,687 cps	1.2 %
152Sm (KED)	0.019 ppb	1,141 cps	3.9 %
153Eu (KED)	0.002 ppb	447 cps	5.9 %
158Gd (KED)	0.017 ppb	1,342 cps	3.9 %
159Tb (KED)	121.327 %	2,467,524 cps	1.1 %
164Dy (KED)	0.012 ppb	1,143 cps	10.1 %
166Er (KED)	0.015 ppb	1,832 cps	1.5 %
169Tm (KED)	0.000 ppb	283 cps	8.2 %
174Yb (KED)	0.004 ppb	648 cps	9.8 %
175Lu (KED)	-0.020 ppb	9,847 cps	3.2 %
205Tl (KED)	0.002 ppb	719 cps	7.7 %
208Pb (KED)	0.359 ppb	92,998 cps	0.5 %
209Bi (KED)	114.863 %	2,082,572 cps	0.4 %
232Th (KED)	-0.143 ppb	10,130 cps	2.6 %
238U (KED)	0.008 ppb	3,254 cps	2.3 %

Sample Summary

Instrument ID: iCAP Q

Analysis index: 27

Analysis name: 2013jian

Analysis started at: 10/12/2021 4:36:11 PM

User name: WINDOWS-UPCI4ER\Administrator

Category	Concentration average	Concentration RSD
6Li (KED)	142.826 %	4.7 %
9Be (KED)	0.012 ppb	133.0 %
11B (KED)	0.174 ppb	347.3 %
24Mg (KED)	154.838 ppb	5.6 %
27Al (KED)	100.282 ppb	1.3 %
45Sc (KED)	141.696 %	0.4 %
51V (KED)	0.186 ppb	1.0 %
52Cr (KED)	0.451 ppb	2.2 %
55Mn (KED)	4.406 ppb	1.0 %
56Fe (KED)	118.186 ppb	0.6 %
58Ni (KED)	0.570 ppb	3.3 %
59Co (KED)	0.046 ppb	5.3 %
63Cu (KED)	5.511 ppb	2.5 %
64Zn (KED)	46.660 ppb	2.0 %
69Ga (KED)	0.578 ppb	2.3 %
75As (KED)	0.077 ppb	5.5 %
80Se (KED)	-0.437 ppb	4.8 %
85Rb (KED)	1.031 ppb	0.5 %
88Sr (KED)	2.320 ppb	1.7 %
89Y (KED)	135.769 %	2.0 %
107Ag (KED)	0.196 ppb	1.6 %
114Cd (KED)	-0.013 ppb	11.1 %
115In (KED)	130.028 %	1.1 %
133Cs (KED)	0.015 ppb	11.2 %
138Ba (KED)	2.074 ppb	3.5 %
139La (KED)	0.107 ppb	4.3 %
140Ce (KED)	0.648 ppb	3.3 %
141Pr (KED)	0.024 ppb	5.2 %
142Nd (KED)	0.278 ppb	1.5 %
152Sm (KED)	0.016 ppb	6.5 %
153Eu (KED)	0.002 ppb	34.3 %
158Gd (KED)	0.014 ppb	2.4 %
159Tb (KED)	137.382 %	2.2 %
164Dy (KED)	0.010 ppb	8.8 %
166Er (KED)	0.023 ppb	6.2 %
169Tm (KED)	-0.001 ppb	8.5 %
174Yb (KED)	0.004 ppb	13.1 %
175Lu (KED)	-0.021 ppb	5.4 %
205Tl (KED)	0.002 ppb	12.6 %
208Pb (KED)	0.033 ppb	14.1 %
209Bi (KED)	130.142 %	1.0 %
232Th (KED)	-0.145 ppb	0.4 %
238U (KED)	0.009 ppb	4.2 %

Category	Concentration average	Intensity average	Intensity RSD
6Li (KED)	142.826 %	1,957 cps	4.7 %
9Be (KED)	0.012 ppb	4 cps	86.6 %
11B (KED)	0.174 ppb	874 cps	4.5 %
24Mg (KED)	154.838 ppb	133,644 cps	1.0 %
27Al (KED)	100.282 ppb	23,638 cps	0.9 %

Category	Concentration average	Intensity average	Intensity RSD
45Sc (KED)	141.696 %	37,181 cps	0.4 %
51V (KED)	0.186 ppb	2,516 cps	1.0 %
52Cr (KED)	0.451 ppb	9,406 cps	2.1 %
55Mn (KED)	4.406 ppb	47,349 cps	1.3 %
56Fe (KED)	118.186 ppb	2,232,549 cps	0.9 %
58Ni (KED)	0.570 ppb	16,258 cps	2.6 %
59Co (KED)	0.046 ppb	1,975 cps	4.5 %
63Cu (KED)	5.511 ppb	157,913 cps	0.5 %
64Zn (KED)	46.660 ppb	441,450 cps	0.3 %
69Ga (KED)	0.578 ppb	6,043 cps	2.2 %
75As (KED)	0.077 ppb	214 cps	4.7 %
80Se (KED)	-0.437 ppb	2,166 cps	1.5 %
85Rb (KED)	1.031 ppb	9,814 cps	2.4 %
88Sr (KED)	2.320 ppb	31,564 cps	2.1 %
89Y (KED)	135.769 %	322,260 cps	2.0 %
107Ag (KED)	0.196 ppb	15,048 cps	0.6 %
114Cd (KED)	-0.013 ppb	620 cps	8.0 %
115In (KED)	130.028 %	564,631 cps	1.1 %
133Cs (KED)	0.015 ppb	887 cps	8.5 %
138Ba (KED)	2.074 ppb	128,826 cps	1.2 %
139La (KED)	0.107 ppb	14,248 cps	1.9 %
140Ce (KED)	0.648 ppb	108,017 cps	2.0 %
141Pr (KED)	0.024 ppb	4,756 cps	3.4 %
142Nd (KED)	0.278 ppb	19,805 cps	0.9 %
152Sm (KED)	0.016 ppb	1,146 cps	6.7 %
153Eu (KED)	0.002 ppb	468 cps	14.5 %
158Gd (KED)	0.014 ppb	1,316 cps	4.1 %
159Tb (KED)	137.382 %	2,794,045 cps	2.2 %
164Dy (KED)	0.010 ppb	1,113 cps	5.1 %
166Er (KED)	0.023 ppb	2,925 cps	4.5 %
169Tm (KED)	-0.001 ppb	300 cps	4.8 %
174Yb (KED)	0.004 ppb	706 cps	12.1 %
175Lu (KED)	-0.021 ppb	11,030 cps	0.1 %
205Tl (KED)	0.002 ppb	739 cps	6.3 %
208Pb (KED)	0.033 ppb	49,718 cps	0.9 %
209Bi (KED)	130.142 %	2,359,588 cps	1.0 %
232Th (KED)	-0.145 ppb	10,847 cps	2.3 %
238U (KED)	0.009 ppb	3,926 cps	3.0 %

Sample Summary

Instrument ID: iCAP Q

Analysis index: 28

Analysis name: 2316jian

Analysis started at: 10/12/2021 4:39:57 PM

User name: WINDOWS-UPCI4ER\Administrator

Category	Concentration average	Concentration RSD
6Li (KED)	136.337 %	7.4 %
9Be (KED)	0.003 ppb	556.7 %
11B (KED)	-2.356 ppb	7.2 %
24Mg (KED)	116.197 ppb	9.0 %
27Al (KED)	108.791 ppb	2.8 %
45Sc (KED)	122.652 %	2.6 %
51V (KED)	0.192 ppb	2.8 %
52Cr (KED)	0.474 ppb	2.6 %
55Mn (KED)	4.358 ppb	1.5 %
56Fe (KED)	151.175 ppb	2.0 %
58Ni (KED)	0.593 ppb	1.4 %
59Co (KED)	0.055 ppb	6.0 %
63Cu (KED)	6.946 ppb	1.6 %
64Zn (KED)	49.345 ppb	1.7 %
69Ga (KED)	0.613 ppb	2.4 %
75As (KED)	0.068 ppb	23.1 %
80Se (KED)	-0.282 ppb	17.1 %
85Rb (KED)	0.756 ppb	1.2 %
88Sr (KED)	2.228 ppb	1.7 %
89Y (KED)	121.024 %	0.4 %
107Ag (KED)	0.446 ppb	0.9 %
114Cd (KED)	0.033 ppb	10.2 %
115In (KED)	117.928 %	0.8 %
133Cs (KED)	0.015 ppb	7.4 %
138Ba (KED)	2.090 ppb	0.6 %
139La (KED)	0.117 ppb	3.7 %
140Ce (KED)	0.633 ppb	2.3 %
141Pr (KED)	0.027 ppb	3.0 %
142Nd (KED)	0.272 ppb	2.4 %
152Sm (KED)	0.017 ppb	8.7 %
153Eu (KED)	0.002 ppb	22.6 %
158Gd (KED)	0.016 ppb	2.7 %
159Tb (KED)	123.226 %	1.0 %
164Dy (KED)	0.010 ppb	6.0 %
166Er (KED)	0.018 ppb	4.4 %
169Tm (KED)	-0.001 ppb	26.3 %
174Yb (KED)	0.004 ppb	11.2 %
175Lu (KED)	-0.021 ppb	2.3 %
205Tl (KED)	0.002 ppb	27.6 %
208Pb (KED)	0.396 ppb	2.8 %
209Bi (KED)	116.686 %	0.8 %
232Th (KED)	-0.145 ppb	0.2 %
238U (KED)	0.009 ppb	2.2 %

Category	Concentration average	Intensity average	Intensity RSD
6Li (KED)	136.337 %	1,868 cps	7.4 %
9Be (KED)	0.003 ppb	2 cps	173.2 %
11B (KED)	-2.356 ppb	528 cps	9.0 %
24Mg (KED)	116.197 ppb	95,559 cps	1.5 %
27Al (KED)	108.791 ppb	22,172 cps	0.7 %

Category	Concentration average	Intensity average	Intensity RSD
45Sc (KED)	122.652 %	32,184 cps	2.6 %
51V (KED)	0.192 ppb	2,240 cps	1.3 %
52Cr (KED)	0.474 ppb	8,535 cps	0.7 %
55Mn (KED)	4.358 ppb	40,531 cps	1.3 %
56Fe (KED)	151.175 ppb	2,469,890 cps	0.8 %
58Ni (KED)	0.593 ppb	14,552 cps	1.8 %
59Co (KED)	0.055 ppb	2,026 cps	3.8 %
63Cu (KED)	6.946 ppb	177,186 cps	1.7 %
64Zn (KED)	49.345 ppb	416,100 cps	1.9 %
69Ga (KED)	0.613 ppb	5,705 cps	2.1 %
75As (KED)	0.068 ppb	170 cps	21.2 %
80Se (KED)	-0.282 ppb	2,057 cps	2.3 %
85Rb (KED)	0.756 ppb	6,422 cps	1.4 %
88Sr (KED)	2.228 ppb	27,034 cps	1.9 %
89Y (KED)	121.024 %	287,264 cps	0.4 %
107Ag (KED)	0.446 ppb	29,976 cps	0.8 %
114Cd (KED)	0.033 ppb	1,823 cps	5.6 %
115In (KED)	117.928 %	512,089 cps	0.8 %
133Cs (KED)	0.015 ppb	826 cps	5.8 %
138Ba (KED)	2.090 ppb	116,453 cps	0.4 %
139La (KED)	0.117 ppb	13,921 cps	3.1 %
140Ce (KED)	0.633 ppb	94,708 cps	1.5 %
141Pr (KED)	0.027 ppb	4,633 cps	2.1 %
142Nd (KED)	0.272 ppb	17,369 cps	1.4 %
152Sm (KED)	0.017 ppb	1,067 cps	7.1 %
153Eu (KED)	0.002 ppb	484 cps	11.5 %
158Gd (KED)	0.016 ppb	1,266 cps	2.7 %
159Tb (KED)	123.226 %	2,506,149 cps	1.0 %
164Dy (KED)	0.010 ppb	1,018 cps	5.8 %
166Er (KED)	0.018 ppb	2,091 cps	4.6 %
169Tm (KED)	-0.001 ppb	256 cps	19.8 %
174Yb (KED)	0.004 ppb	557 cps	7.3 %
175Lu (KED)	-0.021 ppb	9,887 cps	0.5 %
205Tl (KED)	0.002 ppb	653 cps	13.4 %
208Pb (KED)	0.396 ppb	100,189 cps	1.6 %
209Bi (KED)	116.686 %	2,115,623 cps	0.8 %
232Th (KED)	-0.145 ppb	9,851 cps	0.5 %
238U (KED)	0.009 ppb	3,576 cps	2.4 %

Sample Summary

Instrument ID: iCAP Q

Analysis index: 29

Analysis name: 3491jian

Analysis started at: 10/12/2021 4:43:56 PM

User name: WINDOWS-UPCI4ER\Administrator

Category	Concentration average	Concentration RSD
6Li (KED)	124.495 %	3.9 %
9Be (KED)	-0.006 ppb	0.0 %
11B (KED)	3.719 ppb	5.1 %
24Mg (KED)	213.304 ppb	4.4 %
27Al (KED)	165.104 ppb	1.5 %
45Sc (KED)	123.281 %	1.4 %
51V (KED)	0.312 ppb	0.9 %
52Cr (KED)	0.774 ppb	2.4 %
55Mn (KED)	7.163 ppb	0.6 %
56Fe (KED)	231.646 ppb	1.2 %
58Ni (KED)	0.977 ppb	2.3 %
59Co (KED)	0.075 ppb	1.0 %
63Cu (KED)	8.513 ppb	0.6 %
64Zn (KED)	49.044 ppb	0.7 %
69Ga (KED)	0.863 ppb	1.2 %
75As (KED)	0.103 ppb	5.2 %
80Se (KED)	-0.268 ppb	59.2 %
85Rb (KED)	1.305 ppb	1.9 %
88Sr (KED)	3.512 ppb	1.9 %
89Y (KED)	120.144 %	0.6 %
107Ag (KED)	0.458 ppb	1.4 %
114Cd (KED)	0.020 ppb	15.6 %
115In (KED)	117.624 %	0.8 %
133Cs (KED)	0.028 ppb	3.7 %
138Ba (KED)	2.976 ppb	2.1 %
139La (KED)	0.174 ppb	1.7 %
140Ce (KED)	1.092 ppb	2.0 %
141Pr (KED)	0.040 ppb	4.3 %
142Nd (KED)	0.450 ppb	2.8 %
152Sm (KED)	0.026 ppb	3.7 %
153Eu (KED)	0.003 ppb	3.9 %
158Gd (KED)	0.024 ppb	3.6 %
159Tb (KED)	123.315 %	1.5 %
164Dy (KED)	0.018 ppb	4.4 %
166Er (KED)	0.032 ppb	0.6 %
169Tm (KED)	0.000 ppb	73.3 %
174Yb (KED)	0.006 ppb	0.9 %
175Lu (KED)	-0.019 ppb	11.5 %
205Tl (KED)	0.002 ppb	7.5 %
208Pb (KED)	0.493 ppb	2.8 %
209Bi (KED)	115.685 %	0.4 %
232Th (KED)	-0.125 ppb	0.9 %
238U (KED)	0.014 ppb	2.8 %

Category	Concentration average	Intensity average	Intensity RSD
6Li (KED)	124.495 %	1,706 cps	3.9 %
9Be (KED)	-0.006 ppb	0 cps	
11B (KED)	3.719 ppb	1,160 cps	4.3 %
24Mg (KED)	213.304 ppb	160,469 cps	0.5 %
27Al (KED)	165.104 ppb	33,737 cps	0.3 %

Category	Concentration average	Intensity average	Intensity RSD
45Sc (KED)	123.281 %	32,349 cps	1.4 %
51V (KED)	0.312 ppb	3,644 cps	1.1 %
52Cr (KED)	0.774 ppb	13,906 cps	2.1 %
55Mn (KED)	7.163 ppb	66,894 cps	1.0 %
56Fe (KED)	231.646 ppb	3,802,749 cps	0.3 %
58Ni (KED)	0.977 ppb	22,752 cps	1.1 %
59Co (KED)	0.075 ppb	2,706 cps	0.6 %
63Cu (KED)	8.513 ppb	215,298 cps	0.8 %
64Zn (KED)	49.044 ppb	410,563 cps	0.9 %
69Ga (KED)	0.863 ppb	7,913 cps	1.1 %
75As (KED)	0.103 ppb	251 cps	5.4 %
80Se (KED)	-0.268 ppb	2,052 cps	5.7 %
85Rb (KED)	1.305 ppb	10,982 cps	1.9 %
88Sr (KED)	3.512 ppb	42,150 cps	1.6 %
89Y (KED)	120.144 %	285,174 cps	0.6 %
107Ag (KED)	0.458 ppb	30,653 cps	2.1 %
114Cd (KED)	0.020 ppb	1,463 cps	5.4 %
115In (KED)	117.624 %	510,767 cps	0.8 %
133Cs (KED)	0.028 ppb	1,309 cps	2.9 %
138Ba (KED)	2.976 ppb	164,969 cps	1.3 %
139La (KED)	0.174 ppb	20,482 cps	0.7 %
140Ce (KED)	1.092 ppb	163,105 cps	0.5 %
141Pr (KED)	0.040 ppb	6,749 cps	2.6 %
142Nd (KED)	0.450 ppb	28,636 cps	1.8 %
152Sm (KED)	0.026 ppb	1,602 cps	3.7 %
153Eu (KED)	0.003 ppb	639 cps	3.1 %
158Gd (KED)	0.024 ppb	1,896 cps	2.1 %
159Tb (KED)	123.315 %	2,507,962 cps	1.5 %
164Dy (KED)	0.018 ppb	1,600 cps	4.2 %
166Er (KED)	0.032 ppb	3,513 cps	1.0 %
169Tm (KED)	0.000 ppb	387 cps	10.5 %
174Yb (KED)	0.006 ppb	816 cps	1.7 %
175Lu (KED)	-0.019 ppb	10,279 cps	3.6 %
205Tl (KED)	0.002 ppb	841 cps	4.2 %
208Pb (KED)	0.493 ppb	114,025 cps	1.9 %
209Bi (KED)	115.685 %	2,097,466 cps	0.4 %
232Th (KED)	-0.125 ppb	15,699 cps	1.8 %
238U (KED)	0.014 ppb	5,126 cps	2.3 %